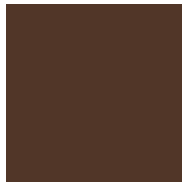




THE WOODLAND ALMANAC



www.woodlot.bc.ca

Winter 2015

IN THIS ISSUE

- 3 GENERAL MANAGER'S REPORT
- 4 PRESIDENT'S REPORT
- 5 INTERIOR TIMBER PRICING
- 6 COASTAL TIMBER PRICING
- 8 SCHOLARSHIP AWARD APPLICATION
- 10 SPOTLIGHT ON SAFETY
- 12 AGM HIGHLIGHTS:
FBCWA RESOLUTIONS
- 12 AGM SPONSORS
- 12 AGM HIGHLIGHTS:
WELCOME NEW DIRECTORS
- 13 AGM EDUCATIONAL PANEL SPEECH
- 14 FBCWA PRIORITIES
- 15 LIFETIME MEMBER: SHAWN FLYNN
- 15 WINTER WORKSHOP
- 16 TREE SEED FOR REFORESTATION
- 17 MY TWO CENTS WORTH
- 18 GOVERNMENT NOTICE BOARD
- 19 CONTRACTOR'S CORNER
- 19 R&D PROJECT FUNDING AVAILABLE
- 20 THANK YOU TO OUR CONTRIBUTORS

Education the Focus at Woodlot AGM

by Sara Grady

When BC's woodlotters gather for their Annual General Meeting each fall, the intention is always to exchange ideas, learn from successes (and failures), and improve small-scale forestry practices across the province.

This year's AGM, hosted jointly by the Shuswap/Okanagan and Boundary Woodlot Associations in West Kelowna, put an even greater emphasis on the educational component. In addition to several informative field tours highlighting issues specific to the region, education was the prevailing theme of both the Stewardship Awards and a highly successful panel discussion.

West Kelowna Mayor Doug Findlater and Westbank First Nations Councillor Brian Eli extended their warm welcome to the crowd of 100+ woodlotters, who were then shown the Woodlot Stewardship video, Education Legacies.



Educational panel speakers (L to R): Al Kolkind, Martin Tooms, Michelle Britch and Jordan Benner share their experiences on woodlot education

The video threw a spotlight on a broad cross-section of educational pursuits happening on woodlots around the province, from elementary school fieldtrips and youth summer

camps, to high school trades programs and post-secondary research and work experience.

A special honour was given to one of the Federation's greatest education champions. Shawn Flynn was named a Lifetime Member in recognition of his work at The School of Commonsense, a one-of-a-kind classroom built by students for students on Woodlot License 1479 in Port Alberni. Flynn and educator Ryan Dvorak have blended a Ministry-approved curriculum with project-based, hands-on learning for high school students who don't thrive in a traditional classroom setting.

Woodlotters took a break from the boardroom to visit family-owned Gorman

cont'd on page 7 ...



www.woodlot.bc.ca

FEDERATION OF BC WOODLOT ASSOCIATIONS

Contact: Brian McNaughton, General Manager • 381 Pheasant Rd., Williams Lake, BC, V2G 5A9

Tel: (250) 398-7646 • Toll-free: 1-866-345-8733 • E-mail: gen_manager@woodlot.bc.ca • www.woodlot.bc.ca

FBCWA EXECUTIVE

President.....	Mark Clark, Prince George.....	markclarkprf@shaw.ca
Vice President.....	Miles Fuller, Burns Lake.....	mdfuller75@gmail.com
Treasurer.....	Nancy Pezel, Qualicum Beach.....	islandswest@shaw.ca
Secretary.....	Lisa Marak, Kelowna.....	Imarak@telus.net
Director.....	Brian Amies, Golden.....	bdamies@gmail.com
Director.....	Jeff Beale, Fort St. John.....	jbeale@telus.net
Director.....	Jordan Benner, Quadra Island.....	jordan_benner@hotmail.com
Director.....	Tom Bradley, Winlaw.....	tomb@netidea.com
Director.....	George Delisle, Westbridge.....	littledipperhideaway@gmail.com
Director.....	Ainslie Jackman, Valemount.....	jackman@valemount.com
Director.....	Jon Seinen, Houston.....	jonseinen@hotmail.com

FBCWA CONTRACTORS

General Manager.....	Brian McNaughton..	lone_tree@telus.net ... Tf: 1-866-345-8733
Timber Pricing (Stumpage) Coast...	Ed Hughes.....	ed@woodlot.bc.ca 778-424-6129
Timber Pricing (Stumpage) Interior.	Debbie Zandbelt.....	debbie@woodlot.bc.ca 250-549-3089
Admin Support & Communications .	Lisa Marak.....	Imarak@telus.net 250-765-6156
E-Business.....	Tom Bradley.....	tomb@netidea.com 250-226-7792
Bookkeeper.....	Heidi Denney.....	citizencane@shaw.ca 250-248-2633
Woodlot for Windows.....	Mike Bandstra.....	mbandstra@forsite.ca 250-847-4822

FBCWA COMMITTEE HEADS

Timber Pricing.....	Miles Fuller.....	mdfuller75@gmail.com 250-692-6578
National & External Affairs.....	Brent Petrick.....	smoky1458@shaw.ca 250-365-9742
Strategic Planning.....	Lisa Marak.....	Imarak@telus.net 250-765-6156
Tenure Rights.....	Fred Newhouse.....	efred.fn@gmail.com 250-308-7677

WPDC EXECUTIVE

President.....	John Massier, Quesnel.....	jmassier@xplornet.com
Vice President.....	Blain Arnett, Prince George.....	greggcreek@shaw.ca
Treasurer.....	Alison Patch, Burns Lake.....	agpatch100@gmail.com
Director, Coast.....	Jerry Benner, Quadra Island.....	jerry@bennerforestry.ca
Director, South.....	Rod Blake, Williams Lake.....	srblake@thelake.ca
Director, North.....	Dean Daly, Smithers.....	deanrdaly@gmail.com
Director, Peace.....	Chris Hawkins, Yukon.....	chawkins@yukoncollege.yk.ca

WPDC PORTFOLIOS

Almanac, AR & Calendar: Rod Blake & Chris Hawkins; AGM & Stewardship Video: John Massier; Contract Management: John Massier & Blain Arnett; FBCWA Liaison: John Massier (Blain Arnett); Financial Management: Alison Patch; Fund Management Liaison: Jerry Benner; Nominations/Succession: Blain Arnett; R & D Project Proposals: Jerry Benner, Dean Daly & Chris Hawkins; Questionnaire: Alison Patch & Dean Daly; Resolutions: Alison Patch; Website: Rod Blake & Blain Arnett

WOODLOT PRODUCT DEVELOPMENT COUNCIL • THE WOODLAND ALMANAC

Coordinator: Cathy McClary • Tel: (250) 961-0271 • PO Box 23011, Plaza 33 Postal Outlet, Kelowna, BC V1X 7K7
E-mail: cjmclclary401@gmail.com • Publication # 40035578

FBCWA DIRECTORS

Boundary:.....	G. Delisle
Bulkley:.....	C. Schippers
Cariboo:.....	I. Lanki
Clearwater:.....	W. MacLennan
Columbia:.....	B. Amies
East Kootenay:.....	T. Quirk
Fort St. James Rep.:.....	S. Harrison
Fraser Valley:.....	R. Biller
Kamloops & District:.....	N. Fennell
Kispiox:.....	B. Larson
Lillooet:.....	Vacant
Mackenzie:.....	B. Sinclair
Nadina District:.....	S. Wright
North Island:.....	J. Benner
Peace River:.....	J. Beale
Prince George:.....	B. Arnett
Quesnel:.....	A. Waters
Robson Canoe:.....	N. Lorenz
Sea to Sky:.....	W. Tewinkel
Shuswap/Okanagan:.....	F. Newhouse
South Cariboo:.....	G. Zemanek
South Island:.....	J. Gregson
Stuart/Nechako:.....	P. Vahi
West Kootenay:.....	T. Bradley

FBCWA JOINT WORKING GROUP

Mark Clark
Cliff Manning
Tom Bradley
Coleen Marlow
Brian McNaughton

[facebook](https://www.facebook.com/woodlotsbc)

www.facebook.com/woodlotsbc

Stewardship and Getting RESULTS

by Brian McNaughton

The Federation directors added two very important topics to the Federation's priority list during their meeting on October 4th – Stewardship & Stabilizing the Timber Harvesting Land Base and Getting RESULTS.

Diane Nicholls, Chief Forester introduced a project dealing with stewardship and stabilizing the timber harvesting land base (THLB). It was motivated by recognition that the impacts from the mountain pine beetle infestation, demands from other resource-based industries, and the need to designate habitat for species at risk are affecting the amount of land available for timber harvesting. Under FRPA and the WLPPR, there are a variety of tools that WLs can apply to provide good stewardship while minimizing impacts and stabilizing the THLB. These include re-designing reserves (e.g. wildlife tree patches), employing alternative silviculture systems and harvesting techniques; scheduling and timing operations to lessen or mitigate potential impacts, capitalizing on the small scale nature of WL operations, and constraining management and/or operations over designated areas. The Federation intends to work with one or two woodlot licensees to assess the



Brian McNaughton,
General Manager

extent and impact of downward pressures on their Schedule B land and to develop options and alternatives that would minimize or mitigate the impacts. It will be a pilot

project using a practical approach that involves gathering enough information to assess whether or not this project has the potential to be successful. Licensee knowledge and common sense, rather than costly and time consuming data collection and analyses, will be the basis for developing a short report and submitting preliminary findings to FLNR. This approach will allow the Federation to assess the likelihood of success and determine if investing more time and money into this project will be worthwhile.

The other priority is Getting RESULTS. This is a collaborative project between the Federation and FLNR to assist district staff and woodlot licensees to address deficiencies in WL RESULTS reporting. Details are still being worked on, but the basic plan to supply a report showing what

reporting shortcoming(s), if any, exist for a WL. A document that describes how to fix those shortcomings will also be provided. The hope is that woodlot licensees and district staff will utilize this information to address shortcomings in WL RESULTS reporting. You will be hearing more about this project in the next few weeks.

Best wishes to you and yours for a very Merry Christmas and a Happy New Year!

~Brian ♦

Purpose of the WPDC

The primary purpose of the WPDC is to ensure that levy fees are spent on woodlot licensee priorities to benefit and promote the woodlot industry throughout BC. Funds are collected through powers granted to Council under the Farming and Fishing Industries Development Act. ♦

Please note:

The opinions expressed in the Almanac do not necessarily reflect those of the Federation, the Council, or their members.

FBCWA Vision

Woodlot holders/owners will participate in a healthy and diverse forest industry with woodlot licenses and private forest lands, making significant contributions to local communities and providing a sustainable supply of forest products. The FBCWA will have a voice in forest and economic policy. BC's woodlots will be models of forest management excellence, and world-renowned for their social, economic, recreational, cultural, and educational contributions to rural communities. ♦



Cheers to Volunteers

by Mark Clark

I hope this issue of the Almanac finds you all enjoying a peaceful Christmas and New Year season. Your Federation has some new and some "not so new" faces joining the volunteers who work on your behalf.

- Ainslie Jackman (Robson Canoe WL Assn) was elected to the Executive Committee at the Annual General Meeting.
- Brent Petrick (West Kootenay WL Assn), a past FBCWA President, has agreed to chair the National/International Affairs Committee; which includes representing the FBCWA on the Canadian Federation of Woodlot Owners. Brent is taking over from Cliff Manning (Nadina WL Assn) who has stepped down.
- Rick Walters (Cariboo WL Assn) is the Federation's new representative of the Safety Committee. Rick joins Gary Hanson and Mark Churchill, and replacing Shawn Flynn who recently sold to his partner his share of their woodlot licence. Rick comes with a strong safety background, having worked recently for the BC Forest Safety Council.

Many thanks to Cliff and Shawn who have served the Federation so well. Cliff has been the President, past President and chair of the National/International Committee for many years. He plans to stay involved as a participant on the WL Joint Working Group.

In addition to being a member of the Safety Committee, Shawn represented the Federation on the Board of Directors for the BC Forest Safety Council for many years, served on Federation's executive committee, and was FBCWA Vice President. He also was on the Woodlot Product Development Council for a number



Mark Clark
President

of terms. For all his contributions, Shawn was recognized this year and was made a Life Member of the Federation!

There were some changes on the Woodlot Product Development Council as well. A large and

heartfelt thank you goes out to Jim Collins (Peace WL Assn) who stepped down and has been replaced by Chris Hawkins. John Massier (Quesnel WL Assn) and Dean Daly (Bulkley WL Assn) were both elected to Council for two-year terms. I'm sure most will remember Dean as the stumpage guru extraordinaire from a few years back. John was a long time member of the Federation Executive who moved over to Council last year.

On behalf of the Federation, thank you to those who are stepping away and welcome to all the new people. I'm looking forward to working with you.

2016-17 is setting up to be a very

busy year for the Federation as it continues to improve and promote BC's Woodlot Program. At the Annual General Meeting in October, the directors reviewed and approved the Federation's priorities for the upcoming years (see page 14). Initiatives that streamline administration and improve forest management remained in the forefront. A table of Federation priorities can be found in this edition of the Woodland Almanac.

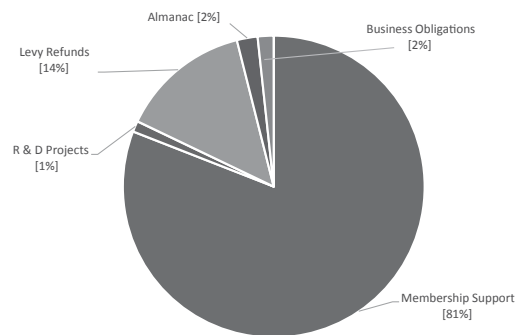
In the next few months, your Executive will be working closely with the Woodlot Product Development Council to come up with a work plan and budget to deliver on those priorities. I would encourage all licensees to complete the questionnaire that's included with this Almanac. Your feedback via the questionnaire influences the Federation's priorities and helps ensure that we continue to do work that is in your best interests.

Please live and travel safely this holiday season. See you in the New Year. ♦

4

Where your \$0.25 annual levy goes

The Woodlot Product Development Council has a responsibility to ensure funding originating from the woodlot levy is prudently managed and used only for work and activities consistent with the Purpose of the Council which are to: Promote a positive image of the woodlot industry and its products; educate the general public and buyers about the benefits of BC woodlots and small-scale forest management and initiate and support research programs for the development and enhancement of the woodlot industry in the province. The pie chart shows a breakdown of where the levy is used. ♦



Timber Economics and Real-life

by Debbie Zandbelt, RPF

Interior Timber Pricing has never been a boring place to hang your hat – always interesting how timber economics and real life co-exist in forestry. Technology is changing BC forestry economics on a daily basis – data collection being more digitally available - comments below on new data coming from Logging Truck “black boxes”.

Flat fee for Waste surveys – proposal to the Ministry of Forests

The provincial government as part of the provincial Forestry Forum on Fibre utilization is still on track to update the provincial waste benchmarks. The initiative is aimed to support integrated harvesting on one site (utilization and tenure opportunities by more than one licensee in one harvest area) and improving waste measurements. This is targeted to better reconcile inventory and AAC with the possibility of measuring grade 4 in the interior. In the mean time please note the current waste benchmarks have been extended to October 1, 2017 effective September 17, 2015.

Please see the link below for a copy of Amendment No 24 to the Waste Manual.

http://www2.gov.bc.ca/assets/gov/business/natural-resource-industries/forestry/docs/timber-pricing/residue-and-waste/amendment_24.pdf

Nov 1, 2015 New table 6.2 Coniferous Average Sawlog Stumpage rates for Woodlots.

Mid October I sent a communication to the Associations with the proposed update to the IAM for Table 6.2.



Debbie Zandbelt, RPF
Interior Timber Pricing
Coordinator

The table that sets out the tabular rates by species for woodlots. November 1, 2015 this table was finalized and can be found at the following link.

<http://www2.gov.bc.ca/gov/content/industry/forestry/timber-pricing/interior-timber-pricing/interior-appraisal-manual>.

Communication

Next month the Federation’s timber pricing folks are again meeting with Timber Pricing Branch. We hope to make this a standard bi-annual or annual update. This helps woodlot licensee’s by successfully communicating our positions on the current issues, allows TPB to update us on their key projects, and facilitates movement forward on joint projects as the Flat Fee for Waste proposal. November also brought an update to the Regional Interior Appraisal committee’s as well as the Provincial MPS technical committee. Both these committees continue to work on updates to the IAM and clarification where needed. With the digital technology available more changes to the way data is collected and analyzed seems to be the topic on every agenda. A current example is cycle time analysis. The Selkirk District (Kootenays) is currently using tracking devices in 20 logging trucks to then improve cycle time data. The speeds, downtime, season, road conditions etc are all being built into these programs – so far it is amazing what data we can get. Now we are faced with how to incorporate the data into the IAM. Even though most Woodlot licensees are on tabular rates, it is important to remember our tabular rates are based on a percentage of the major tenures stumpage rates. So when more efficiencies are gained

to change the major tenures stumpage – ours in turn changes. This latest initiative is a benefit to the licensee on two fronts. One is more accurate data collection; and two it is another measure to improve safety. Logging truck fatalities (or the public running into logging trucks) are often linked to road speeds and road conditions. Both exist as costing functions in the appraisal manual. Safety is here to stay – and as a mother of two young ones – I understand we all need to come home safe every day. The logging truck drivers are finding out – if you’re doing something unsafe – be prepared to hear about it.

As always please send me an email if any questions or concerns. Debbie@woodlot.bc.ca. ♦

The FBCWA has a number of items that would make great gifts for Friends, Family, Contractors and others on your list. Items in stock include Screen-printed logo on T-shirts and Coffee Mugs, Embroidered FBCWA logo on golf shirts, oilskin ball caps and knitted toques. Order through the WPDC coordinator, Cathy McClary. ♦

Editor’s Note

Thank you to woodlot licensees who voted for the Council Directors. The Board welcomes Dean Daly, John Massier and Chris Hawkins. ♦

AGM Resolution and Log Markets

by Ed Hughes

Great AGM highlighted by a Stumpage resolution for this Timber Pricing contractor

The Kelowna AGM was a great opportunity to make contact with the Woodlot Licensees from around the province. As usual the event was well hosted (thanks to SOWA and Boundary, especially Lisa, Fred and George), providing insight into the current and future priorities facing the Woodlot sector. The TAB rate system and manageable stumpage are still a priority for licensees as demonstrated by the only Council resolution presented or submitted at the WPDC AGM.



Ed Hughes,
Coastal Timber Pricing
Coordinator

The Stumpage Advisory resolution highlights a continued importance to coastal Woodlot Licensees. Alex Hartford moved the resolution, which was seconded by Mark Nighswander, both from Quadra Island, as follows:

Whereas “Stumpage is and should always be the most important financial consideration dealt with by the WPDC” be it resolved “Sufficient funds are allocated to ensure the retention of the best possible timber pricing consultants and that they have the budget to do all that is necessary to protect our interests”. The resolution was passed, with some confusion from those in attendance since most Licensees believe that the stumpage portfolio is already being handled.

The majority of members of the WPDC that I discussed this resolution with were of the opinion that stumpage has always been important and the highest priority for both the WPDC and the FBCWA. All of the questionnaires over time have always put stumpage as our

highest priority, so this resolution did cause some questions about adequate funding.

The coastal Woodlot AAC is approximately 250,000 m³ and stumpage is somewhere between \$250,000 to \$500,000/year. Our annual log value (AAC x \$70/m³) is a minimum of \$17,000,000/year that is

added to the local economy from either environmentally, socially or economically restricted forests. The Coastal Timber Pricing budget to monitor, report and represent the Licensees is \$14,500/year.

We only have to look back at a time prior to 2007 (TAB implementation) when stumpage was a dominant issue for Woodlot licensees (difficult, expensive, complicated, time drag etc.). Stumpage issues took an incredible amount of time for both licensees and government. The TAB system has worked well for both, but we must be diligent and pay continuous attention if we expect to keep what we have (TAB system and manageable rates). Over the past few years we have possibly been “lulled into stumpage complacency”. Licensees need to seriously and constantly consider the stumpage risks of complacency.

During the past few years I have provided continuous warnings regarding a serious threat of a stumpage increase (not to the TAB rate system) which I know sounds like a broken record. I am grateful that Alex and some others are listening. It is important that the WPDC and FBCWA directors hear from their licensees, as per this resolution, to ensure that we do not go backwards.

Timber Pricing Forester has been announced:

All of the Timber Pricing Branch positions are now filled. Charles Klasen, RPF is now the Coastal Timber Pricing Forester, being the final appointment, of the three Branch positions filled over the past 6 months.

Current Log Market Snap Shot: (Provided by Larry Spencer Log Broker - Probyn Log Ltd – Southern Vancouver Island)

Coastal log markets are going in many different directions depending on species and grade of logs. Western Red Cedar (Cw) continues to be at record high values and Yellow Cedar (Cy) has not recovered from its historic lows. Old growth shortages are resulting in higher prices, China is improving and Japan is strengthening due to lower log inventories.

Some interesting market trends stand out near the end of 2015.

- Due to the fire season being longer than normal this year the inventory of Old Growth Douglas Fir (Fd) and Western Hemlock (Hw) is very low, which is putting pressure on log prices.
- Due to the record high prices of Cw there is a trend within the domestic lumber market to replace Cw lumber with Cy for local use, because Cy log prices are less than 50% of Cw log prices.
- Due to this summer's warmer water than usual the Tereido (A salt water clam that tunnels into logs causing major damage to logs that are stored in the salt water) has been more damaging than normal, so log inventory stored in boom form within the Salish sea (east vs west coast of Vancouver Island) is becoming a problem. Logs stored since this summer in salt water have become a problem with warmer ocean temperatures and less fresh water flowing due to

drought!

- The US market is picking up due to the private land logging curtailment within the PNW, and the US housing which is steadily improving year over year.

Although we have been hearing that the China market is depressed, the export log values have increased by approximately 15% in the past 3 months. The market is improving likely influenced by the China economy improving, the exchange rate and inventories that are decreasing.

This is good news for the Hw export market, but not had any real influence on the lower grades of Fd due to the fee in lieu influences. The Fee in lieu is charged at approximately 15% on Fd and 10% on all other species exportable conifer grade/species, making the domestic market still the best option for most Fd log grades.

The Fd Chip and Saw market has dropped by roughly \$5/m³ in the past month and the Fd pulp decreased to approx \$36/m³. Hw pulp has dropped

over the past 3 months from \$48-40/m³. Once the inventory of these lower grades has diminish prices should recover.

Markets are changing on a daily basis so log sellers should keep a good eye on the current market, exchange rates, weather (as it relates to log supply) and world economy of US, China and Japan (our major log and lumber markets).

Coast MPS Advisory Committee: MPS advisory committee is in the final stages of the annual data analysis required for the 2016 update to the CAM. The technical part of this work is close to completion with the goal of implementation by Jan 1, 2016. The detailed work done by the MPSAC will be reviewed during the CTPAC meetings scheduled for December 2, 2015. The implementation and policy discussions at CTPAC are not part of the MPSAC terms of reference (focus is on data analysis).

Coast Timber Pricing Advisory Committee:

The CTPAC has scheduled its first meeting in over a year for December 2. The lack of meetings was primarily due to the TP staff retirements this spring and the need to finish the MPS data analysis this fall.

Flat Fee for Woodlot Waste:

The flat fee for waste is being discussed now that the new Timber Pricing staff positions have been filled. We are expecting to have more information for an update in the next issue of the Almanac.

The Bench marks for waste have been extended until Oct 1, 2017, which is outside of the Flat Fee for Waste proposal review.

New Appraisal Issues – Continuous communication

The Coastal Timber Pricing portfolio provides assistance to Woodlot Licensees upon request. If you have any concerns or issues I can be reached at 778-424-6129 or by email at ehughes2@shaw.ca. ♦

► From page 1

Brothers Lumber Ltd., a sprawling operation that has survived and thrived during economic downturns and changing market demands since the 1950s. With an annual intake of roughly 12,000 logging-truck loads every year and over 400 employees, it remains one of the region's largest employers.

After visiting the mill guests took to the woods and learned about the challenges of fire mitigation on a Westbank First Nation's Community Forest nestled snugly in a densely populated urban setting. Having already been impacted by several forest fires on the perimeter, experts at Ntityix Resources took aggressive measures in the Rose Valley and Bear Creek regions to reduce risk of future interface fires, at considerable expense.

Field tours on Day 2 took woodlotters back into the forest, where they took part in detailed presentations about soil assessment, species selection – elaborating on a presentation made earlier in the day regarding silviculture and climate change – the challenges of maintaining a successful tree-planting operation, and the history of silviculture practices in the forests surrounding Silver Lake.

A brief stop at the scenic Silver Lake Camp included an intriguing demonstration of new drone technology – a drone equipped with a specialized camera capable of assessing timber density from the treetops – which woodlotters considered an appealing alternative for mapping on rugged terrain.

A great deal of discussion emerged

from all the proceedings, but arguably the most engaging conversations came from the Education Panel. After hearing presentations from Al Kolkind (Rutland Senior Secondary) and Martin Tooms (Charles Bloom Secondary), who both run forestry programs, Jordan Benner, a woodlotter and doctoral candidate, and Michelle Britch, a student in Charles Bloom's forestry program, the Federation was inspired to strike an Education Committee.

This Committee hopes to provide a conduit for collaboration among the many programs running independently around the province. By sharing their resources and knowledge, forestry education can be strengthened, and that's great news for the woodlot program, and the industry as a whole. ♦



Scholarship Award Information and Application Form

RULES & REGULATIONS

1. Applications for this award must be received on or before April 29, 2016. Late applications will not be considered.
2. Applicants must be a direct family member of a woodlot licensee or private land owner who is a member of the local Woodlot Association and/or the FBCWA or a woodlot licensee can sponsor an applicant who has no direct family connection. In cases where the woodlot is not owned by an individual, one applicant per woodlot is eligible to apply in any given year.
3. Applicants must be planning to attend a post-secondary institution including a trades school within 24 months of the application deadline.
4. Preference will be given to students in grade 12 and recent high school graduates.
5. Preference will be given to students entering a forestry-related program. Students entering other areas of study are welcome to apply, knowing there is preference for forestry related study.
6. **Two scholarships, one for \$2,000.00 and one for \$1,000.00 will awarded to the top two ranked applications.**
7. The awards will be payable on receipt by the FBCWA of documentation confirming registration into the institution for post secondary education. This generally occurs in mid September.
8. Essays or letters and photos from applicants, particularly the successful applicant, may be printed in the Almanac.
9. The decision of the Awards Committee is final.
10. The Award Committee of the Federation of B. C. Woodlot Associations will be empowered to:
 - a) grant this award at its discretion;
 - b) withhold this award in any year if there are no eligible applicants, or for any reason deemed good or advisable.

IMPORTANT

Incomplete or late applications will not be considered. Please complete the application form and attach:

1. A letter describing the reasons which you feel qualify you for this award. Your letter should also include a detailed description of your experience in forestry, particularly on woodlots. Your letter may include information about your various interests and extra curricular activities.
2. A one page (approximately 500- 700 word) type-written essay titled **“If I was a woodlot licensee, how would I use my woodlot to promote forest education?”**
3. Two letters of reference from previous or current teachers or employers,
4. A copy of your **most recent** report card, and
5. A recent photo of yourself.

Return to: Federation of B.C. Woodlot Associations
Attention: Nancy Pezel, Treasurer
304-4510 Willingdon Ave.
Powell River, BC V8A 2M8

Or send it digitally to nancypez@telus.net with a subject heading of FBCWA Scholarship Application

Applications must be received by April 29th, 2016



Scholarship Award Application Form

Name: _____

Address: _____

Telephone: _____

Educational Information:

Currently enrolled in: _____

Post Secondary School you plan to attend: _____

Program you will be registered in for 2015-16: _____

Relationship/connection to Woodlot Licensee or to private land owner for Woodlot #:

(ie; daughter of Joe Smith, Woodlot #2345) _____

Woodlot Licensee/Private Land Owner to whom you are a direct family member or sponsored by, has been a member of which woodlot association and for how many years?

Please include information on volunteer work, extra curricular activities, membership in school and community organizations, sports, interests, hobbies etc as well as employment information. (you may use another sheet if you need more room or if it's more convenient for you) _____



Are you a supervisor ?

Do you **instruct, direct** and **control** workers in the performance of their duties?

If **yes**, then you **are** a supervisor.

A supervisor must:

- 1) Ensure the health and safety of all workers under their direct supervision,
- 2) Ensure that the workers under their direct supervision are made aware of all known or reasonably foreseeable health or safety hazards in the area where they work, and comply with all safe work requirements,
- 3) Cooperate with other persons carrying out duties related to the health and safety of workers, and
- 4) Communicate unsafe conditions to management and workers applicable to the work being supervised.

Supervisors Role in Safety

- Communicate safety rules and procedures to workers.
- Ensure workers understand them.
- Ensure workers follow them.
- Conduct safety meetings and follow up communications.
- Conduct emergency planning and implementation.
- Report unsafe behaviour.
- Report and/or investigate incidents.

- Participate on the safety committee/team.
- Be a resource for workers, and help them make safe decisions.
- Lead by example.
- Set the tone towards safety.

Key Things to Remember

- Supervisors have a responsibility to ensure workers are aware of and behave consistently with their responsibilities.
- Establishing safe work practices and ensure they are implemented is better than reacting to incidents.
- Don't assume people are aware of hazards.
- Controlling hazards for every worker on the site is critical in ensuring safety.
- Practicing due diligence by documenting your actions.
- Everyone in the forest industry needs to be **qualified** to do their work safely. This includes anyone doing the work of a supervisor.
- **Qualified** means being knowledgeable of the work, the hazards and the means to control the hazards, by reason of education, training, experience or a combination thereof.
- As a supervisor your employer must support you to ensure the health and safety of workers carrying out their work under your supervision and to ensure the health and safety of all workers at the worksite.

Resources:

BCFSC Forestry Supervisor Training: <http://www.bcforestsafe.org/node/98>

Workers Compensation Act, see section 117:

http://www.bclaws.ca/EPLibraries/bclaws_new/document/ID/freeside/96492_00

WSBC on line course for supervisors: <http://supervisingforsafety.com/>

This is one of a series of Spotlight on safety columns produced for the Woodland Almanac by the BC Forest Safety Council. If you have a suggestion or would like to see a particular safety topic covered, please let us know. BSFSC has a team of safety advisors with more than 100 years of combined forestry and safety experience to provide trusted guidance and advice in all safety matters. Email safetyadvisors@bcforestsafe.org or call toll-free: 1-877-741-1060. The BCFSC is here to support industry achieve excellence in health and safety for all forest operations and their workers. ♦

AGM Highlights

FBCWA Resolutions

The following resolutions were presented for consideration by both organizations at the AGM.

FBCWA Business Resolutions

1. Whereas

- Both co-chairs challenged members to consider education the roles of woodlot managers in both education & in expanding the role of woodlots in their local community; and
- We have seen an inspiring video on Project Based Learning; and
- We have just finished a severe wildfire season.

The Executive gives consideration to:

- Determine a plan to build from the Common Sense approach of David McBride and Shawn Flynn; and
- To expand the role and profile of woodlot licensees in their local areas; and
- Reduce the risk of severe fires on woodlot licences and associated private lands in local interface areas

2. Whereas:

- There are concerns at the fire control policies being exercised by the Wildfire Branch; and
- Woodlot licensees with area based tenures are particularly vulnerable to uncontrolled wildfires

The Executive gives consideration to:

The Woodlot Federation approach the Wildfire Branch to open dialogue whereby improvements to wildfire control can be initiated to reduce overall costs and minimize losses to the forest resource and related values.

WPDC Resolution

1. Whereas:

- Stumpage is and always should be the most important financial consideration dealt with by the WPDC;

Be it resolved that the WPDC Executive gives consideration to:

- Sufficient funds are allocated to ensure the retention of the best possible timber pricing consultants and that they have the budget to do all that is necessary to protect our interests. ♦

Thank you to the 2015 AGM Sponsors

DIAMOND



GOLD

Atco Wood Products
Kalesnikoff Lumber Co. Ltd
Nadina Woodlot Association
PRT, Nelson
Tolko
Zellstoff Celgar LP

SILVER

Hawkeye Holdings
RBC Dominion Securities Inc.
(Rhonda Hymers Team)
Spectrum Resource Group
TRP Forestry Consultants

BRONZE

DCT Chambers
Interfor
Vaagen Fibre Canada

IN-KIND FIELD TOURS

Gorman Bros. Lumber Ltd.
Kamloops Woodlot Education Society
Silver Lake Forest Education Society
Westbank First Nations

12



Welcome to new Directors

WPDC (Dean Daly, Chris Hawkins and John Massier) and FBCWA (Ainslie Jackman). Thank you to outgoing Directors: Denise English and Jim Collins (WPDC) ♦

Speech from the youngest member on the AGM educational panel:

Michelle Britch

Editor's Note: Michelle Britch received a standing ovation for her speech delivered as part of the Educational Panel at the AGM in West Kelowna. She is currently enrolled in the Charles Bloom Secondary School forestry program, in Lumby BC.

What was my experience in the Charles Bloom Secondary School forestry program like? My experience in the program is amazing so far, I say so far only because my time with this program isn't quite over yet.

When I get off the mini bus and step onto the dirt road of the woodlot I don't just enter my school day, I enter my job, my job is to cut, pull, and process every tree required that I come in contact with. When I step onto the lot everything from the outside world MUST go away, in the industrial and trades professions if you work with a cluttered mind you are at risk of injury or injuring someone else. Having a cluttered mind distracts from the now and means that you aren't fully focused on what you need to do.

Being in the forestry program has taught me time management, and what it's like to be on a deadline. In the forestry program there is no time for slack, being on a deadline is the ultimate push we/I needed in the program. In one single semester we only get so much time before our mobility starts getting slower due to mud and snow, the more we get done earlier the better. Everyday up at the lot I show myself and the other guys that I may be small, weaker, and a female, but I can still kick butt when it comes to things I'm passionate about. It shows that no matter who you are, what your colour, or size you are able to do



Patrick Luchak and Michelle Britch

anything, this program is for anyone and everyone. Having the program and the woodlot at our advantage is beyond helpful, using our resources and the technology provided we are able to experience things that we wouldn't be able to experience in the classroom. As my teacher Martin Toom's said in the June 21st Morning Star paper "This program is about building work ethic and being proud of what you do, and its showing respect for each other." Every day that I am up at the lot I am thankful and proud of what we are given and what we can accomplish.

How does the forestry program and woodlot offer opportunities to its students? At the time I joined I was already so fixated on becoming a heavy machine operator that I jumped at the chance to further my knowledge. I wanted to enrol in the forestry program because with joining the trades there are so many opportunities for you in the work world. Also rather than sitting in a classroom or in front of a computer for my classes I am able to work outside for about six hours of the school day and I still get four courses done.

Finally some students may think of this program as a loophole or the easy way out of the classroom, it's anything but. Our program has many parts to it; it isn't just cutting up trees and chopping them up for firewood. This program is about work and getting involved in the trades system, and you don't have to want to be a logger or operator if you join, many of the guys and girls before me and beside me are going into many different industries including gas, oil, construction trades, and more. This program is meant for everyone as it teaches the work ethic that we need for our future success.

And for a little fun I have composed a poem:

*I travel the road least traveled,
and I know that this is true.*

*But there is really nothing else
that I would rather do.*

*Working in a man's field
may not be easy to beat.*

*I know if I work real hard
I can sweep them off their feet.*

*My ethic is astounding,
I wish you only knew.*

*What this "little" girl can really do.
I thank you for listening to my side of
the story.*

*But now I must pass on all of the glory.
I must say one big thank you for all of
their time and care.*

Martin Tooms, Tim Thorpe, Lisa Marak, and Mrs. Doris Squair. ♦

Please help us out! If you are transferring or selling your woodlot make sure the new licensees get their own copy of the Almanac by asking them to send their contact information to the WPDC Coordinator. Also if you wish to remain on the Almanac's mailing list let Cathy know. ♦

FBCWA Priorities

October 4, 2015

Actively Being Managed	Action as time permits	Maintenance Mode
Safety	Forests for Tomorrow & other funding	Include incremental silviculture in WLPPR
Licence Authority to include plans & permits	Tax reform - silv savings plan	Woodlot 4 Windows support
e-FM & systems issues	Seek FFT & other program funding	Economic Development
Natural Resource Road Act	Undercut carry forward	Forest Services Providers Protection Act
Association Building	Natural Resources Permitting Project	Private Land Withdrawal
Inventory Standards	Training (Freedom to manage)	WL Estate Planning
Stumpage	Fire Prevention/protection	
Communications & PR	Rewarding volunteer efforts	
Admin Streamlining	FLNRO communications with WLs	
Professional Reliance/Qualified Persons		
Open Burning Smoke Control Reg.		
Species at Risk		
Resolutions		
Waste & Residue		
WL Program Growth & Improvements		
First Nations - consultation, info-sharing & title		
WLP Extensions		
Getting RESULTS		
Stewardship & Stabilizing the THLB		

14

Notes:

- *Re: e-FM & systems issues: Includes RESULTS, free-growing declarations, NRRA, WASTE, NRPP, reporting WHFs, etc.*
- *Re: Admin streamlining: Include updating the WL document & WL Consolidation Guidelines (particularly clarifying how cut control is to be handled).*
- *Re: WL Program Growth & Improvements: Differences in administration between districts and fewer, less experienced WL Foresters.*



2015 AGM Host Committee (L to R): Fred Newhouse, Greg Lee, Barb Newhouse, Lisa Marak, Frauke Delisle, George Delisle, Cathy McClary and John McClary



Working with communities to ensure the best use of their resources since 1952

Lifetime Member 2015 Shawn Flynn

Shawn and his partner Dave McBride acquired woodlot licence #1479 in 1995 in the Port Alberni valley.

Shawn became President of the South Island Woodlot Association in 2003 and held that position until the current term ends in 2016. He was instrumental in maintaining the membership of SIWA and organizing numerous field tours for SIWA members and guests to woodlots, managed forests, mills, and dryland sorts, promoting woodlots as wood sellers, improving other licensees marketing knowledge and potential business opportunities.

He also encouraged small business owners such as planting contractors, log buyers, or logging contractors to attend meetings to increase their awareness of woodlots and to foster relationships with licensees. As well as being on the organizing committee of a very successful FBCWA AGM in 2007, he and his business partner Dave provided a very memorable tour of their woodlot to AGM participants.

In addition to being a Director of the FBCWA from 2003 to 2012, Shawn was also a Director of the WPDC from 2012 until his recent retirement in March 2015. He was one of the leaders in developing and successfully formalizing the FBCWA's new relationship with the WPDC, through the joint Agreement.

For three years (2009-10 to 2011-12), Shawn was the FBCWA's safety committee, attending monthly BC Forest Safety Council (BCFSC) board meetings and constantly advocating for recognition of small licensees in a large



During an emotional speech, Shawn learned first hand why Movie stars wear sunglasses

bureaucracy. His hard work was instrumental in the BCFSC finally recognizing one size doesn't fit all and creating the Independent Owner Operator category for their safe certification system. In addition, when the BCFSC formed a WL & Community Forest Safety Committee in January 2015, Shawn volunteered as one of the Federation representatives.

Lastly, both Shawn and his business partner have done a tremendous amount of work with young people on their woodlot through the Outdoor Learning program. Although they are paid for the work through the school district, they spent countless hours promoting their ideas to teachers and the administration and finally helped develop this new program with the establishment of the 'School of Common Sense'.

Shawn was honoured as a Federation Life Member at the 2015 AGM for his many contributions to the woodlot program. We wish him all the best in his future endeavours. ♦

Telephone Support for using the Woodlot for Windows AAC program is available to all woodlot licensees or their representatives.
Contact Mike Bandstra ph: 250-847-4822 fax: 888-273-0209
email: mbandstra@forsite.ca ♦

Winter Workshop

The 2016 SISCO Winter Workshop: Forestry Opportunities that meet the demands of a changing world, will be at TRU in Kamloops, February 22-24, 2016. For more info: www.siscobc.com ♦



WoodSourceBC.com is BC's online wood marketplace! Connect with over 350 members searching for an opportunity to buy and sell more wood products and services than ever before. WoodSourceBC.com is a free tool AND it's easy to use. Create your profile and start listing items for sale, items you want to buy, and searching for new business opportunities. Over 95 listings posted this last quarter. Join this growing network today. Visit www.woodsourcebc.com. ♦

Purpose of the WPDC

The primary purpose of the WPDC is to ensure that levy fees are spent on woodlot licensee priorities to benefit and promote the woodlot industry throughout BC. Funds are collected through powers granted to Council under the Farming and Fishing Industries Development Act. ♦

Tree Seed for Reforestation

Ten Tips for Getting the Most Bang for your Buck

By Alistair Schroff

As you are contemplating seedling needs for the coming years, take some time to think about the seed that goes into the seedlings. This is important whether you “grow your own” with the nursery or buy overruns or get whatever the mill might provide you under agreements you have for reforestation. Here are ten tips based on my experience looking after silviculture programs on a variety of forest tenures including the family woodlot.

1. Find out the seed options for the species on your woodlot. The elevation, latitude and longitude of your planting areas will help determine which seedlots can be used on the woodlot (based on the Chief Forester’s Standards for Seed Use).
2. Improved seed (non-GMO) with faster growth and other characteristics like white pine weevil resistance is available for many species. Find out the genetic worth (or GW, which indicates increased growth potential) of the seedlots available to you.
3. Use Woodlot for Windows to see

if using seed with higher GW makes a difference to your potential harvest level. Faster growth of your new stands might fill in a timber supply “pinch point” so you can harvest your currently merchantable stands at a higher rate. Regardless, it should increase your harvest levels in the long term.

4. Consider the cost of the seed. Seed is sold by the kilogram, not the seed. Don’t forget that some species have small, light seed and others have heavy seeds. For example you get about 4 times as many spruce seeds in a kilogram compared to Douglas-fir.
5. Don’t forget the germination. If a seedlot has poor germination it will take more seeds to make a seedling (increasing seed costs and nursery costs). Check with your nursery to find out how many seeds are required per seedling so you can factor that into your decision.
6. Ask your nursery about “bed run” options. This means accepting some trees that would normally get thrown out but are still plantable. Those little shrimps might grow up to be the next Sidney Crosbys of the plantation so why

toss them out! This can reduce your seedling costs too.

7. Let nature provide the species that naturally regenerate well, have high mortality and don’t have good improved seed available at a reasonable price. In our area, abundant natural regeneration and high stem rust levels mean growing pine seedlings is not a good investment no matter how cheap the seed is. And improved pine seed is generally low GW, very scarce and extremely expensive.
8. Check the seedlot information if someone else is providing you with seedlings (through log sale deals, or Forests for Tomorrow, section 108 rehab etc.). Make sure you are getting the best seedlot (species, GW) for your woodlot - there may be a number of seedlots available.
9. See if a private vendor is negotiable on seed prices, particularly if you are talking a larger volume. Maybe you can make a cooperative deal with other licensees to secure a larger volume of seed at a lower price. Consider the same for your seedlings.
10. Remember that this is YOUR long-term area-based tenure, and you have the fairly unique privilege of reaping the benefits of these investments. Of the active investments you make into your woodlot to increase growth and yield, use of improved seed is probably the best investment you can make. Seed selection is worth your time and attention.

Check out the Tree Seed Centre web site for many useful links on tree seed information including the tree improvement program in BC.

<http://www2.gov.bc.ca/gov/content/industry/forestry/managing-our-forest-resources/tree-seed>. ♦

WANTED

**Douglas Fir, Western Larch,
Spruce, Lodgepole, White-pine
sawlogs.**

Competitive prices!

**Contact:
Reg Koodrin, Log Buyer
250-304-4482
regk@kalesnikoff.com**



■ My two cents worth: a licensee's opinion

Testimonial received about industry's OH&S training: An eye opener!

by Mark Churchill, RFT

Prior to attending the Small Employer OHS Training Course, I was probably like most people and thought that I knew what was required to provide a safe work site and what safety concerns to discuss when hiring a contractor to conduct some silviculture work, logging or road building.

Working part-time as a forest consultant in a two-man operation and as a woodlot licensee who hired contractors to conduct the harvesting and road construction phases, I had heard of the SAFE Certified designation but had thought it was only for the larger companies. That changed recently when in my area of the province, the local mills have moved to only hiring SAFE Certified contractors and if I wanted to continue to sell logs and provide consulting services to these sawmills and the

loggers who were working for these mills I too would have to obtain the SAFE Certified designation.

One of the first steps in obtaining SAFE Certification is to have someone in your company attend the two-day Small Employer OHS Training Course. For a woodlot licensee that means you. You can't hire a contractor to provide that service.

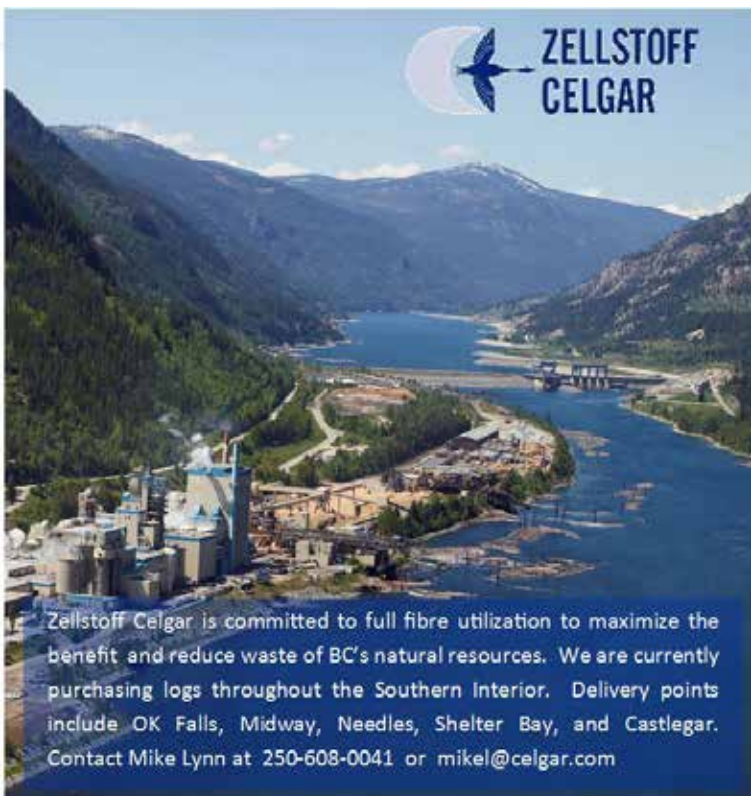
I attended the course in December 2014 expecting not to learn much; after all I have been working in the forest sector for 35 years. By the end of the first day I realized how little I really knew, and that I had taken too much for granted over the years in the area of safety responsibility. The instructor, John Gooding, guided the class made up of forest consultants, trucking companies and logging contractors.

The goal of the course was to prepare

you to set up and run an effective proactive safety program at your company and prepare you for the certification/audit process. By the end of day two it had achieved that goal and much more. Detailed and current safe work procedures for all phases of our operation are available as is advice on how to effectively implement a safety plan that consists of both the prerequisite paper content and more importantly the implementation of a safety attitude that will evolve into both a safer and a more productive worksite.

If you haven't taken the course yet, go to the Forest Safety Council website to sign up for one near you.

Mark worked for 11 years with the Ministry of Forests and for the past 24 years as a Forestry Consultant. He has been a Woodlot Licensee for 15 years. ♦



Links of Interest

- Our own website: <http://woodlot.bc.ca>
- Woodlot Safety Program: Safety info & Tools – Resources Packages: http://www.bcforestsafe.org/safety_info/resource_packages.html
- The Working Forest newspaper offers an e-newsletter and a newspaper on small-scale forestry across Canada: www.workingforest.com ♦





BRITISH COLUMBIA

The Best Place on Earth

MFLNRO OFFICIAL GOVERNMENT NOTICE BOARD



Reducing Red Tape

Is there something about managing your Woodlot Licence or private land that you think is unnecessary or overly bureaucratic? If there is, the following letter from Tim Sheldan, Deputy Minister for the Ministry of Forests, Lands and Natural Resource Operations will likely be of interest to you. It re-affirms government's objective is to reduce red tape, encourages citizens to put forward their ideas, and explains how you can submit your concern or idea. If you decide to make a submission, please send a copy to the Federation at admin@woodlot.bc.ca. Your input will help ensure the Federation priorities are consistent with the needs of licensees and landowners. ♦

Ref: 218765

November 18, 2015

Dear Sir/Madam:

In the 2015 Throne Speech, the Province of British Columbia committed to look at how citizens interact with government services in order to reduce red tape for British Columbians.

In October, the Government of British Columbia launched an online public engagement initiative to Reduce Red Tape for British Columbians. British Columbians are the experts when it comes to using and accessing government services. We want to hear their ideas about simple fixes that will improve their lives when they interact with government. Their input could lead to possible changes to the BC government's policies and programs to improve access to services for all British Columbians.

We recognize that citizens invest considerable time and money on government services and that they are truly the experts in how those services should work. Over the past decade, we have heard from citizens about the types of things that frustrate them when accessing government services; however, we want to get a deeper understanding of what their experience is like and what they think needs to be improved.

We also recognise that our key stakeholders regularly engage with us to improve our shared processes, and service effectiveness and we hope the initiative to reduce Red Tape will reveal complimentary ideas to our shared efforts. Some of the ideas we receive from citizens may be activities already underway, or require assessment for fit with existing programs or efforts underway with our stakeholders. Others require more, in-depth analysis, collaboration with partners, or major policy or legislation changes. While not every idea will be implemented, every comment and idea submitted will be reviewed and considered. We will also post the list of actions we will take as a result of any ideas you submit under this initiative, and update the list as we work through your suggestions.

We would like to invite you to join the conversation so that we can take action in a way that we know will make a difference and improve the citizen service experience.

Please join the conversation, tell others in your network about this opportunity, and share your ideas so we can serve you better: <http://engage.gov.bc.ca/helpcutredtape/>.

Sincerely,

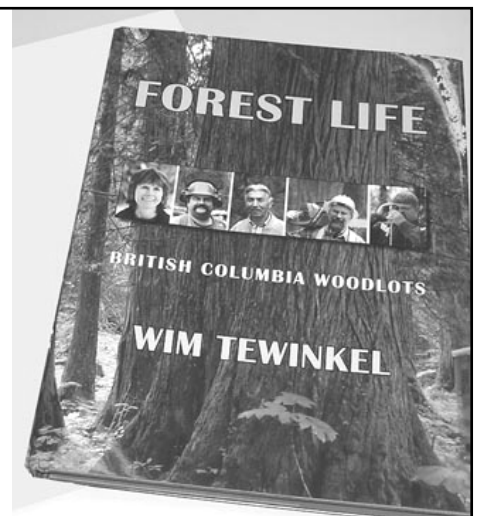
T. R. (Tim) Sheldan
Deputy Minister

“Forest Life” makes a great gift

Are you looking for a great gift idea? Look no further! Forest Life: British Columbia Woodlots by Wim Tewinkel showcases and celebrates BC's woodlots, woodlot licensees, and their families.

Through beautiful photos and a few words, this book captures the seasonal beauty of coastal and interior woodlots and portrays the landscapes and diversity of our forests as well as the stewardship of those who manage them.

You can order it from www.woodlot.bc.ca for only \$39.95, or woodlot licensees can buy it from their woodlot associations for only \$20.00 ♦



The FBCWA contracts a number of qualified people to work on projects that benefit all woodlot licensees. Projects are consistent with the activities approved in the annual work plan and are funded by the WPDC levy. In each issue of the Almanac this space will be dedicated to introducing the contractors, or FBCWA committee heads and executive members who oversee the contracts. Introducing...

Your New FBCWA Executive/Committee Members



Ainslie Jackman, RPF is one of the newest members to join the Federation's Board....

Ainslie lives with her husband, Cliff, adjacent to their woodlot 1427, at Tete Jaune Cache, 25 km north of Valemount in the Robson Valley. They have had the woodlot since 1995. They have two adult married children, Isla and Marlon. Cliff and Marlon are road building contractors so together, they build the roads for the woodlot, Ainslie does the planning and they hire out the logging and tree planting to local contractors. They are finally finished liquidating the pine beetle killed wood and look forward to planning harvests instead of reacting to infestations.

Ainslie has just retired from 30 years as the planning forester for a small, locally owned sawmill but still does some consulting for two local community forests. She is currently the President of the Board of Directors for the Valemount Community Forest which owns an industrial site. The push is on to bring small industries to

this site within the town of Valemount which lost its big mill in 2007.

Ainslie is a past Director of the Woodlot Product Development Council (2006 – 2010)

Ainslie has been actively involved in the Tete Jaune Community Club for over 20 years now. When she is not practicing forestry or volunteering with the community, she loves to garden and travel. She and her husband are new grandparents who love to spend time with their first grandson.



Rick Walters
New Safety
Committee
Member

We welcome Rick Walters, a woodlot licensee from Horsefly to the WL-CFA Safety Committee. He is replacing Shawn Flynn. Rick was formerly on the BC Forest Safety Council as Director, Transportation & Northern Safety and has more than 25 years of BC forestry experience – from skidder operator to log truck fleet operator to area engineer to independent consultant. He joins Mark Churchill and Gary Hanson on the WL-

CFA Safety Committee.

We thank Shawn for his time spent working on the safety file and wish him all the best as he enjoys the next phase in his life.



Brent Petrick
New CFWO
Committee
Member

We welcome Brent Petrick, our new Canadian Federation of

Woodlot Owners (CFWO) committee representative. He is replacing Cliff Manning. Brent is a woodlot licensee, former president of the FBCWA and a Professional Forester who comes with a strong background in both Crown and Private Land Forest Management. Brent resides in the West Kootenays, near Nelson, B.C. He manages several Crown woodlots and large tracks of private land holdings for European land owners. Brent has always had an interest in national affairs and will be a strong representative with the CFWO.

We would like to thank Cliff for all his work on our behalf on national affairs and wish him the best as he pursues other interests. ♦

R & D Project Funding Available

The annual work plan has an allotment of \$5,000 for R & D Projects that will benefit woodlot licensees. If you have an idea for a project, submit a proposal to the Woodlot Product Development Council. Once submitted, proposals will trigger a discussion between the Council, Federation and proponent(s). The project proposal form can be found at: <http://www.woodlot.bc.ca/wpdc.html#projects> ♦

**Will consider any woodlot -
any condition - anywhere in BC.**

Contact Alistair Schroff
forestreeguy@yahoo.com
or (250) 694-3696

**S-100A Annual Safety
Refresher Course / Online**

Corporate & Individual Registration

Visit our official website at:

www.firesafetraining.com

250-372-0097 or Toll Free 1-800-372-0244

**WHMIS is Also Available Through Our Website
Recognized, 2 Day S-100 Courses Available**

**Want trusted safety advice?
Best practices? Confidential input?**

Contact your woodlot safety experts.
Email safetyadvisors@bcforestsafe.org or
call toll-free: 1-877-741-1060
www.bcforestsafe.org



BC Forest Safety



West Fraser

LOG PURCHASE TEAM

Contact one of us for your sale of Sawlogs and Peelers

CHETWYND	Jesse Rashke	250-788-4417
FRASER LAKE and FORT ST. JAMES	David Johnson	250-699-6729
100 MILE HOUSE and KAMLOOPS	Colin Neiser	250-706-8141
QUESNEL and PRINCE GEORGE	Mike Sarabyn	250-991-5431
SMITHERS, HOUSTON, HAZELTON and TERRACE	Chris DeHoog	250-847-6506
WILLIAMS LAKE	Rob Sutton	250-392-1393

Advertising Rates

As a service to FBCWA members, the Woodland Almanac will make space available for non-commercial ads, free of charge. Commercial advertising space is also offered to enterprises at the following rates:

Business card.....\$50	Quarter page \$135
Half page.....\$175	Full page \$250

There is a 10% discount for ads appearing in two or more issues. A complementary annual subscription is mailed to all advertisers.



**Thank you
to our contributors
for this issue**

Tom Bradley
Michelle Britch
Sara Grady
Ed Hughes
Mark Churchill

Mark Clark
Brian McNaughton
Alistair Schroff
Debbie Zandbelt



QUALITY IN EVERY DIMENSION

Contact one of Log Buyers today for the sale of your SPF Sawlogs.

	Doug Nelson	Brad Johnson
Direct Line:	250-998-4215	250-998-4233
Cell:	250-961-3100	250-612-1599
Email:	dnelson@dunkleylumber.com	bjohnson@dunkleylumber.com



FEDERATION OF BC WOODLOT ASSOCIATIONS
381 Pheasant Road • Williams Lake, BC, V2G 5A9
Tel: (250) 398-7646 • Toll-free: 1-866-345-8733
Fax: (250) 398-7642 • E-mail: gen_manager@woodlot.bc.ca
www.woodlot.bc.ca

**WOODLOT PRODUCT DEVELOPMENT COUNCIL
THE WOODLAND ALMANAC**
PO Box 23011 • Plaza 33 Postal Outlet
Kelowna, BC V1X 7K7
Tel: (250) 961-0271 • E-mail: cjmclary401@gmail.com