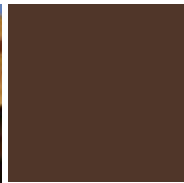




THE WOODLAND ALMANAC



www.woodlot.bc.ca

Spring 2018

IN THIS ISSUE

- 3 GENERAL MANAGER'S REPORT
- 4 WPDC PRESIDENT'S REPORT
- 5 INTERIOR TIMBER PRICING
- 6 COASTAL TIMBER PRICING
- 7 JOIN OUR TEAM!
- 8 FBCWA SCHOLARSHIP ESSAY APPLICATION INFORMATION
- 9 FBCWA SCHOLARSHIP ESSAY APPLICATION FORM
- 10 NOTICE RE: ANNUAL QUESTIONNAIRE
- 11 SAFETY ALERT: ARE YOU WORKING NEAR POWER LINES?
- 12 E-BITS FOR YOUR TWO BITS
- 13 WHERE YOUR \$0.25 ANNUAL LEVY GOES
- 14 IMPORTANT NOTICE: PURCHASERS OF PRIVATE MANAGED FOREST LAND
- 14 R&D FUNDING AVAILABLE
- 15 WPDC EXTRAORDINARY PROJECT PROPOSALS
- 15 LINKS OF INTEREST
- 16 THANK YOU TO OUR CONTRIBUTORS

STU DEVERNEY: Leading students to forestry careers



by Sara Grady

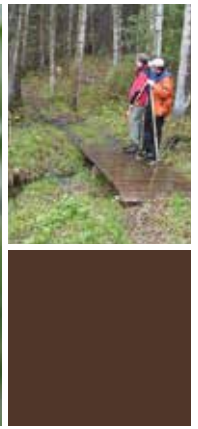
Most teachers will tell you their career choice was more of a calling than a coincidence. And then there's Woodlot Licensee Stu Deverney, RPF. Now retired from teaching, he became one of the most respected and knowledgeable faculty members, heading up the School of Natural Resources at Selkirk College in Castlegar, BC, but the job came as a bolt out of the blue.

A lifetime forestry professional, Stu's path reached a deadend during the softwood

lumber dispute in the 80s. Many mills were modernising. His employer simply closed up shop. That would be second time Stu's career was caught up in forces well beyond his control: his tenure as an Assistant Ranger with the BC Forest Service came to an abrupt halt in the 70s in the wake of the oil crisis. Lumber prices plunged, markets adjusted, jobs in logging and forest management were literally on the chopping block.

His small hometown of Castlegar didn't have many other opportunities for someone

cont'd on page 10 ...



www.woodlot.bc.ca

FEDERATION OF BC WOODLOT ASSOCIATIONS

Contact: Brian McNaughton, General Manager • 381 Pheasant Rd., Williams Lake, BC, V2G 5A9
Tel: (250) 398-7646 • Toll-free: 1-866-345-8733 • E-mail: gen_manager@woodlot.bc.ca • www.woodlot.bc.ca

FBCWA BOARD OF DIRECTORS (previously referred to as the Executive, under the FBCWA's old bylaws)

President.....	Jeff Beale, Fort St. John	jbeale@telus.net
Vice President.....	Brian Amies, Golden	bdamies@gmail.com
Treasurer	Nancy Pezel, Powell River	islandswest@shaw.ca
Secretary	Lisa Marak, Kelowna	Imarak@telus.net
Director.....	Mark Clark, Prince George.....	markclarkprpf@shaw.ca
Director.....	Miles Fuller, Burns Lake	mdfuller75@gmail.com
Director.....	Jon Seinen, Houston	jonseinen@hotmail.com
Director	Coleen Maclean-Marlow, Quadra Island	cmarlow@gicable.com
Director	Reece Allingham, Quesnel	rallingham@hotmail.com
Director.....	Tyler Hodgkinson, Castlegar	isforestry@gmail.com
Director.....	Ian Lanki, 150 Mile House.....	ilanki@telus.net

FBCWA CONTRACTORS

General Manager.....	Brian McNaughton..	lone_tree@telus.net ... Tf: 1-866-345-8733
Timber Pricing (Stumpage) Coast...	Ed Hughes.....	ed@woodlot.bc.ca 778-424-6129
Timber Pricing (Stumpage) Interior.	Debbie Zandbelt	debbie@woodlot.bc.ca 250-549-3089
Admin Support & Communications .	Lisa Marak.....	Imarak@telus.net 250-765-6156
E-Business	Tom Bradley	tomb@netidea.com 250-226-7792
Bookkeeper.....	Heidi Denney	citizencane@shaw.ca 250-248-2633
Woodlot for Windows.....	Mike Bandstra	mbandstra@forsite.ca 250-847-4822

FBCWA COMMITTEE HEADS

Timber Pricing	Miles Fuller	mdfuller75@gmail.com 250-692-6578
National & External Affairs	Brent Petrick.....	smoky1458@shaw.ca 250-365-9742
Strategic Planning	Lisa Marak.....	Imarak@telus.net 250-765-6156
Tenure Rights	Fred Newhouse.....	efred.fn@gmail.com 250-308-7677
Education.....	Lisa Marak.....	Imarak@telus.net 250-765-6156

WPDC EXECUTIVE

President.....	Dean Daly, Smithers	deanrdaly@gmail.com
Vice President.....	Brent Petrick, Slocan Valley	smoky1458@shaw.ca
Treasurer	Alison Patch, Burns Lake.....	agpatch100@gmail.com
Director, Coast	Jerry Benner, Quadra Island.....	jerry@bennerforestry.ca
Director, South	Brent Petrick, Slocan Valley	smoky1458@shaw.ca
Director, North	Blaine Arnett, Prince George.....	greggcreek@shaw.ca
Director, Peace.....	Chris Hawkins, Yukon	chrisofmendenhall@gmail.com
Past President.....	Jon Massier, Quesnel	jmassier@xplornet.com

WPDC PORTFOLIOS

Almanac & Annual Report: Chris Hawkins, Brent Petrick; AGM: Dean Daly; Contract Management: Dean Daly, Brent Petrick; Extraordinary Project Proposals: Brent Petrick, Chris Hawkins, Jerry Benner; FBCWA Liaison: Dean Daly; Financial Management: Alison Patch; Fund Management Liaison: Blain Arnett; Nominations/Succession: John Massier; R&D Project Proposals: Brent Petrick, Chris Hawkins, Jerry Benner; Questionnaire: Blain Arnett, John Massier, Website: Blain Arnett; Woodlot Stewardship: John Massier

WOODLOT PRODUCT DEVELOPMENT COUNCIL • THE WOODLAND ALMANAC
Coordinator: Cathy McClary • Tel: (250) 961-0271 • PO Box 23011, Plaza 33 Postal Outlet, Kelowna, BC V1X 7K7
E-mail: cjmclclary401@gmail.com • Publication # 40035578

FBCWA MEMBERS

Boundary:	G. Delisle
Bulkley:	I. Weiland
Cariboo:	I. Lanki
Clearwater:	W. MacLennan
Columbia:	B. Amies
East Kootenay:	T. Quirk
Fort St. James Rep.:	S. Harrison
Fraser Valley:	R. Biller
Kamloops & District:.....	N. Fennell
Kispiox:	E. Plant
Lillooet:	Vacant
Mackenzie:	B. Sinclair
Nadina District:	J. Seinen
North Island:	C. Marlow
Peace River:	J. Beale
Prince George:	Vacant
Quesnel:.....	A. Waters
Robson Canoe:	N. Lorenz
Sea to Sky:	W. Tewinkel
Shuswap/Okanagan:.....	F. Newhouse
South Cariboo:	G. Zemanek
South Island:	J. Gregson
Stuart/Nechako:	P. Vahi
West Kootenay:	S. Deverney

FBCWA JOINT WORKING GROUP

Mark Clark
Cliff Manning
Tom Bradley
Coleen Marlow
Brian McNaughton

facebook

www.facebook.com/woodlotsbc

The Winds of Change are Blowing

by Brian McNaughton

Whether we like it or not, the winds of change are upon us. A new government with new policy directions, a record-setting wildfire season, the softwood lumber dispute, and the review of professional reliance are all examples of why the forest sector is likely to change in the next few months and years. The Federation is actively trying to represent your interests. If changes are going to be made, our goal is to make sure they are for the better – for you the licensees and landowners, for the resource, for the sector and for the people of BC.

So here is a summary of some of the recent work the Federation has been doing in this regard.

With respect to government policy, the Federation stays abreast of and provides input into new initiatives via formal and informal communication with government; often through the Ministry of Forests, Lands, Natural Resource Operations and Rural Development (FLNRORD). Types of more formal communication are the WL Joint Working Group, Minister's Forest & Range Practices Advisory Committee, Operational Issues Forums for the coast, southern interior and north; and interior and coast appraisal committees. Less formal is via the day-to-day business and discussions that take place. Much of the less formal communication actually occurs via the Woodlot Associations who are in constant contact with district offices. The value of Associations in this regard cannot be understated. They are a critical pipeline of information with the ministry. And here's my pitch – WL Associations are integral to the success of the WL Program and your licence. If you aren't a member of your local Association, please re-consider and sign up today!

In the fall, the BC Wildfire Services



Brian McNaughton,
General Manager

asked: *What operational improvements are required to protect forest and range values from future catastrophic fire events?*

The Federation responded that our forests need to be managed differently. Fire, and the risk of wildfires, needs to be a priority consideration when it comes to planning and practices. Fuel loads need to be reduced. Government programs need more funding... and accessing the funding needs to be simpler and more effective. In some cases, retention based management paradigms need to be re-thought – particularly in fire based ecosystems near populated areas. Too many of our forests are of poor health and in poor condition. We need to accept more deciduous or promote more heterogeneity in our forests. Is a forest with lower densities and a smattering of openings really a bad thing? We asked that impediments to abating hazards such as un-necessary waste assessments and delays in issuing burning permits be addressed. We also expressed concern that there are too few days when venting indices are acceptable for open burning and that we need to look at revising the indices or allowing continuous burning for small operations.

In the coming weeks, the Federation has two meetings scheduled with BC Wildfire Services – on Feb 28th as part of an all industry session and on March 7th to discuss issues specific to woodlot licences and community forests. Also, the Federation has already and will continue to engage with the consultant retained by BCWS to review and make recommendations regarding post-harvesting fire hazard assessments. The Federation sees all of these as

opportunities to effect positive change.

With respect to the Professional Reliance review, I was interviewed on behalf of the Federation on Nov. 8, 2017. The Federation also made a written submission. It, along with the submissions of others, can be found at: <https://engage.gov.bc.ca/professionalreliance/>. In a nutshell, the Federation said that it supports professional reliance but there are weaknesses that need to be addressed, including:

- Better defining what professional reliance really means;
- Establishing a stronger structure and framework for how it's supposed to work;
- Providing the support for professionals like Acts such as FRPA call for;
- Clarifying the roles and responsibilities between licensees and their professionals and government staff who review the work and decision makers; and
- Refining the scope of professional practice to what's truly important and warrants professional involvement.

It's tough to speculate what, if any changes, there will be to professional reliance. The engagement portion of the process is over. The review, including the report, is supposed to be released this spring.

In the meantime, the world of WLs continues to evolve. The Federation is working on FRPA improvements to address misunderstandings and misconceptions regarding Woodlot Licence Plans (approvals and extensions) and some issues identified by the Forest Practices Board's special investigation into WLs in the West Kootenay.

Enjoy your spring and summer. Take care and be safe. ♦

Initiatives for 2018

by Dean Daly

My first thoughts are to recognize the Board members of the WPDC for their time, skill and guidance for the organization on behalf of woodlot licensees. I would also like to recognize Cathy McClary for her many years of excellent service to the WPDC. Thanks very much to you all for your continued contributions to the organization!

Some highlights of recent and planned 2018 work include the following:

4

The WPDC investment fund continues to perform reasonably well given market volatility due to the conservative nature of the investment mix. The balance of the fund at the end of January was slightly more than \$3,100,000 with a 2017 annual return of about 6.5%.

The WPDC Directors have recently finalized budgets for 2018. The final approved budget for 2018 is \$401,615 (FBCWA-\$308,015, and WPDC \$93,600) plus an additional allocation of \$100K for WPDC Extraordinary Project Proposals should projects be



Dean Daly
President

approved for funding during the year. This is very close to our target budget level of \$400,000 per year. The budgeting process involves the continued collaborative work with the FBCWA executive to review and set priorities, provide program funding to advance the interests of woodlot licensees and support the ongoing goal of excellence in woodlot management across the province. Developing the work plan was particularly efficient this year as the respective Boards of the organizations worked hard to target expenditures on the highest value priorities – thanks to all involved for your efforts!

As an ongoing work item, the WPDC directors complete systematic reviews and updates to our policy documents as required. The most recent was a significant update to our Conflict of Interest Policy.

The WPDC directors will be working on a number of important items in 2018 including funding enhanced

survey support for the WPDC questionnaire, an annual review of Board performance, review of the WPDC Coordinator contract and an update to our 5 year strategic plan.

On behalf of the WPDC Directors, I would like to thank all woodlot licensees for their continued support. It is a privilege to work on your behalf to steward the WPDC levy funds, and to help deliver programs which benefit and promote woodlots in BC.

Dean ♦

Please note:
The opinions expressed in the Almanac do not necessarily reflect those of the Federation, the Council, or their members.



Please help us out! If you are transferring or selling your woodlot make sure the new licensees get their own copy of the Almanac by asking them to send their contact information to the WPDC Coordinator. Also if you wish to remain on the Almanac's mailing list let Cathy know. ♦

Waste Assessment, Stumpage Forecast Timing & Harvest Billing Queries

by *Debbie Zandbelt, RPF*

Woodlot licensees are logging! Volumes harvested in the Interior are higher than I have seen in my time with the Federation. What this brings to licensees is a great deal of interest in stumpage rates. Log prices have also been high. This leads to a steady increase in stumpage rates. In the next Interior Appraisal Manual (IAM) Table 6-2 update, you will see an increase in tabular stumpage rates.

A common request is to do a stumpage forecast for the annual August 1 stumpage rate update for woodlot licensees with existing Cutting Permits (CP). This update changes the CP's stumpage rate to the rate in Table 6-2 in effect at the time of recalculation (August 1). In May and November of each year the Table 6.2 in the Interior Appraisal Manual is updated. Therefore, if you have an existing cutting permit the rate will be updated in August with the values in the May 2018 IAM Table 6.2. IE: When the table is published in May we will have the exact numbers to be used for the August recalculation. If you are unsure of what zone your license is in (for Table 6-2) or what rate is applicable to you be sure to give me a call. We can walk through the steps together.

Another initiative on the go is the Waste Assessment Proposal. It is still a high priority and discussions with Timber Pricing Branch are continuing. The final sample data from the 2017 Ministry of Forest field data collection



Debbie Zandbelt, RPF
Interior Timber Pricing
Coordinator

is complete and is now compiled. We are awaiting a few more steps to completion and hopefully will have some news for everyone soon.

Updated

Stumpage Rate request form - November 2017. Upon receipt of a new Cutting Permit, a task to complete is to request the stumpage rate determination for that CP. From time to time this form is updated and I circulate it via the Associations. If you have not received a digital copy I would be happy to forward one to you.

Harvest Billing Systems (HBS)

Another useful HBS query request is scale reports. HBS can be queried on a chosen timber mark, for how many loads have been scaled, at the scale site of choice, and for any past dates chosen. This is particularly helpful to compare to your load slips and ensure none are missed. On the home page of the HBS website the 5th section down is labelled "special reports". If you select scale site summary and fill in the requested data on the next screen, hit submit and the information needed for your timber mark should appear. My contact information is below for any help you may need.

The Interior Appraisal Manual has a major update annually with July 1st of each year the target for release.

Thus, in March to July of each year the Interior Market Pricing Committee meet biweekly. In both Prince George and Kamloops, the Regional Appraisal Advisory Committees also meet 3 to 4 times a year. All these meetings are held to specifically discuss the technical details of stumpage calculation in the Interior, but also provide updates on industry and Timber Pricing Branch stumpage initiatives, and of course provide a venue for open communication. I represent you as Woodlot licensees on these committees.

Contact info for any questions or ideas is Debbie@woodlot.bc.ca or 250-549-3089. ♦

FBCWA Vision

Woodlot holders/owners will participate in a healthy and diverse forest industry with woodlot licences and private forest lands, making significant contributions to local communities and providing a sustainable supply of forest products.

The FBCWA will have a voice in forest and economic policy. BC's woodlots will be models of forest management excellence, and world-renowned for their social, economic, recreational, cultural, and educational contributions to rural communities. ♦

Manageable Stumpage Rates & TAB Rate Trends

by Ed Hughes, RPF



Ed Hughes,
Coastal Timber Pricing
Coordinator

The appointment of Al Bennet as the Timber Pricing Director has been well received on the Coast. Having been the Manager of Timber Pricing for the past few years makes the transition seamless. Al started off the month of January with two days of MPSAC face to face meetings. Congratulations to Al Bennet who has been an advocate of the Woodlot program and our Tabular stumpage rate system.

TAB rates for March 1, 2018

The TAB rate projections noted in table 1 will be effective March 1, 2018, which will be before this article reaches most of you. The rates have increased for the next year as the ongoing warnings have been predicting. During good markets TAB rate increases are not a serious issue (or at least not something that Coastal Woodlot Licensees have been complaining about). One of the ongoing concerns I continue to have is what will happen when our log values start to decrease (or drop significantly)?

Woodlot Licences Sawlog stumpage

Effective March 1, 2018		
Species	North Coast	South Coast
Balsam	2.44	1.28
Hemlock	2.64	1.53
Cedar	3.98	3.71
Cypress	1.44	1.72
Fir	2.98	2.99
Spruce	1.59	1.89
Other	2.98	2.93

rates provided by Timber Pricing branch for the year following March 1, 2018 are provided in Table 1.

Table 1 TAB rates for year following March 1, 2018

Our TAB rates have increased as our log values have been doing the same thing. The lag in our rate increases, during an improving log market, has not created a significant or unmanageable impact. With every up there is a down in markets (the old market correction). During a time in the future when log values are decreasing, and our TAB rates are staying steady, will be a difficult time for our group. Another warning!

TAB rate increases since 2013

Coastal TAB rates from 2013 (when all species for both North and South zones were \$.25/m3) to 2018 are shown on the line graph, indicating the dramatic

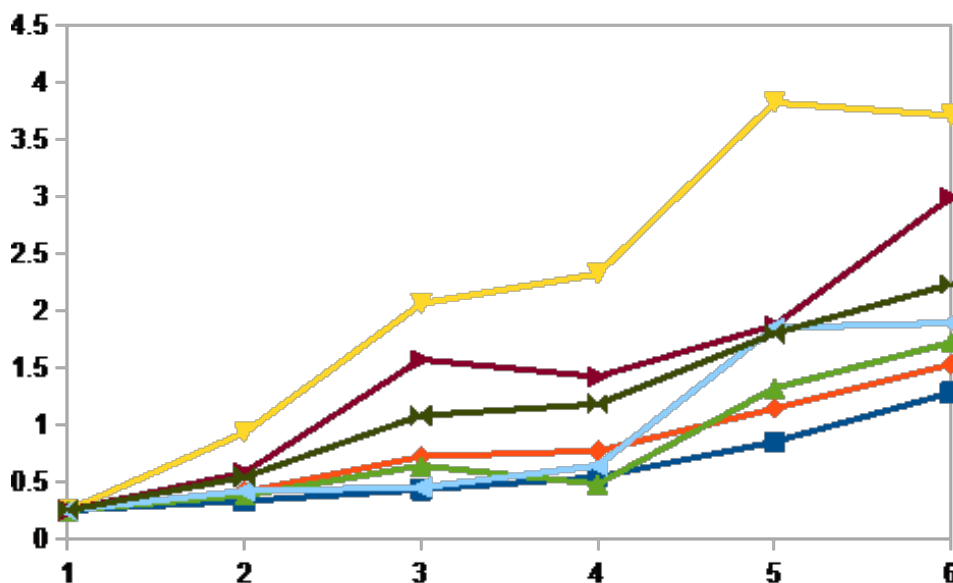
increase in our TAB rates over the past 5 years.

Woodlot licensee support local small-scale economies creating long term relationships with communities, aboriginal groups, government and all sorts of log markets helping to promote long term growth and development of coastal forest communities. It has taken a long and steady effort by a diverse group of resource managers to provide a much improved small and medium sized forest economy, within the urban fringe of many of the coastal communities. The main way these benefits are realized is when the stumpage rates are manageable.

Based on the past 5 years our TAB rates have increased significantly, which will be unsustainable when there is a log market correction. Woodlot Licensees need to consider how their businesses will continue to provide the full range of benefits when the margins

cont'd

Graph of TAB rates (\$/m3) from 2013 (1) to 2018 (6) for all species south zone coastal. Top line is Cedar, Bottom line is Balsam.



Join our Team!

The Woodlot Product Development Council (WPDC) is recruiting woodlot licensees to serve on the Board of Directors.

are decreasing. A heads up to look ahead and prepare for change.

Market Pricing System Advisory Committee (MPSAC)

The new Coastal Appraisal Manual was implemented on December 15, 2017, delayed by a couple more weeks than expected. The impact of the December 15 update is an increase in stumpage generally on the coast. An increase is something that the coastal industry has been very concerned about. We collectively still remember how long it took for the coastal industry to rebound from the 2007/8 log market crash. The coastal industry has slowly improved to the point where there is confidence so that investments are being made in the woods and manufacturing. As woodlot licensees develop, especially small markets niches, it can take decades to make things happen. Treading lightly on increasing and adding more layers of costs, that could negatively impact Woodlot achievements, that are regularly used as examples of forest success stories, is an important consideration at this time.

Coast Timber Pricing Advisory Committee (CTPAC):

The CTPAC meeting will follow the MPSAC meetings which are still ongoing.

New Appraisal Issues – Continuous communication

The Coastal Timber Pricing portfolio provides assistance to Woodlot Licensees upon request. If you have any concerns or issues I can be reached at 778-424-6129 or by email at ehughes2@shaw.ca. ♦

Are you:

- *interested in promoting the woodlot industry,*
- *concerned on how the annual levy is spent,*
- *willing to share ideas on local woodlot issues and priorities*

The WPDC Board is comprised of seven woodlot licensee directors representing the Northern Interior, Southern Interior, Coastal Forest Region and the Peace. To assist the volunteers on the Board, there is a contracted position of Council Coordinator currently filled by Cathy McClary.

The 2-year term positions are staggered so that vacancies come up every year. Directors are required to participate in the planning and carrying out of the Council mandate and to lead in the delivery of key projects. The time commitment is approximately 2 hours per month plus attendance at the AGM and the spring budget meeting. Board members are reimbursed for authorized expenses incurred during the performance of their terms.

This fall there may be up to 3 vacant director's positions that need to be filled. We need someone to fill a Coast Director Vacancy. We are also open to nominations from woodlot licensees in the Northern and Southern regions of BC.

The Board's primary responsibility is to ensure funding originating from the woodlot levy is prudently managed and used only for work and activities consistent with the Purposes of the Council. The Board approves the annual work plan and budget and monitors financial performance of the levy and investment funds during the year.

Delivery of programs is achieved through an Agreement with the Federation of British Columbia Woodlot Associations (FBCWA) to be the sole provider of support and services to woodlot licensees that are consistent with Council's purposes.

Current Board Members for 2017-18 are:

North: Dean Daly, Blain Arnett, Alison Patch

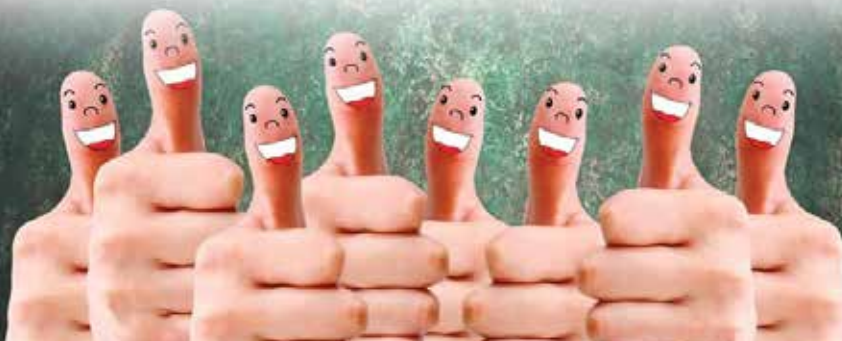
Peace: Chris Hawkins

South: John Massier, Brent Petrick,

Coast: Jerry Benner



If you are interested in joining Council's Board of Directors, please contact Cathy McClary, WPDC Coordinator at 250-961-0271 or send an email to cjmccclary401@gmail.com. ♦





Scholarship Award Information and Application Form

RULES & REGULATIONS

1. Applications for this award must be received on or before **April 27, 2018**. Late applications will not be considered.
2. Applicants must be a direct family member of a woodlot licensee or private land owner who is a member of the local Woodlot Association and/or the FBCWA or a woodlot licensee can sponsor an applicant who has no direct family connection. In cases where the woodlot is not owned by an individual, one applicant per woodlot is eligible to apply in any given year.
3. Applicants must be planning to attend a post-secondary institution including a trades school within 24 months of the application deadline.
4. Preference will be given to students in grade 12 and recent high school graduates.
5. Preference will be given to students entering a forestry-related program. Students entering other areas of study are welcome to apply, knowing there is preference for forestry related study.
6. **Two scholarships, one for \$2,000.00 and one for \$1,000.00 will awarded to the top two ranked applications.**
7. The awards will be payable on receipt by the FBCWA of documentation confirming registration into the institution for post secondary education. This generally occurs in mid September.
8. Essays or letters and photos from applicants, particularly the successful applicants, may be printed in the Almanac.
9. The decision of the Awards Committee is final.
10. The Award Committee of the Federation of B. C. Woodlot Associations will be empowered to:
 - a) grant this award at its discretion;
 - b) withhold this award in any year if there are no eligible applicants, or for any reason deemed good or advisable.

IMPORTANT

Incomplete or late applications will not be considered. Please complete the application form and attach:

1. A letter describing the reasons which you feel qualify you for this award. Your letter should also include a detailed description of your experience in forestry, particularly on woodlots. Your letter may include information about your various interests and extra curricular activities.
2. A one-page (approximately 500- 700 word) type-written essay answering the question **“If you were the licence holder, what would you do to reduce the risk of human caused wildfires on your woodlot?”**
3. Two letters of reference from previous or current teachers or employers,
4. A copy of your most recent report card, and
5. A recent photo of yourself.

Return to: Federation of B.C. Woodlot Associations
Attention: Nancy Pezel, Treasurer
304-4510 Willingdon Ave.
Powell River, BC V8A 2M8

Or send it digitally to nancypez@telus.net with a subject heading of FBCWA Scholarship Application

Applications must be received by April 27th, 2018



Scholarship Award Application Form

Name: _____

Address: _____

Telephone: _____

Educational Information:

Currently enrolled in: _____

Post Secondary School you plan to attend: _____

Program you will be registered in for 2018-19: _____

Relationship/connection to Woodlot Licensee or to private land owner for Woodlot #:

(ie; daughter of Joe Smith, Woodlot #2345) _____

Woodlot Licensee/Private Land Owner to whom you are a direct family member or sponsored by, has been a member of which woodlot association and for how many years?

Please include information on volunteer work, extra curricular activities, membership in school and community organizations, sports, interests, hobbies etc as well as employment information. (you may use another sheet if you need more room or if it's more convenient for you) _____

► From page 1

with Stu's background, given the economic pressures. So he applied for a job in the equipment room at Selkirk College.

His interviewer, knowing Stu's credentials, instantly veered him in the direction of teaching. Stu recalls John Adams insisting, "we can teach you how to teach." He understood that the wealth of Stu's knowledge would be a huge asset to the Natural Resources program. After a one-week crash course, Stu was thrust into a classroom for his one-hour lecture.

Twelve minutes in Stu was at the end of his material, and wondered what he should do next. A brave student put up his hand and informed Stu he'd gone a little too quickly, could he go over things again, this time more slowly? And so began his successful teaching career.

During his 27 year tenure Stu engaged and inspired hundreds of students. One of the most valuable teaching tools he had was two woodlots: Woodlot Licence 400 (held by Selkirk College) and WL 403, which Stu now helps Greg and Bob Sahlstrom manage. The

Salstrom family were homesteaders who arrived in Castelgar in the 1920s and carved out their livelihoods on what was then Farm License #23.

Stu would take his students into the woodlots for hands-on lessons and still allows Selkirk College to access the property, which is closer to the college than WL 400. Here, students get to experience firsthand the delicate balance of managing timber, wildlife, streams, watersheds, public access. Understanding that Woodlot Licensees are stewards of a public resource.

Former student and now an Instructor in the department marvels at Stu's knowledge of his woodlot: ask him to find a Schedule 4 Creek for the students to experience, he can lead them straight to it. She also says his students learn much more from him than just forestry.

Stu says that work as a woodlotter is a lifestyle choice. It's not nine-to-five and it's not a license to print money. But it is a way to contribute to the community. His depth of knowledge and passion are a great asset to BC's forests. ♦

Notice Re: Questionnaire How should Council Spend the Annual Levy?

Share your ideas or submit actual questions for the questionnaire to Cathy McClary. The questionnaire will be revealed at the AGM in Williams Lake on October 12-14, 2018. Prizes will be given to licensees whose questions are used in the annual survey. ♦

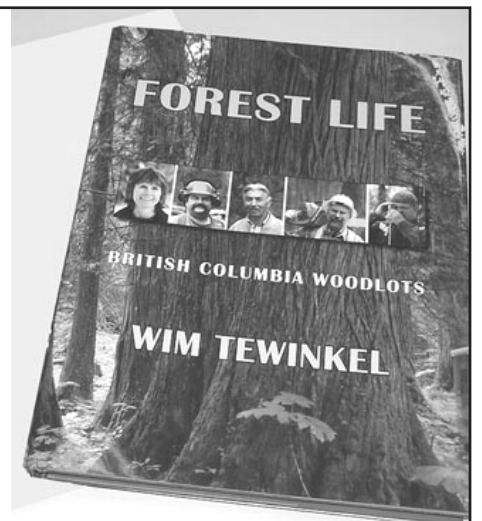


“Forest Life” makes a great gift

Are you looking for a great gift idea? Look no further! Forest Life: British Columbia Woodlots by Wim Tewinkel showcases and celebrates BC's woodlots, woodlot licensees, and their families.

Through beautiful photos and a few words, this book captures the seasonal beauty of coastal and interior woodlots and portrays the landscapes and diversity of our forests as well as the stewardship of those who manage them.

You can order it from www.woodlot.bc.ca for only \$39.95, or woodlot licensees can buy it from their woodlot associations for only \$20.00 ♦



SAFETY ALERT:

Are you logging near powerlines?

Recent incidents in BC's forest industry, in which trees being felled have contacted energized transmission lines, have led to the creation of some new documents by BC Hydro. These new documents support discussions with forest companies/ harvesting contractors to ensure obligations to identify the hazardous areas associated with harvesting near powerlines are addressed. One of these documents, The Logging Near Powerlines Emergency Contact Form, focuses on strict compliance with current WorkSafeBC (WSBC) Regulations.



Hazards include situations where any part of a tree to be pruned or felled is within the limits of approach or may fall within that distance (Limits of approach is defined in table 19 1A of the WorkSafeBC regulations)

A qualified person must also inspect the worksite immediately before the work starts to ensure that the initial assessment is still valid and that no additional hazards are identified.

Eliminating electrical hazards

Where possible as part of the initial planning process ensure that cut block boundaries are well away from the powerline corridor. If it is determined that a tree is within the limits of approach or may fall within that distance then a plan must be put in place to eliminate the electrical hazard in order to conduct harvesting in a safe manner. Part of the plan shall include consulting with the power company about de-energizing the lines. If that is not possible, consider eliminating the hazard in another way such as topping the trees or creating a buffer zone.

If the hazard cannot be eliminated then the plan must include obtaining assurance from the power authority that any reclose feature has been disabled. This assurance must be held on site by someone authorized by the utility. Proper procedures must also be in place to conduct the harvesting in a safe manner. These procedures must include the requirements for proper training of all workers as well as the appropriate equipment and supervision to carry out the work safely.

Resources:

BCFSC Working Near Powerlines: <https://www.bcforestsafe.org/node/2845>

WorkSafeBC Regulations: <https://www.worksafebc.com/en/law-policy/occupational-healthsafety/searchable-ohs-regulation/ohs-regulation/part-19-electricalsafety#D4856017F4574C08A7B76F0C0FA44FF8> and <https://www.worksafebc.com/en/lawpolicy/occupational-healthsafety/searchable-ohs-regulation/ohs-regulation/part-26-forestryoperations#SectionNumber:26.2>

For clarification regarding requirements and related information when logging near powerlines please contact:

WorkSafeBC: Don Schouten, Phone: 604-214-6989, E-mail: don.schouten@worksafebc.com

BC Hydro: Phil Graham, Phone: 250-549-8545, E-mail: phil.graham@bchydro.com

BC Forest Safety: Dustin Meierhofer, Phone: 250-562-3215, E-mail: dmeierhofer@bcforestsafe.org ♦

www.bcforestsafe.org/files/frm_BCHydroLoggingNearPowerlinesEmergencyContact.pdf

The specific WorkSafeBC Regulations that address working near powerlines include:

- Section 19.30, **Preliminary inspection.**
- Section 19.31, **Work in a hazardous area.**
- Section 26.2, **Planning and conducting a forestry operation.**

Electrical hazards

Electricity seeks the path of least resistance to the ground. That path could include a tree, mobile equipment, tools, or the human body. If any of these makes contact with an energized powerline, or if a broken powerline falls to the ground or lands on a vehicle or fence, electricity will flow to the ground and spread out in irregular concentric circles, in what is known as a ripple effect. The ripple effect can affect the ground for some distance away from the direct path of the electrical current, thereby posing a risk to workers and others nearby.

Responsibility for health and safety

Health and safety in forestry workplaces is the responsibility of all parties that have an influence on how work is carried out. Owners and licensees need to provide the employer or prime contractor with information necessary for identification and elimination or control of workplace hazards, including the location of powerlines in close proximity to the worksite. Planning of the operation needs to address how hazards are to be controlled and managed before work starts, and needs to be documented. Supervisors also need to ensure that workers are aware of the hazard that powerlines pose, and of the means to control the hazard.

Worksite inspections

Before any harvesting activities occur near powerlines, a qualified person authorized by the power company must inspect the worksite and assess the area for hazards.

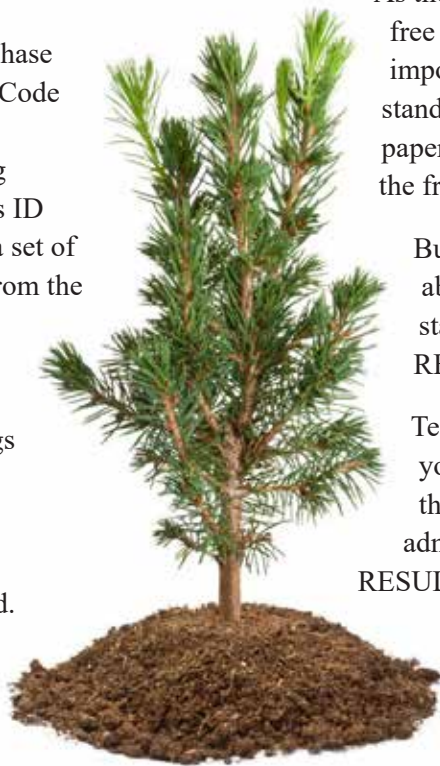
Correct the Stocking Standards in RESULTS for a Code Block

by Tom Bradley

During the start up phase of RESULTS, some Code blocks were entered into the system using a Stocking Standards ID (SSID) to “call up” a set of stocking standards from the library of stocking standards. This was thought to be the right way to do things for a time.

It was not.

Two things happened. First, using a SSID caused the block to be created in RESULTS as a FRPA block, with FRPA based amendment rules. This is incorrect as there is no regulatory capability to move a WL Code block to FRPA administration. Second, many of the stocking standards thus created in RESULTS do not match the approved standards in the paper Site Plan for the Code blocks, especially in regard to preferred and acceptable species. Note that we are legally obligated to achieve the Site Plan standards, not whatever ended up in RESULTS.



As these blocks come to free growing, it is critically important that the correct standards from the approved paper Site Plan be used for the free growing survey.

But what does one do about the incorrect standards entered in RESULTS with an SSID?

Technically speaking, you should change the block from FRPA admin to Code admin in RESULTS, and then use the Code admin tools to correct the flawed standards. But there is no simple way to change a FRPA

opening to a Code opening. You have to get the District outside, and then appeal to Victoria for a data fix. Then wait. Not efficient for anyone.

App Help has informed me that it is acceptable to use a workaround in this situation. Rather than apply to a data fix, use the Site Plan Amendment editing tool for FRPA openings to correct the stocking standards already in RESULTS to match the standards in an approved Code era paper Site Plan. Add a comment to explain that you are

using Site Plan Amendment to correct the standards to match the standards in a Code era paper Site Plan. Attach a scan of the Site Plan stocking standards section to the RESULTS file as rationale for the changes.

This process only applies for a specific circumstance:

- 1) Code block with paper Site Plan.
- 2) Opening created in RESULTS using a SSID to link to stocking standards.
- 3) Differences between Site Plan stocking standards and stocking standards in RESULTS.

No More Road Tubes

When I first started doing RESULTS reporting, I mapped all my spur roads and permanent skid trails as polygons from 4 to 18 m wide. “Road tubes” as they came to be known.

I removed them from the SU and showed them as NP in the forest cover.

If I had to do all this reporting work, I was darn well going to have the roads show up on my on-line maps!

Since then, I have had the opportunity to get to know Marc Rousseau a bit. Marc manages the team that moves information from RESULTS to VRI. By hand. I always thought a computer

cont'd on page 13

12



Purpose of the WPDC
 The primary purpose of the WPDC is to ensure that levy fees are spent on woodlot licensee priorities to benefit and promote the woodlot industry throughout BC. Funds are collected through powers granted to Council under the Farming and Fishing Industries Development Act. ♦

algorithm did it, but I was wrong. The input data is too complicated for an algorithm, so workers look at each RESULTS spatial when the time comes, and make a VRI spatial entry from it.

And remove each and every one of our road tubes, by hand.

So rather than curse Marc's team with extra busy work, report spur roads and landings and permanent skid trails as unmapped NP. You still have to map them, figure out the length, figure out the area, and then deduct the NP area from the SU to get Net SU area, and report the NP area as unmapped NP in forest cover. Truth be told, it is generally less work than making road tubes, and it greatly reduces someone else's work load.

Multi-Part Openings

Many of us have been told over time that a reported Opening had to be contiguous. It could not be made up of 2 or more discrete harvest patches.

For example, I have a 1.1 ha block on one side of a gravel pit, and a 0.9 ha block on the other side. Logged at same time. But I was told it had to be two separate openings!

Wrong.

There is no inherent requirement in RESULTS or harvest administration that requires this approach. A set of small patches harvested under the same authority may be reported as a single Opening, using a multi-part shape to define the opening spatial extent.

This is attractive to reduce admin costs when carrying out salvage operations. Why create 2 to 20 individual reporting units and surveying obligations if you can create 1 or 2?

Some things to consider:

1) How are you accessing the harvest units? If you have to build a skid trail

through otherwise unlogged forest, you need to follow *Submitting Forest Cover To Results For Openings With Treed Retention*, Section 4.2.2

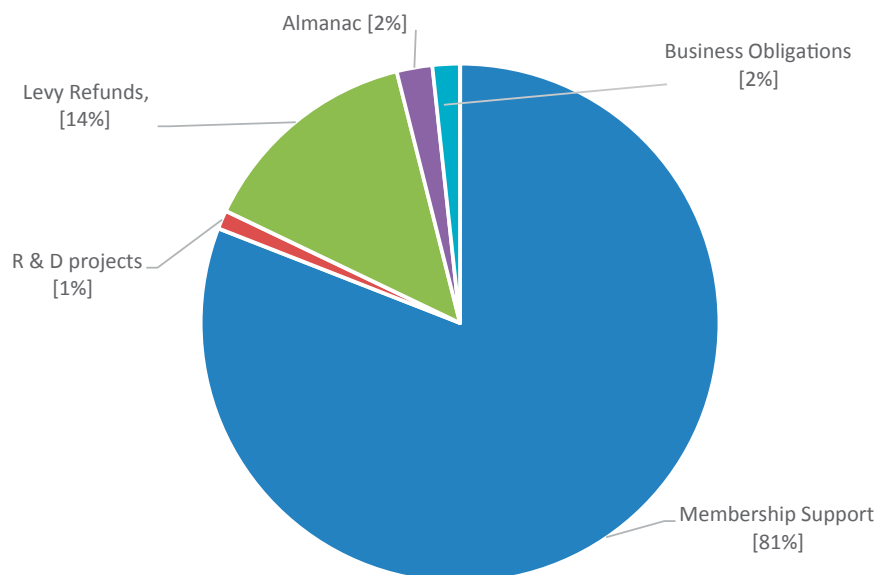
2) The regen clock for all the patches grouped together starts on the day first tree is cut in any patch. It could be a poor choice to spread the harvest out over 4 years.

3) If any of the patches encounters silvicultural difficulties and cannot be declared free growing, the entire Opening of grouped units cannot be declared free growing. You may wish to consider known elk hangouts, areas with potential brush issues. etc when/if you group patches into an Opening. Some may be better off left as unique admin units. ♦



Where your \$0.25 annual levy goes

The Woodlot Product Development Council has a responsibility to ensure funding originating from the woodlot levy is prudently managed and used only for work and activities consistent with the Purpose of the Council which are to: Promote a positive image of the woodlot industry and its products; educate the general public and buyers about the benefits of BC woodlots and small-scale forest management and initiate and support research programs for the development and enhancement of the woodlot industry in the province. The pie chart shows a breakdown of where the levy is used. ♦



IMPORTANT NOTICE: Purchasers of Private Managed Forest Land

BC Assessment is committed to providing, fair, accurate and reliable assessment services and property information for British Columbia. As part of honouring that commitment, we are providing this Important Notice to Purchasers of Private Managed Forest Land to ensure they are aware that:

- The land may be assessed at a higher value to account for the economic benefit of timber previously harvested on that land; and,
- Exit fees, as administered by the Managed Forest Council, may be charged if the property is removed from managed forest land class.

Private managed forest land and harvested timber are valued on the basis of legislated rates prescribed by BC Assessment through regulation each year and given Class 7 – Private Managed Forest Land. This property class is valued on a two-part basis, as detailed in Section 24 of the *Assessment Act*:

- Bare land value, which incorporates such factors as soil quality, accessibility, topography, parcel size and location; and,

BC ASSESSMENT

- Added value of the timber on the land, which becomes assessable when it is harvested:
 - o For example, timber harvested in the 2016 calendar year will show as added value on the 2018 Property Assessment Notice. For property taxes payable in the summer of 2018, part of the value may also come from the harvesting of trees two years previously, i.e. timber harvested in the 2016 calendar year.

Prospective purchasers of property classed as private managed forest land are advised to enquire about previous timber harvesting on the property and its potential property tax implications.

Exit fees may be incurred for properties removed from managed forest land class. The exit fee is intended to encourage long-term participation in the Managed Forest Program and is applied to property that is removed from managed forest land class prior to



fifteen years enrolment. These fees are administered by the Managed Forest Council.

For more information on exit fees, please visit the Managed Forest Council website at mfcouncil.ca or call (250) 386-5737.

For information on Managed Forest Land classification or details regarding your Managed Forest property assessment, please contact us at:

BC Assessment – Managed Forest
400 – 3450 Uptown Blvd
Victoria, BC V8Z 0B9
Email: managedforest@bcaassessment.ca
Phone: 1-866-valueBC (825-8322), Ext 00225 ♦

The FBCWA has several items that would make great gifts for Friends, Family, Contractors and others on your list. Items in stock include Screen-printed logo on T-shirts and Coffee Mugs, Embroidered FBCWA logo on golf shirts, oilskin ball caps and knitted toques. Order through the WPDC coordinator, Cathy McClary. ♦

R & D Project Funding Available

The annual work plan has an allotment of \$5,000 for R & D Projects that will benefit woodlot licensees. If you have an idea for a project, submit a proposal to the Woodlot Product Development Council by June 30. Once submitted, proposals will trigger a discussion between the Council, Federation and proponent(s). The project proposal form can be found at: <http://www.woodlot.bc.ca/wpdc.html#projects> ♦

Woodlot Product Development Council Extraordinary Project Proposals:

For the 2017-18 fiscal year, the Board of Directors for the Woodlot Product Development Council (WPDC) is commencing a pilot initiative to allocate funds to Extraordinary Projects that are not included in the joint work plan with the Federation of BC Woodlot Associations (FBCWA). Eligible proponents must be one of the following: Woodlot Licensee, Woodlot Association, WPDC Board of Directors or FBCWA Board of Directors. The total amount allotted is \$100,000. After the first intake of November 1, 2017, applications will continue to be received until the end of the fiscal year. In the event of competing proposals, the Board will assign the highest priority to Provincial projects that benefit the most woodlot licensees, a medium priority for regional and a lower priority for association level projects. Application forms can be found on the website: www.woodlot.bc.ca

For more information, please contact
WPDC Coordinator: Cathy McClary
Email: cjmclary401@gmail.com
Phone: 250-961-0271 ♦

Links of Interest

- Our own website:
www.woodlot.bc.ca
- The Working Forest newspaper offers an e-newsletter and a newspaper on small-scale forestry across Canada:
www.workingforest.com



- Douglas Fir Beetle:
http://www.for.gov.bc.ca/dqu/DouglasFirBeetles_factsheet_FLNRO_Web.pdf or <https://news.gov.bc.ca/stories/guide-helps-manage-douglas-fir-beetles-on-private-land> ♦



MEMBER *Reflections*

The Woodland Almanac is always looking for creative submissions for "Member Reflections" related to small-scale forestry. We'd like to hear from you on stories from the woodlot or see your photos from the block. "Member Reflections" can also be used to share obituaries on licensees who are no longer with us. If you'd like to submit an article or photo, contact Cathy McClary at cjmclary401@gmail.com.



Telephone Support for using the Woodlot for Windows AAC program is available to all woodlot licensees or their representatives.
Contact Mike Bandstra ph: 250-847-4822 fax: 888-273-0209
email: mbandstra@forsite.ca ♦



QUALITY IN EVERY DIMENSION

Contact one of Log Buyers today for the sale of your SPF Sawlogs.

	Doug Nelson	Brad Johnson
Direct Line:	250-998-4215	250-998-4233
Cell:	250-961-3100	250-612-1599
Email:	dnelson@dunkleylumber.com	bjohnson@dunkleylumber.com

S-100A Annual Safety Refresher Course / Online

Corporate & Individual Registration

Visit our official website at:

www.firesafetraining.com

250-372-0097 or Toll Free 1-800-372-0244

WHMIS is Also Available Through Our Website
Recognized, 2 Day S-100 Courses Available



LOG PURCHASE TEAM

Contact one of us for your sale of Sawlogs, Peelers and Pulp

CHETWYND	Ryan O'Dette	250-788-4423
FRASER LAKE and FORT ST. JAMES	David Johnson	250-699-6729
100 MILE HOUSE and KAMLOOPS	Shawn Fogerty	250-395-8279
QUESNEL and PRINCE GEORGE	Greg Scott	250-991-5304
	Scott Turton	250-992-0845
SMITHERS, HOUSTON HAZELTON, TERRACE	Chris DeHoog	250-847-2656
WILLIAMS LAKE	Rob Sutton	250-392-1393

CANADIAN FOREST PRODUCTS LTD.

Log Purchase Team

Fort St. John and Chetwynd:
Kevin Shaw 250-261-9776

Prince George, Bear Lake and Mackenzie:
Les Szerencsi 250-962-3385

Vanderhoof and Fort St. James:
Scott Elo 250-567-8312

Houston:
Andrew Leffers 250-844-1230

Vavenby:
Dave Poole 250-318-6311

Radium, Elko and Creston:
John Hatalcik 250-421-0878



Visit us online at canfor.com

Advertising Rates

As a service to FBCWA members, the Woodland Almanac will make space available for non-commercial ads, free of charge. Commercial advertising space is also offered to enterprises at the following rates:

Business card.....\$50	Quarter page \$135
Half page.....\$175	Full page. \$250

There is a 10% discount for ads appearing in two or more issues. A complementary annual subscription is mailed to all advertisers.



Thank you
to our contributors for
this issue:

Jeff Beale
Tom Bradley
Dean Daly
Sara Grady
Ed Hughes
Brian McNaughton
Debbie Zandbelt



FEDERATION OF BC WOODLOT ASSOCIATIONS
381 Pheasant Road • Williams Lake, BC, V2G 5A9
Tel: (250) 398-7646 • Toll-free: 1-866-345-8733
Fax: (250) 398-7642 • E-mail: gen_manager@woodlot.bc.ca
www.woodlot.bc.ca

WOODLOT PRODUCT DEVELOPMENT COUNCIL
THE WOODLAND ALMANAC
PO Box 23011 • Plaza 33 Postal Outlet
Kelowna, BC V1X 7K7
Tel: (250) 961-0271 • E-mail: cjmclary401@gmail.com