



## 2018 Fire Season and Key Forward Strategies

October 12, 2018

# Provincial Statistics (2018)



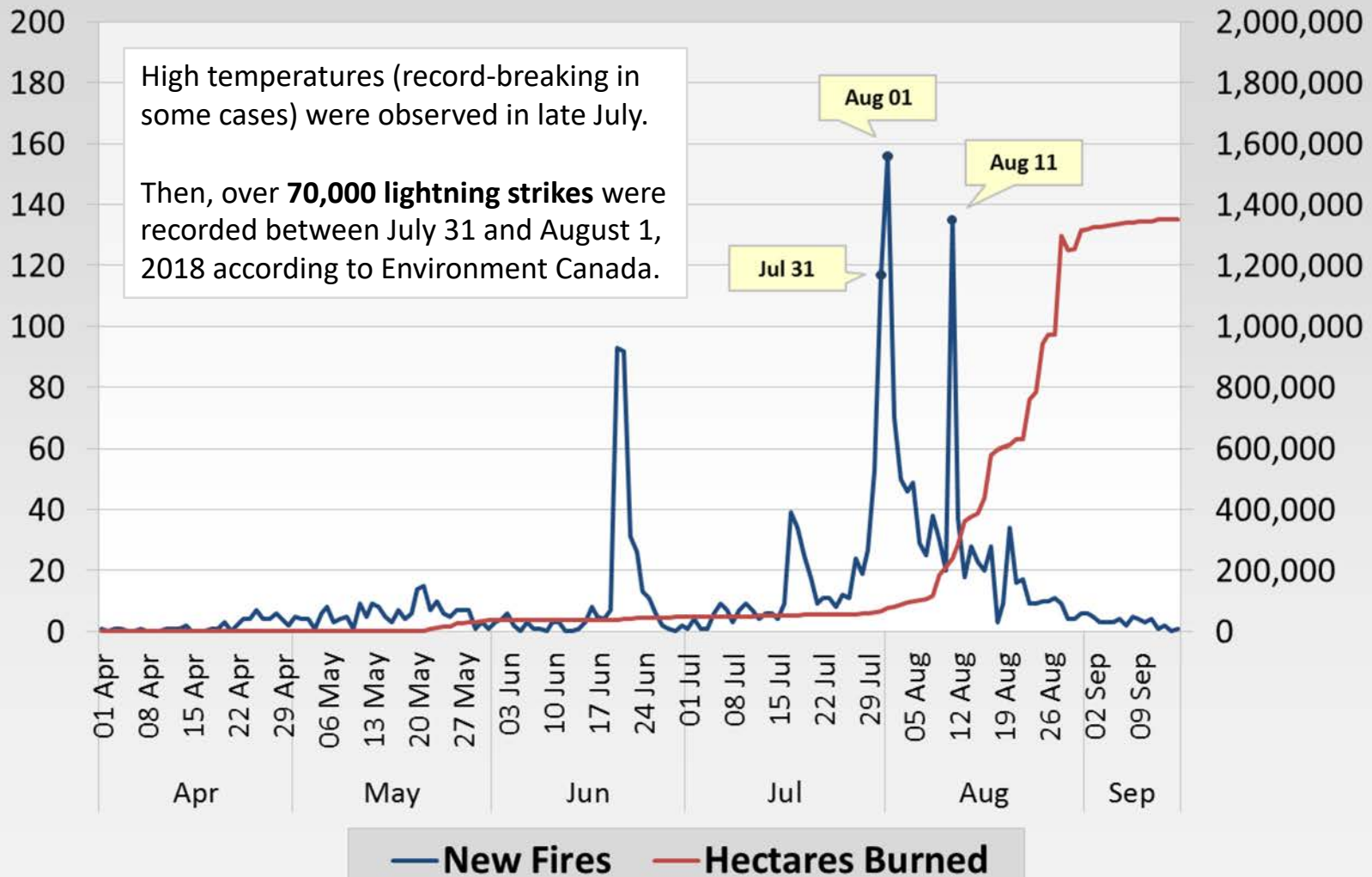
<b>Total fires</b>	2,068
<b>Lightning-caused fires*</b>	1,528 (about 73.9%)
<b>Human-caused wildfires*</b>	497 (about 24.0%)
<b>Area burned</b>	1,349,730 ha
<b>Fires of Note</b>	113
<b>Evacuation Orders</b>	66
<b># of properties evacuated</b>	2,211
<b>Evacuation Alerts</b>	124
<b># of properties evacuated</b>	17,939
<b>Suppression Costs</b>	~ \$467.2 million
<b>Total Days on Provincial State of Emergency</b>	24 days (Aug 15 to Sept 7)



\* The causes of some of wildfires have not yet been determined.

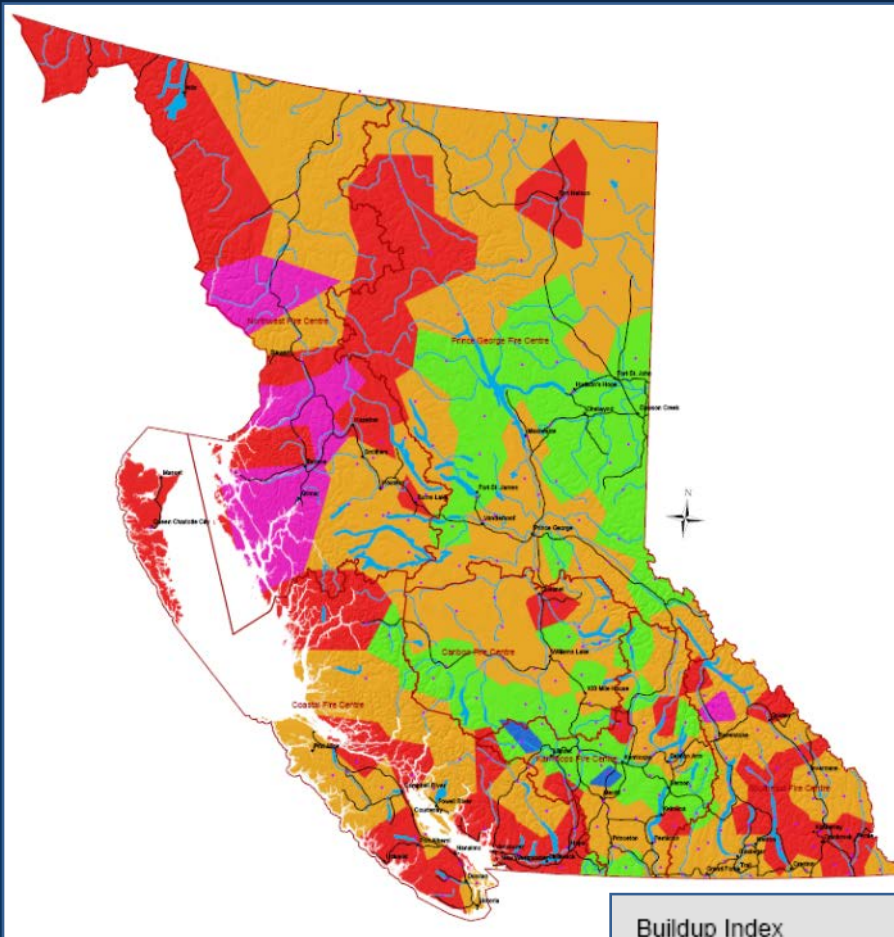
# New Fires and Area Burned (2018)

New Fire Starts

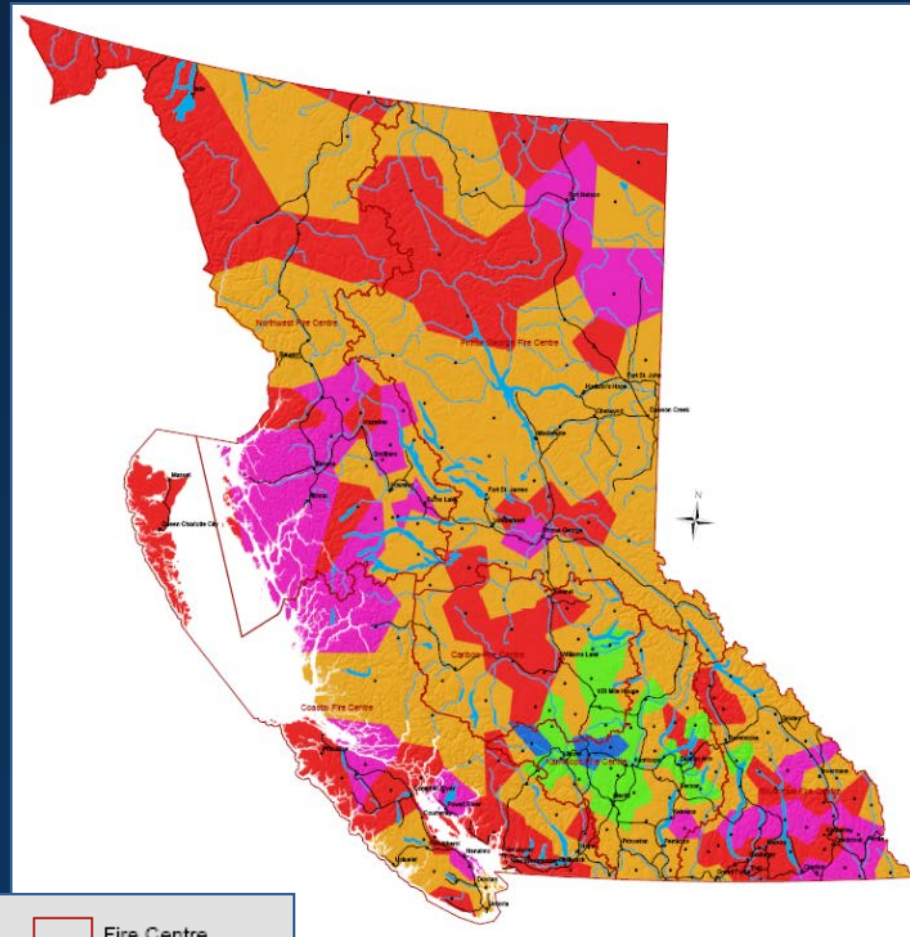


Hectares Burned Since April 1

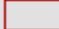
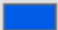


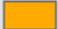


# Provincial Buildup Index (August 2018)



**Aug 8, 2018**



**Aug 22, 2018**

<b>Buildup Index</b>	 Fire Centre
 Below Normal	 Weather Stations
 Normal	
 Above Normal	
 New High	
 New All-Time High	

# Firefighting Resources (2018)



At peak capacity, BCWS was utilizing:

- **4,756** personnel total
- **961** out-of-province personnel
- **1,719** contract personnel
- **270** aircraft
- **200+** personnel from the Canadian Armed Forces

Out-of-province personnel came from every province and territory in BC (except Manitoba and Nunavut), as well as from the following countries:

- **Australia**
- **Mexico**
- **New Zealand**
- **USA (Washington)**



# Key Strategies Fire Season 2018



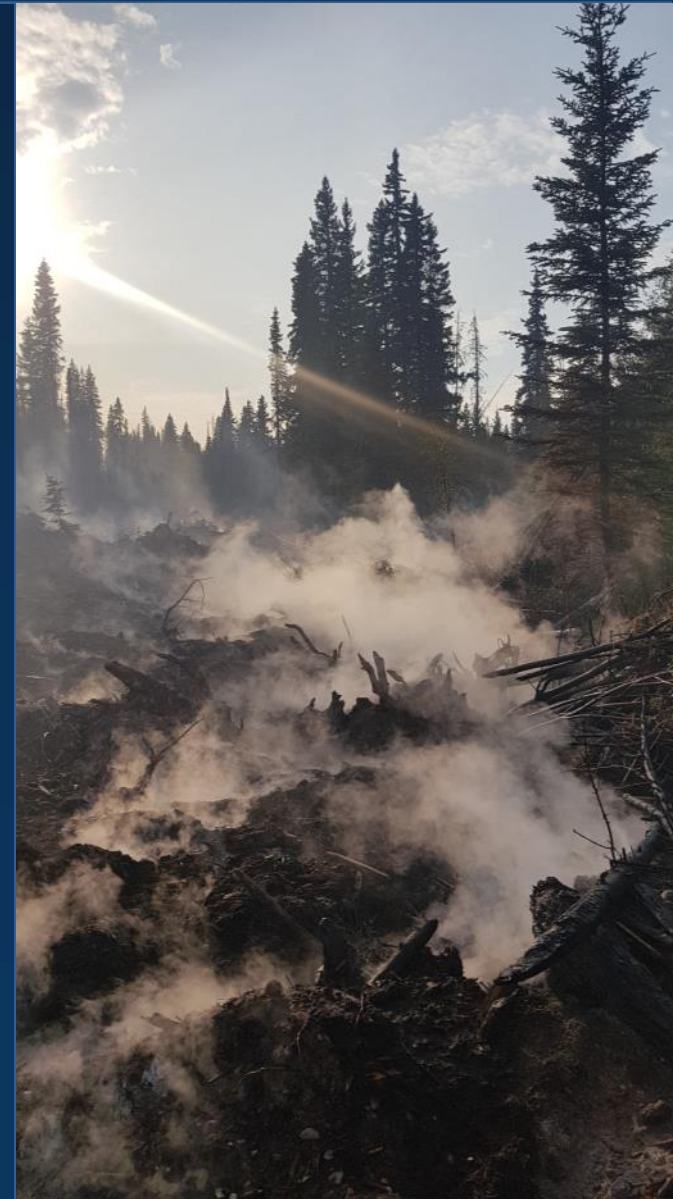
- Procurement of Type 2 Contract Crews
- Formalising Joint Hazard Management Teams approach
- Increased focus on prevention
- Research and Innovation
- Work with key stakeholders to ensure integrated approach to response, recovery, prevention
- First Nations engagement support

# Key Forward Strategies Continued



## Expanding capacity for Communications and Engagement with:

- Improved Social Media Strategy
- Additional Communications Staff at Fire Centres and PWCC
- Enhanced information sharing protocols with EMBC, and hiring of consultants
- Enhanced Interactive Wildfire Map
- Improved engagement with First Nations
- Improved Stakeholder Engagement, Industry weekly call
- Provincial Process for Cattlemen's Association



Questions?

