

A BC Forest Industry Perspective

Woodlot AGM

October 5, 2024

Jeff Mycock, RPF



Overview



Landbase



Harvest History



Factors Affecting the Current State



Impacts



Opportunity

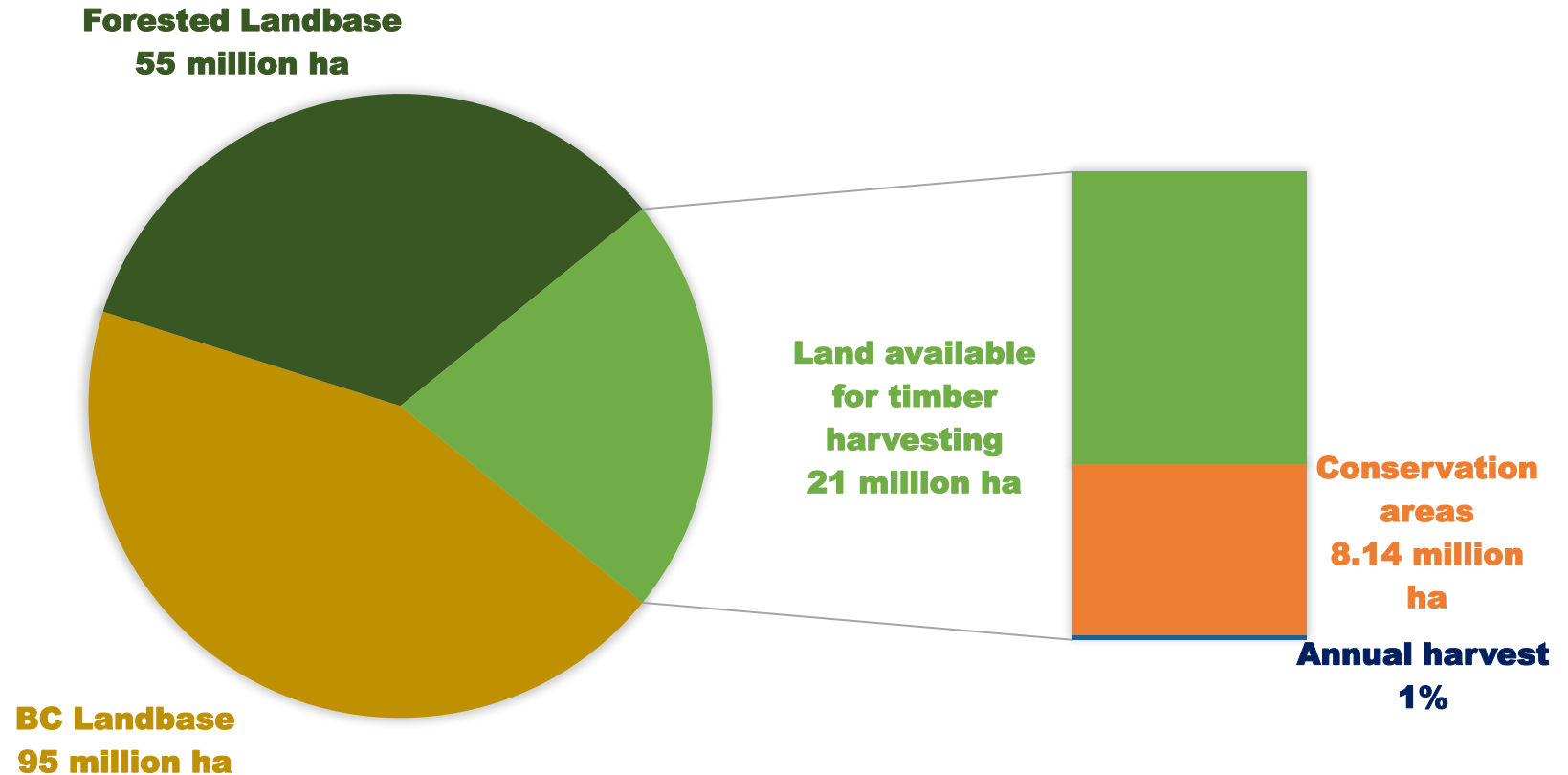


Future Focus

Every Challenge is an Opportunity

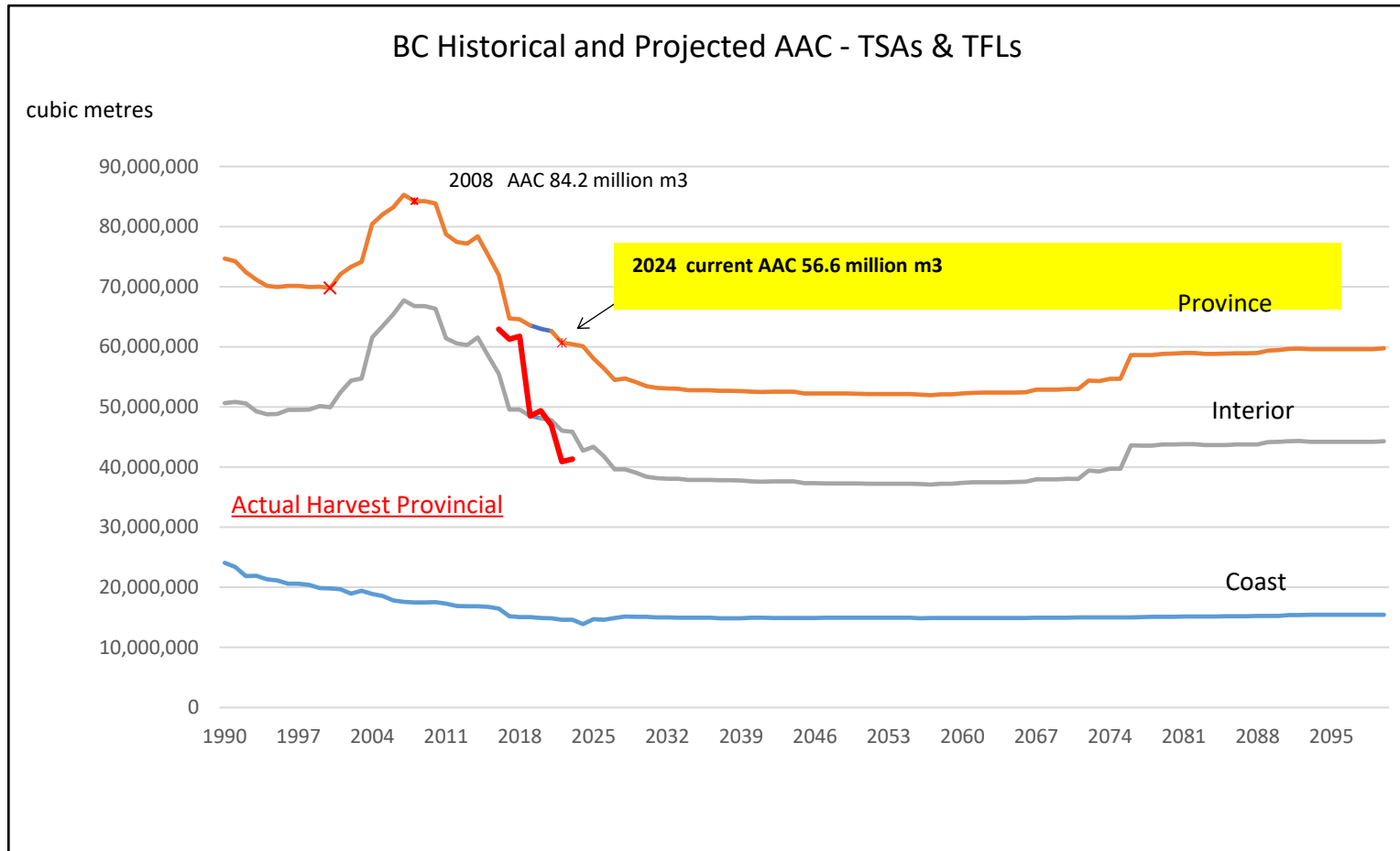
BC Landbase Overview

AREA AVAILABLE FOR TIMBER HARVESTING



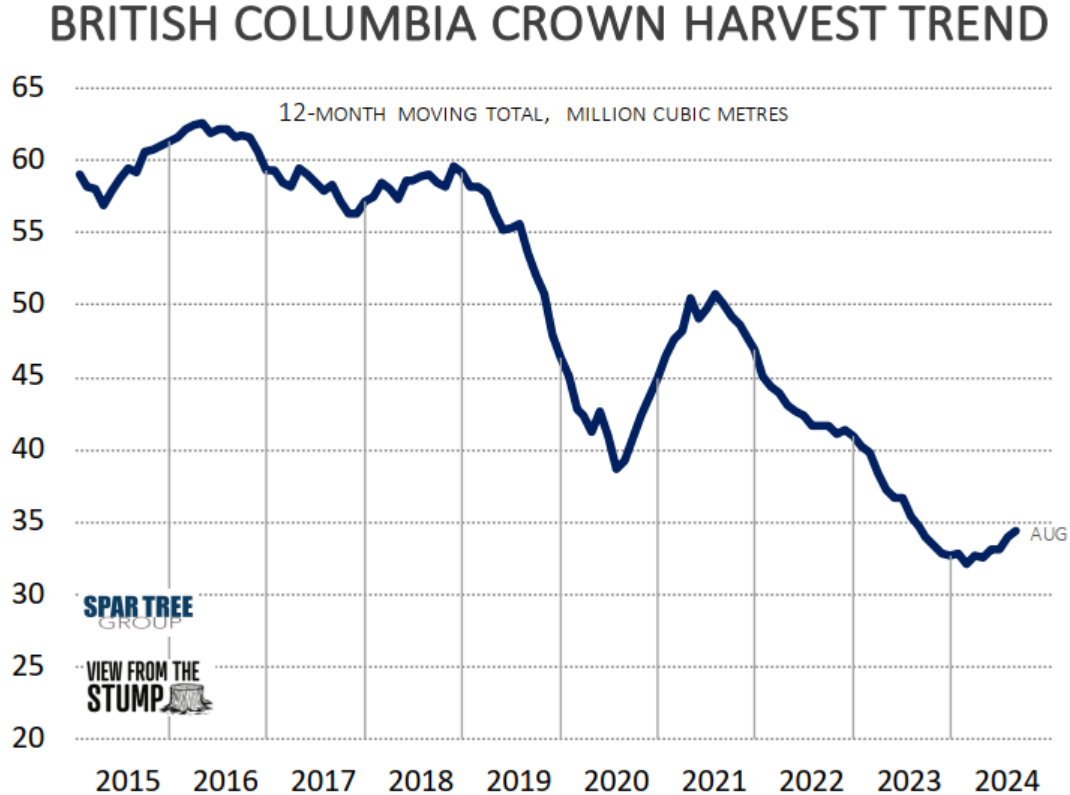
<40% of BC's Public Forest is Managed for Timber

BC's AAC & Harvest Levels



Harvest Levels Declining Rapidly ahead of AAC

BC's Historic and Current Harvest Level

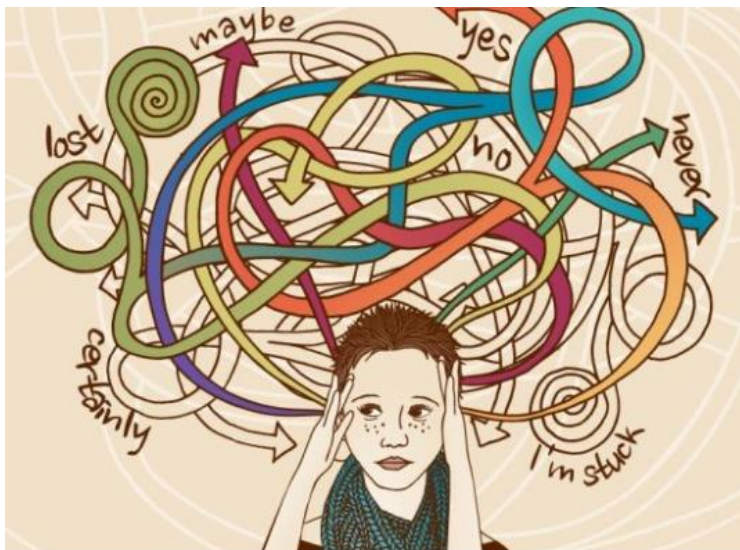
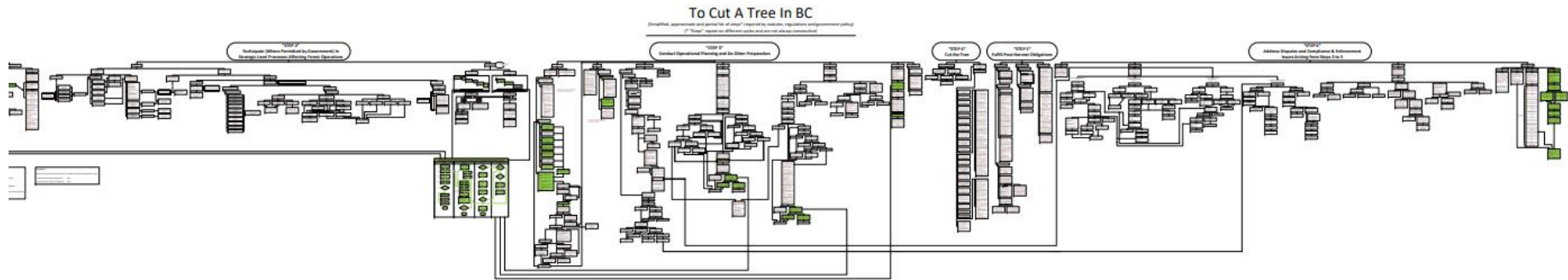


SOURCE: HARVEST BILLING SYSTEM, SPAR TREE GROUP



Signals of Crisis

What it Takes to Cut a Tree in BC



<u>Act</u>	<u># of Regs</u>
Environmental Management Act	25
Fisheries Act	20
Forest Act	40
Forest and Range Practices Act	14
Forest Practices Code of British Columbia Act	3
Heritage Conservation Act	2
Land Act	9
Professional Governance Act	8
Wildfire Act	2
Workers Compensation Act	12
	<u>135</u>

Laws Change with Governments = Inconsistent Forest Management Regimes

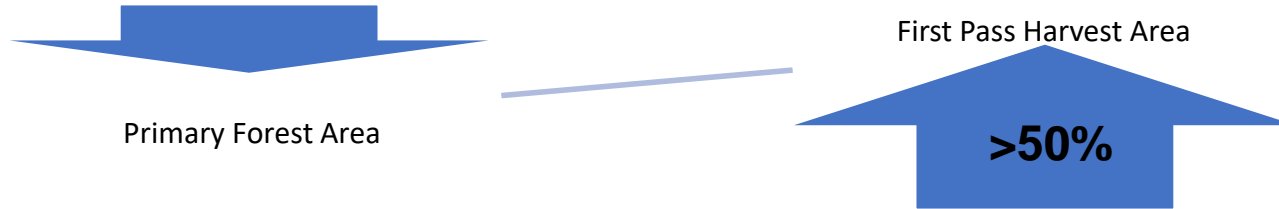
BC Forestry Law is the Most Complex & Dynamic in the World

Recent Federal and Provincial Policies Promoting a Further Myriad of Complexity

- BC Old Growth Strategy
- Biodiversity and Ecosystem Health Framework
- Clean BC
- Watershed Security Strategy
- Caribou Recovery Strategy
- DRIPA
- 30x30

Well intentioned but delivered together in overlapping ways that make implementation daunting at best.

Current State – Interior Forest Example



- Primary forests are largely mature and overmature due to multi-decadal fire deficits
 - Deliberate fire suppression to preserve timber supply
- Forest Health impacts (Bark Beetles) are killing trees at unprecedented levels
- Wildfire is burning remaining “primary forest” at double the rate of harvest
- Wildfire records for area burned have been broken three times in the last 8 years
- Wildfire intensities are extreme due to fuel loads, drought, and temperature extremes

Enhanced Emphasis on Preserving “Primary Forest”

Old Growth Interior Douglas-fir Forest



Old Growth Interior Spruce Forest



Old Growth Interior Lodgepole Pine Forest



Succession of Interior Old Growth



A Common Scenario in Western Canada Now



Approx 10% of the Provincial Forest has Burned since 2017

RESOURCE SCARCITY – Cumulative Effects



34 Year Landbase
History

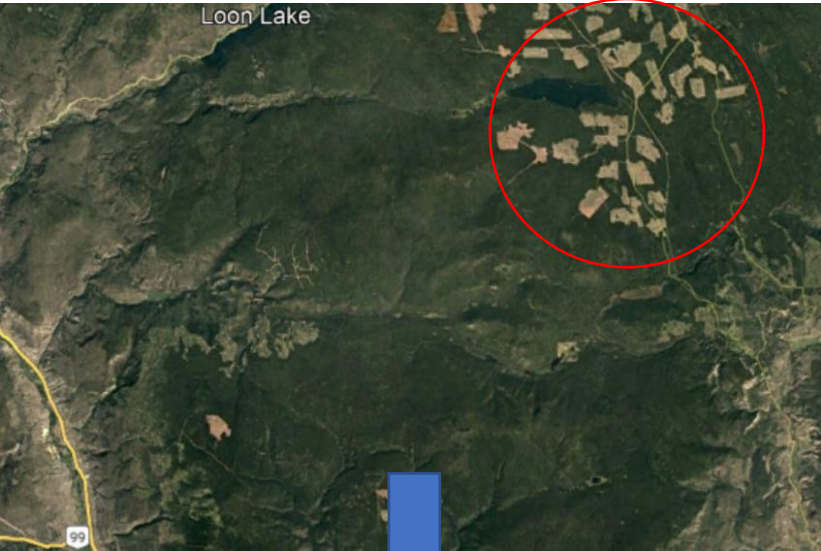
Logging / Mountain
Pine Beetle / Wildfire

Interior Douglas-Fir &
Montane Spruce BEC

5 Years working in the
area (2001 – 2006)

RESOURCE SCARCITY – Cumulative Effects

1987



- 1987 – Enhanced Utilization – Pine Harvest
- 2017 – Post MPB Salvage
- 2021 – Post Wildfire

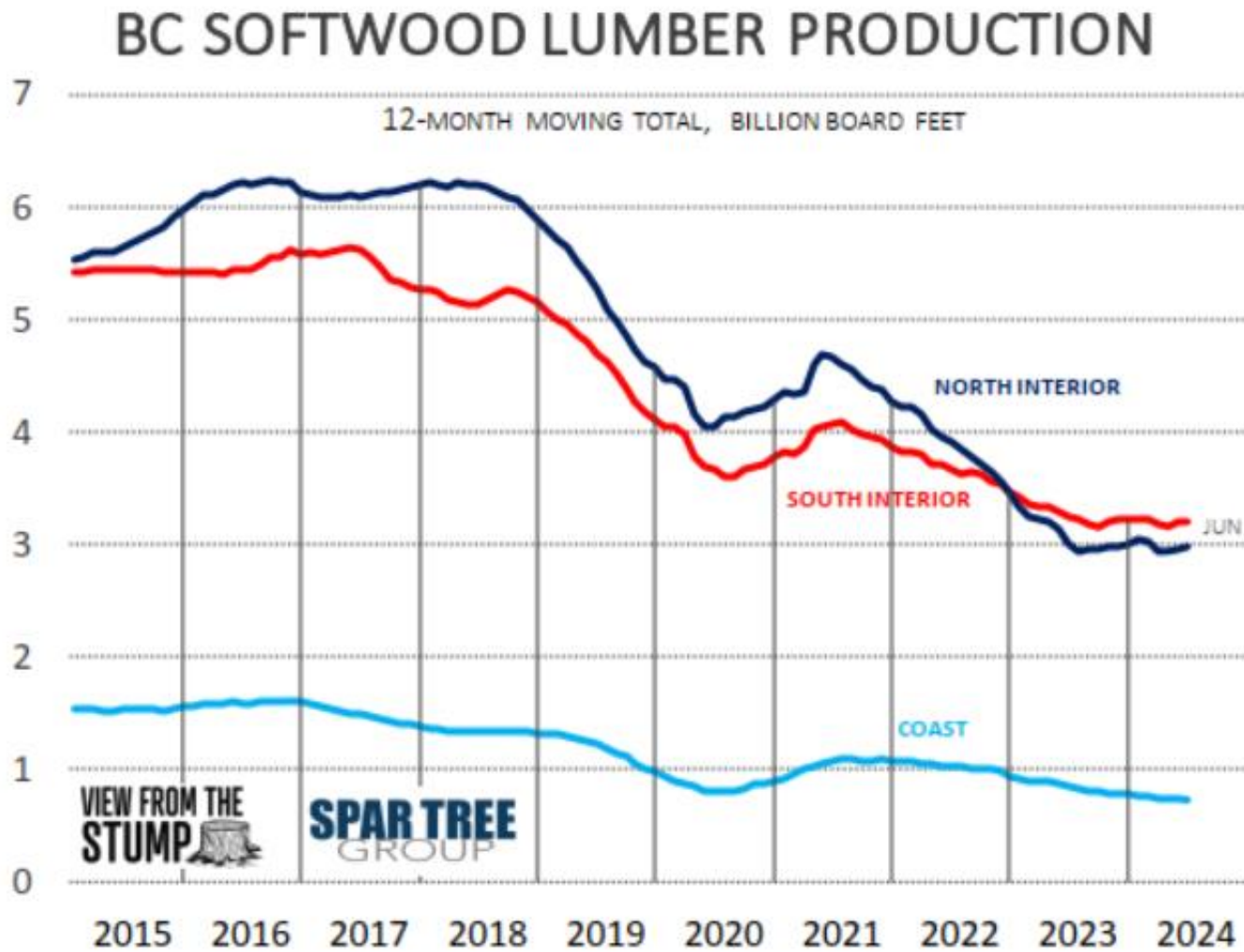
2017



2021



IMPACTS



SOURCE: STATSCAN, SPAR TREE GROUP

5 Billion board ft Reduction in Lumber Production Since 2017

Opportunity

- Active Forest Management
 - Restoring Ecosystem Resilience
 - Realizing the Resource Potential
 - Climate Change Mitigation
 - Enhancing multiple use opportunities
- Indigenous Reconciliation
- Area Based Tenure

There Are Numerous Opportunities that Require ACTION

Current State of “Managed” Stands - Interior

Second Growth Stands up to 50 years of age (most 15-30 in the Interior)

Silviculture regimes designed for Clearcut at CAI (80-120 years)

Tending is almost Nil in second growth forests

Regionally **diverse range of young stands** across the Province

- Broad stocking standards accepted in licensee obligations
- Lacking inventory data on young stands
- Worse in TSA's than TFL's



Current State “Managed” Stands - Interior



Forestry is a Sustainable and Renewable Resource



- Between Barkerville & Quesnel
- SBS BEC Zone
- Areas of Pli / Sx / Fdi
- Site Index >20
- 40 Minutes to Quesnel

NEXT →

Forestry is a Sustainable and Renewable Resource!

1984



2000



Commercial Thinning Opportunity!

2021



A Case for Actively Managed Forests

- Addressing The Effects of Fire Deficit



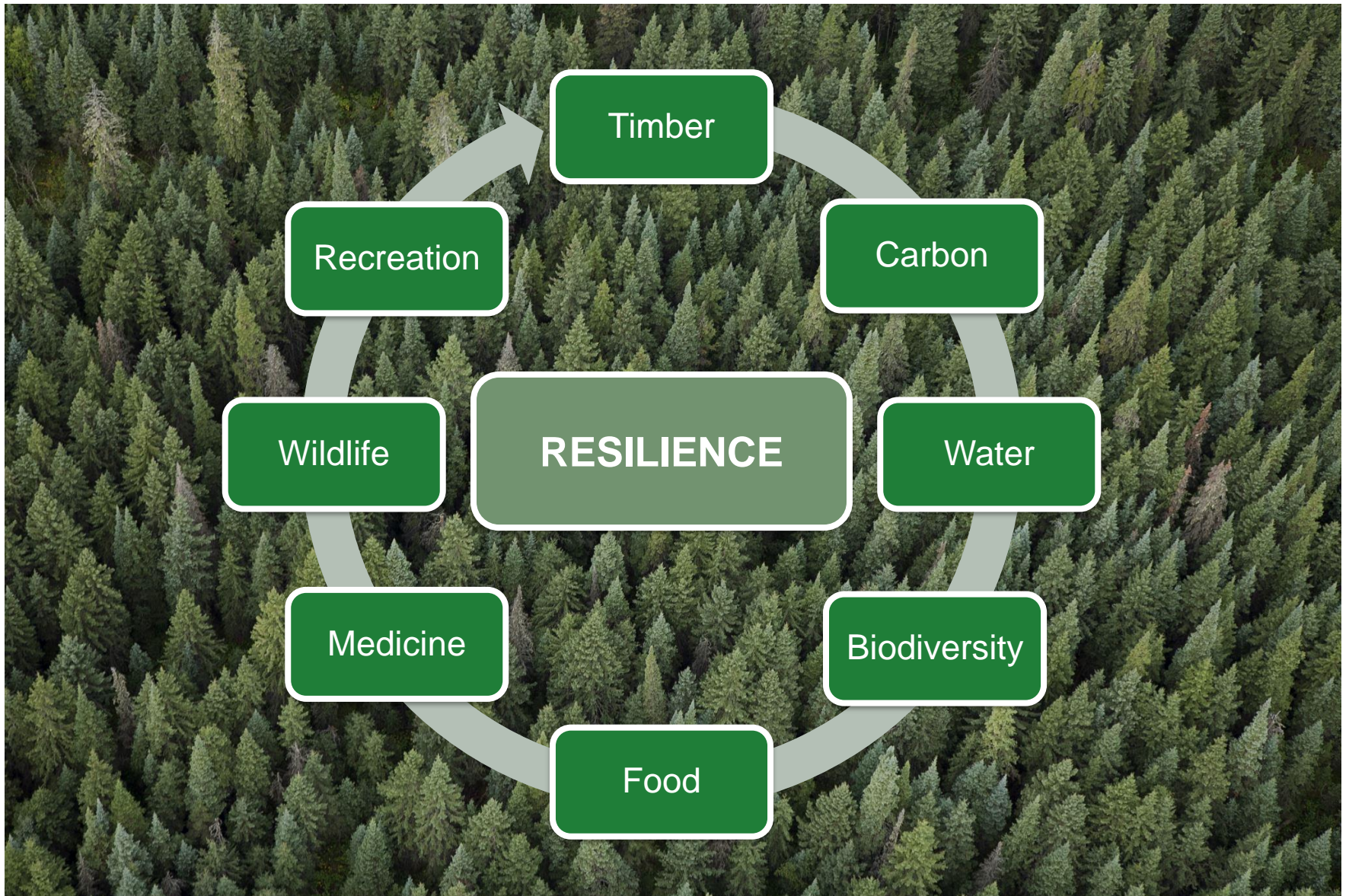
The Era of Partial Cutting has Arrived

- More Advanced Silviculture & Harvesting Systems
- Supports multiple priorities of Forest Management
 - Restoring Resilience
 - Biodiversity
 - Short-term fibre supply
 - Multiple Values Management
 - CCF?
- Pivoting to Commercial Thinning Regimes in Managed Forests
 - Mainly Stands <45 yrs
 - Source of sawlogs and Biologs
 - Mid-term economic timber supply
 - Preserve long-term timber supply
 - Advance Technical Rotation
 - Multiple Values Management



Forest Resilience = Foundation to Community and Economic Resilience

Supporting First Nation's Opportunities



We can get here – A sustainable mix of diverse and healthy forests

