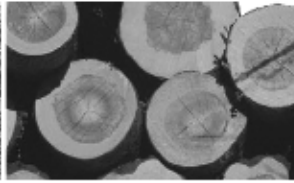




THE WOODLAND ALMANAC



www.woodlot.bc.ca

Spring 2012

Getting Answers to the \$2 Million Question!

An update on the WPDC Business Planning project

IN THIS ISSUE

- 3 GENERAL MANAGER'S REPORT
- 4 INTERIOR TIMBER PRICING
- 5 COASTAL TIMBER PRICING
- 6 MINISTER'S AWARDS OF EXCELLENCE
- 7 25TH & 15TH ANNIVERSARY AGMs
PEACE COUNTRY: BACK TO OUR
FUTURE (EST. 1988)
- 8 SCHOLARSHIP AWARD APPLICATION
- 10 FBCWA 2012-2013 PRIORITIES
- 11 NOTICES
- 12 FBCWA WORK PLAN & BUDGET
- 14 LINKS OF INTEREST
- 15 ROD KRIMMER'S WOODLOT
- 16 MY TWO CENTS WORTH
- 18 COMOX VALLEY TOURIST INFO CENTRE
- 19 LETTER TO THE EDITOR
- 20 **NEW FEATURE!**
WOODLOTTER'S TRICKS OF THE TRADE
- 20 COUNCIL DIRECTORSHIP VACANCIES
- 21 NATURAL RESOURCE ROAD ACT
- 22 MFLNRO GOV'T NOTICE BOARD
- 24 THANK YOUS

By Mike Larock, Chairman, WPDC Business Planning Project Working Group

First, I want to thank the almost 100 members who've offered constructive feedback and ideas on various aspects of the plan we're working on—your thoughts

are always welcome and are appreciated. The Woodlot Product Development Council (WPDC) has reached out to all woodlots in such a significant way only a few times in the past, the most momentous being the creation of the WPDC as a means to fund work to benefit all woodlots in BC. The Next Level of Success project is similar in weight to our origin, and we've been rewarded with great input: thank you.

To recap, the WPDC is currently collecting ideas and developing options for how the WPDC levy could be used to support woodlot licensees to enhance woodlot revenues and reduce costs. We are trying to put before you, some of the important



Value-Added Sort on W1479

information so that you can make an informed decision about how we should continue to build the funding reserve and in what areas woodlots require assistance

now. The woodlot community desire is to ensure that the Federation of BC Woodlot Associations is, and will continue to be, the central vehicle for delivery and progress of woodlot work. Information from the Next Level Project will assist our collective understanding of woodlot needs as well as promote your ideas to the forefront.

Members' ideas for assistance are wide-ranging, and include proposals for financing of woodlots for younger people, marketing collaboration and business financing—and we've also received requests to keep things as they are, develop regional funding strategies, use a small amount of money to lever substantial supporting funds from

con't on page 11



www.woodlot.bc.ca

FEDERATION OF BC WOODLOT ASSOCIATIONS

Contact: Brian McNaughton, General Manager • 381 Pheasant Rd., Williams Lake, BC, V2G 5A9

Tel: (250) 398-7646 • Toll-free: 1-866-345-8733 • E-mail: gen_manager@woodlot.bc.ca • www.woodlot.bc.ca

FBCWA EXECUTIVE

President..... Mark Clark, Prince George..... markclarkrpf@shaw.ca
 Past President Cliff Manning, Vanderhoof cmfs44@hotmail.com
 Vice President..... Shawn Flynn, Nanoose Bay flynnes@shaw.ca
 Treasurer Nancy Pezel, Qualicum Beach..... islandswest@shaw.ca
 Secretary Lisa Marak, Kelowna lmarak@telus.net
 Director..... John Massier, Quesnel..... jmassier@xplornet.com
 Director..... George Delisle, Westbridge..... ldcamp@img.net
 Director..... Tom Bradley, Winlaw tomb@netidea.com
 Director..... Miles Fuller, Burns Lake milesf@telus.net
 Director..... Wolfram Wollenheit, Merville mail@econ.ca

LAND BASED INVESTMENT FUND CONTRACT ADMINISTRATOR

Nancy Pezel, Qualicum Beach islandswest@shaw.ca

E-FM CONTRACTORS

Coleen McLean-Marlow, Quadra Island..... cmarlow@oberon.ark.ca
 Tom Bradley, Winlaw..... tomb@netidea.com

FBCWA PORTFOLIOS

Timber Pricing: Miles Fuller (Chair), Blain Arnett (Interior), Ed Hughes (Coast); Legislation, Regulations & Policy: Mark Clark; Agroforestry: Vacant; National/External Affairs: Cliff Manning; Woodlot AAC Support: Mike Bandstra; FBCWA Business: Nancy Pezel, Mark Clark; Communications and Public Relations: Lisa Marak; Safety: Rick Biller; Strategic Planning: Lisa Marak

WPDC EXECUTIVE

President..... Denise English, Golden dlenglish@davincibb.net
 Vice President..... Mike Larock, Courtenay mlarock@shaw.ca
 Treasurer Ken Pedersen, Prince George pedersenpg@shaw.ca
 Director, North Steven Wright, Houston tutshi1@hughes.net
 Director, Peace..... Jim Collins, Fort St. John beef300_828@hotmail.com
 Director, South David Zirnhelt, Big Lake Ranch davidzirnhelt@hotmail.com
 Director, South Ken Devick, Kamloops kenrdevick@yahoo.ca
 MFR Advisor Dave Haley, Victoria..... N/A

WPDC PORTFOLIOS

Almanac, Annual Report & Calendar: Jim Collins; Annual General Meeting: Denise English, Jim Collins; Contract Management: Denise English, Mike Larock; FBCWA Liaison: Denise English; Financial Management: Ken Pedersen; Nominations/Succession: Mike Larock; R & D Project Proposals: Steven Wright; Questionnaire: David Zirnhelt, Mike Larock, Denise English; Research / Business Plan: David Zirnhelt, Mike Larock, Denise English, John Massier, Shawn Flynn; Strategic Plan: Vacant; Woodlot Stewardship Recognition: David Zirnhelt

FBCWA DIRECTORS

Boundary: G. Dore
 Bulkley: J. Baker
 Cariboo: R. Blake
 Clearwater: W. MacLennan
 Columbia: B. Amies
 East Kootenay: T. Quirk
 Fraser Valley: R. Biller
 Kamloops & District:..... N. Fennell
 Kispixox: B. Larson
 Lillooet: Vacant
 Mackenzie: B. Sinclair
 Nadina District: C. Paulson
 North Island: W. Wollenheit
 Peace River: J. Beale
 Prince George: M. Clark
 Quesnel:..... P. Galliazzo
 Robson Canoe: N. Lorenz
 Sea to Sky: W. Tewinkel
 Shuswap/Okanagan: F. Newhouse
 South Cariboo: B. Hadden
 South Island: S. Flynn
 Stuart/Nechako: D. Toll
 R. Hamilton
 West Kootenay: T. Bradley

WOODLOT PRODUCT DEVELOPMENT COUNCIL • THE WOODLAND ALMANAC

Coordinator: Cathy McClary • Tel: (250) 961-0271 • E-mail: cjmcclary@shaw.ca • Publication # 40035578

Legislation, Regulations & Acts: Setting the Stage

by Brian McNaughton

By the time you read this report, I expect the legislation allowing the withdrawal of private land from a woodlot licence will have been enacted and the supporting policy and guidelines distributed. This is an important piece of legislation that will help woodlot licensees with their estate planning and providing for their families. The Federation thanks Minister Thomson for his understanding of this issue and championing this legislative change.

The latest on the Open Burning Smoke Control Regulation is that the Ministry of Environment hired a consultant to talk to various organizations about their specific concerns regarding the proposed regulatory changes. In short, the Federation's response was that it supports the need to reduce the impact of smoke emissions on people, but that the proposed practices and requirements currently being proposed are not affordable or practical for small tenure holders. Some alternative practices, reflective of the small-scale nature of most WL operations, were presented. The next step will be to review the consultant's



Brian McNaughton,
General Manager

report when its available and then decide what further work, if any, needs to be done.

Government is fast tracking the development of a new Natural Resource Act which will

establish common requirements and responsibilities regarding construction, maintenance and use for all resource sectors; e.g. forestry, mining, oil & gas, ranching, recreation, etc. For more information, there is a separate article elsewhere in this edition of the Almanac.

Just a reminder, if you haven't already, please check the status of your free growing obligations and make sure you're in compliance. There was a bulletin in the last Almanac on this topic. Please read it. Issues involving NSR have been in the news lately so there's no doubt the Ministry is going to remain vigilant in ensuring licensees meet their obligations.

If you haven't already, check out

www.woodsourcebc.com - especially if you have some wood to sell or are looking to buy. It's FREE! This is the internet marketing mall that was designed specifically to meet the needs of small tenure holders. In other words, it's your website and better yet - it's working.

On February 18 & 19, the directors met at beautiful Tower Ranch. Thanks to all who made the trek to Kelowna for the meeting. It was a jammed packed agenda. The directors established the Federation's priorities for 2012/13 then developed the work plan and budget. The revised priorities are posted elsewhere in the Almanac.

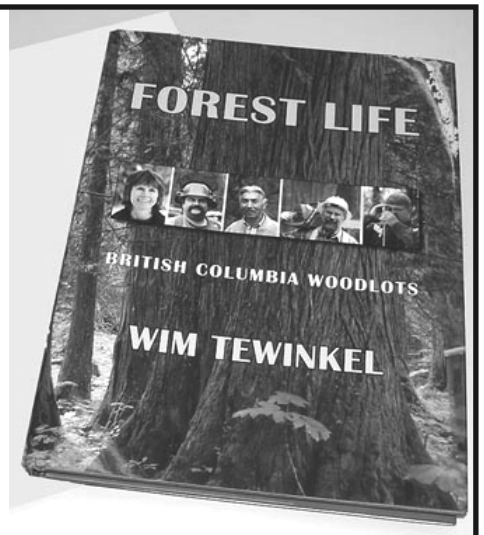
Planning for this year's AGM in Fort St. John is well underway. It promises to be a great event. I hope you're making plans to attend - and not just because of the meeting. If you haven't been to the Peace country, then you don't know what you've been missing. It's big, wild, spectacular scenery in places, lots of wildlife, and the people are friendly and hospitable. I think you will find it's well worth the trip. ♦

"Forest Life" makes a great gift

Are you looking for a great gift idea? Look no further! Forest Life: British Columbia Woodlots by Wim Tewinkel showcases and celebrates BC's woodlots, woodlot licensees, and their families.

Through beautiful photos and a few words, this book captures the seasonal beauty of coastal and interior woodlots and portrays the landscapes and diversity of our forests as well as the stewardship of those who manage them.

You can order it from www.woodlot.bc.ca for only \$39.95, or woodlot licensees can buy it from their woodlot associations for only \$20.00 ♦



Tab Rate Changes & Cut Control Volumes

by Blain Arnett

A very productive and energized directors meeting was held in Kelowna on Feb 18 and 19. Your Federation is a dedicated group of people working on your behalf to try and improve woodlot management, make positive change to policy, and to minimize spending by Council and the Federation. I was able to meet with a number of directors to discuss stumpage and timber pricing issues. As a licensee, it is important to bring forward any issues to your association. Your representatives will make sure the Federation and Ministry of Forests hear your concerns.



Blain Arnett,
Interior Timber Pricing
Coordinator

Boundary, Columbia, Headwaters, Kamloops, Kootenay Lake, Okanagan Shuswap and Rocky Mountain Forest Districts.

South West Zone

-100 Mile House, Cascades, Central Cariboo and Chilcoltin Forest Districts.

If you have a Tab Rate cutting permit your

stumpage is fixed until July 31, 2012, and will be redetermined on August 1, 2012 with a new rate. If you are applying for a new permit you will have the rates noted in the manual at the time of approval.

If you have a MPS permit with an ERAA there are rate determination changes under consideration; contact me for more information.

Please be aware of how your five year cut control volume is determined. Cut control volume is based on the stratum your wood went into at the purchasing sawmill. The sawmill's stratum weight conversion, species composition, and grades may be very different from your estimates and weigh scale samples of your loads. Your wood is a small part of the population (number of loads) that make up all the wood in a stratum. Wood from many different blocks and areas may be part of the stratum population. For example you don't have Hemlock on your woodlot yet your scale invoices show two percent Hemlock, that's because your wood is part of the larger population that makes up the data in the stratum. Someone else sent in the Hemlock.

High conversions are now common as a result of beetle killed pine drying out on the stump. Weight conversions you may have normally used to estimate logged volumes are no longer reliable. When you are

ready to start logging make sure to check with the mill for current strata conversion rates. Check to make sure your loads are scaled into a stratum that most closely represents your species composition.

Use caution if you want to purposely exceed 100% of your AAC cut control, you are allowed up to 120% without penalty. I recommend a target lower than 100% of your cut until you are sure of the final strata conversions. While a 20% buffer has usually allowed room for error, it now may not be enough.

Just this winter a woodlot licensee who diligently tried to stay within cut control is now facing a double stumpage penalty for going over 120% of his allowed cut. This person logged green spruce and balsam that had a normal conversion rate based on mill sample loads. Unfortunately the wood went into a stratum that had a very high m3 to tonnes conversion rate due to dry pine in the stratum. The high conversion rate artificially caused the amount of volume logged to increase from what was actually logged. The stratum conversion is what will be used for cut control, not the sample loads or cruise estimates. The licensee was trying to log only 100% of his cut but went over the 120% allowance due to situations beyond his control. I will be meeting with the licensee and the District Manager to see what can be done and try to provide some assistance to the licensee.

If you have any questions or comments, I can be reached at 250-964-4105 or at greggcreek@shaw.ca. Remember while it is noteworthy that lumber exports to China have surpassed US lumber exports this past year, it is because we are shipping lower volumes to the US. ♦

4

Effective November 1, 2011 the Tab Rates in Table 6-2 by forest zone are (\$/m3):

North Central: 0.81 Balsam, 1.60 Fir, 0.84 Pine, 0.96 Spruce

North East: 0.26 Balsam, 0.46 Pine, 0.73 Spruce

North West: 0.30 Balsam, 0.25 Cedar, 0.25 Hw, 0.77 Pine, 0.58 Spruce

South East: 0.86 Bal, 1.40 Cw, 1.15 Fd, 1.00 Hw, 1.25 Lw, 0.92 Pl, 1.02 Sw

South West: 0.86 Bal, 1.87 Cw, 1.09 Fd, 0.82 Hw, 1.29 Lw, 0.86 Pl, 0.79 Sw

Each of the forest zones include the following forest districts:

North Central Zone – Ft. St. James, Mackenzie, Nadina, Prince George, Quesnel and Vanderhoof Forest Districts.

North East Zone - Ft. Nelson and Peace Forest Districts.

North West Zone - Kalum and Stikine Forest Districts.

South East Zone - Arrow

Tab Rates, MPS and US Free Trade Extensions

by Ed Hughes

The Coastal Stumpage issues that might impact the rates that Woodlot Licensee's pay now and in the future, are being monitored through a variety of committees and contacts. Since the last report, the Tabular Rates (TAB) rate table for 2012/2013 has been finalised, the 2006 Canada-US Softwood Lumber Agreement has been extended and the Coastal Appraisal Manual (CAM) has been updated. Coastal Woodlots will continue to have similar stumpage rates for 2012, as were charged in 2011.

Some of the Coastal stumpage highlights are noted as follows:

Tabular Stumpage 2012/2013

The TAB rates for Coastal Woodlot Licensee's for 2012/2013 are noted in the Table below. These rates are similar to last year.

Zone	Stumpage rate by species/m3						
	Balsam	Hemlock	Cedar	Cypress	Fir	Spruce	Other
North Coast	.25	.31	.25	.25	.25	.45	.31
South Coast	.44	.35	.74	.59	.46	.25	.46

Market Pricing Equation – No change since the last report

The Market Pricing System (MPS) Technical Subcommittee meetings have not been held nor are planned to discuss the potential for a new MPS stumpage equation formula. The FBCWA continues to hold a seat on the committee. I will keep up to date with any changes to the MPS formula, but for now, no increases in stumpage rates due to changes in the MPS formula will occur this year.

Extension to the US Free trade agreement

The 2006 Canada-US Softwood Lumber agreement has been extended until October 2015. The extension to the



Ed Hughes,
Coastal Timber Pricing
Coordinator

agreement will reduce the risk of any significant changes to the MPS system and formula. The extension though does not mean that rates will not change or adjustments to the Coastal Appraisal Manual will not be implemented.

Periodic changes to the CAM and MPS formula can and will still be considered by government. Where there is a need to improve the statistical accuracy of Tenure Obligation Adjustments and the MPS formula, they will be discussed with the Coast Timber Pricing Advisory Committee prior to implementation. Following the normal consultation process updates can still occur. Saying this though, the Market Pricing System will continue to be in place until Oct 2015 (or longer), so large scale changes are less likely to occur.

Coastal Timber Pricing Advisory Committee

The CTPAC has been reviewing the CAM updates and other appraisal issues. The committee is comprised of MOLFR

and large company executives. The FBCWA continues to have a seat on the CPAC.

Communications Regarding Coastal/Interior Timber Pricing Issues

Blain Arnett and I continue to communicate on a monthly basis and when the need arises between the Coast and Interior portfolios. Contact with Timber Pricing Branch continues so that a working relationship is maintained with Government staff.

New Appraisal Issues – Continuous communication

The Coastal Timber Pricing portfolio provides assistance to Woodlot Licensees upon request. If you have any concerns or issues I can be reached at 778-424-6129 or by email at ehughes2@shaw.ca. ♦

Alistair Schroff and Earl Ingram celebrate the Ministers Award for Excellence in Woodlot Management

by Sara Grady

“Woodlot licenses are a social contract. There are obligations that come with those rights.” (Alistair Schroff)

When presenting Alistair Schroff and Earl Ingram with the **Minister’s Award for Excellence in Woodlot Management**, Minister of Forests, Lands and Natural Resource Operations Steve Thompson gave strong words of praise and identified Schroff as “an invaluable resource to the Ministry in his 13 years of woodlot operations”. Schroff and his father-in-law were the recipients of both the Northern Region and overall Provincial awards - which recognize the exemplary practices of licensees.

Consistent with his genuine desire to give back to his community, the entire cash award of \$3500 was given to local charities - the Lakes Animal Friendship Society and the Southside Seniors Housing Society. It is this willingness to share that makes this Burns Lake native such a valuable member of the Woodlot community, as well.

The requirements for a successful award application involve three criteria: Improved Site Productivity, Improved Utilization and Increased Administrative Efficiency. Schroff and Ingram demonstrated excellence in all 3 areas. Through creating one of the 1st 10 year Forest Development Plans in the Nadina District, Schroff greatly reduced the workload and amount of paperwork for himself and the Ministry by harvesting four five-year cut control periods without amendment. Similarly, he streamlined the process for the administration of beetle kill and blowdown salvage openings, reducing the time both he and the Ministry would usually require for tracking and reporting.

Schroff, a UBC Forestry graduate and Registered Professional Forester, has also taken steps to improve site

productivity that benefit not only the business, but the environment as well. The woodlot has significant plantings of Class A (genetically-modified) spruce and pine; a more expensive alternative to Class B stock, these plantings are expected to be healthier and greatly increase yields at the end of the line. Schroff also introduced Douglas fir into his planting stock, a variety that will better adapt to anticipated changes in climate in years to come.



Earl Ingram Salvage Logging



*Alistair Schroff
Hybrid SX Plantation*

Licensees are obligated to replant harvested areas, with a few exceptions such as very small opening created by blowdown or areas which are the ministry’s responsibility. Schroff has taken this obligation one step further, re-planting even these areas which are technically exempt. He’s made significant efforts to rehabilitate access roads once logging is complete, despite the fact that rules

allow for a proportion of permanent roads to remain unplanted after harvest. In an area known for its lush rolling forests and pristine fishing lakes, maintaining a healthy ‘looking’ woodlot is just as important as running a productive and profitable one.

Schroff demonstrated many examples of improved utilization as well. Poor grade logs were marketed which would normally end up in a slash pile, salvage operations were conducted to minimize future losses and trees disturbed by roads, landings and skid trails were made use of.

Schroff devotes incredible energy and effort into the development of better practices, and shares his knowledge with fellow licensees and members of the community:

as a past-President of the Nadina Woodlot Association; an instructor for aspiring professional foresters at the College of New Caledonia; as a host of field tours for residents and young students; as the author of instructional manuals for woodlot licensees. Schroff and his family demonstrate a dedication to the essence of the woodlot program, setting an excellent example for their peers and a positive image in the public eye. ♦



PEACE COUNTRY: BACK TO OUR FUTURE (EST. 1988)

In 1988, the inaugural meeting of the Federation of British Columbia Woodlot Associations took place in Fort St. John.

Ten years later the Peace River Woodlot Association hosted the 11th Annual General Meeting which was also the 1st inaugural meeting of the Woodlot Product Development Council.

**YOU ARE INVITED TO JOIN IN THE CELEBRATIONS OF THE
25TH ANNIVERSARY OF THE FBCWA
AND THE 15TH ANNIVERSARY OF THE WPDC
ON SEPTEMBER 13-15TH, 2012 BACK WHERE IT ALL BEGAN,
FORT ST. JOHN**

Come take part in a trap shooting competition, learn how to do elk bugling, climb on board for a River Boat tour to the Site C dam, search for dinosaur bones, and join the locals in a country hoedown complete with a buffalo BBQ.

Fort St. John is known as the Energetic City, which reflects not only a large resource base of oil, natural gas, forestry and agriculture, but also the vitality of the residents who are keen to live and work in a community that gives back so much. Fort St. John attracts travelers with wilderness and eco-adventures, as well as hunting and fishing.

Since its beginning in 1794 as a trading post, Fort St. John has grown with opportunities like the completion of the Alaska Highway in 1942 that sparked a population boom and the discovery of high-grade oil in 1951 that set the City's course as British Columbia's Oil and Gas Capital.

They say that once you drink the waters of the Peace you'll never leave! So mark your calendars and come on up. (If you are nervous about staying forever, we'll make sure we have plenty of suds that include more than water to drink!)

A registration package will be included in the Summer issue of the Almanac.

For more information visit www.woodlot.bc.ca



Federation of B.C. Woodlot Associations Scholarship Award

Information and Application Form

RULES & REGULATIONS

1. Applications for this award must be received on or before April 27, 2012. Late applications will not be considered.
2. Applicants must be a direct family member of a woodlot licensee or private land owner who is a member of the local Woodlot Association and/or the FBCWA. In cases where the woodlot is not owned by an individual, one applicant per woodlot is eligible to apply in any given year.
3. Applicants must be planning to attend a post secondary institution within 24 months of the application deadline.
4. Preference will be given to students in grade 12 and recent high school graduates.
5. Preference will be given to students entering a forestry-related program. Students entering other areas of study are welcome to apply, knowing there is preference for forestry related study.
6. The award of \$1,000.00 will be payable, on receipt by the FBCWA of documentation confirming registration into the institution for post secondary education. This generally occurs in mid September.
7. Essays and photos from applicants, particularly the successful applicant, may be printed in the Almanac.
8. The decision of the Awards Committee is final.
9. The Award Committee of the Federation of B. C. Woodlot Associations will be empowered to:
 - a) grant this award at its discretion;
 - b) withhold this award in any year if there are no eligible applicants, or for any reason deemed good or advisable.

8

IMPORTANT

Incomplete or late applications will not be considered. Please complete the application form and attach:

1. a letter describing the reasons which you feel qualify you for this award. Your letter should also include a detailed description of your experience in forestry, particularly on woodlots. Your letter may include information about your various interests and extra curricular activities.
2. a one page (approximately 500- 700 word) type-written essay titled "Apart from selling logs, what other economic/business opportunities do you see coming from a woodlot?". This is an open ended topic so you can decide how to approach it.
3. two letters of reference from previous or current teachers or employers,
4. a copy of your *most recent* report card, and
5. a recent photo of yourself.

Return to: Federation of B.C. Woodlot Associations
Attention: Nancy Pezel, Treasurer
173 W. Hoylake Road,
Qualicum Beach, British Columbia V9K 1K3

Or send it digitally to islandswest@shaw.ca with a subject heading of FBCWA Scholarship Application

Applications must be received by April 27, 2012



Scholarship Award Application Form

Name: _____

Address: _____

Telephone: _____

EDUCATIONAL INFORMATION:

Currently enrolled in: _____

Post Secondary School you plan to attend: _____

Program you will be registered in for 2012-13: _____

Relationship to Woodlot Licensee or to private land owner for Woodlot # (ie; daughter of Joe Smith, Woodlot #2345)

Woodlot Licensee/Private Land Owner to whom you are a direct family member, has been a member of the which woodlot association and for how many years?

Please include information on volunteer work, extra curricular activities, membership in school and community organizations, sports, interests, hobbies etc as well as employment information. (You may use another sheet if you need more room or if it's more convenient for you.)

FBCWA 2012/2013 Priorities

(as determined by the FBCWA Directors in Kelowna, February 18, 2012)

10

<u>ACTIVELY BEING MANAGED</u>	<u>ACTIONED AS TIME PERMITS</u>	<u>MAINTENANCE MODE</u> ...being monitored
Safety	e-FM (systems issues)	Include incr. silv. in WLPPR
Economic Development	Stumpage Tab Rates, Annual Rent, ERAA settlement & Land rent	Group Health/Affinity - CILA
Revise Vision & Strategy to reflect FBCWA & WPDC working together	Tax Reforms	Woodworkers Lien Act
Natural Resource Road Act	BRIDGES (WoodSourceBC)	Provincial Trails Strategy
Association Building	Undercut carry forward	WL Surrender
Private Land Withdrawal	Catastrophic Events	
One Cutting Permit	MFR Communications with WL licensees	Migratory Birds Convention Act
Free Growing Declarations	Agro-forestry Initiative	Commercial Forest Reserves
WL Program Expansion, WLs 4 young people, WL surrender, WL sub-dividing, AAC	Rewarding volunteer efforts	Aboriginal Recognition & Reconciliation Act
Training Course Freedom to manage - WL risks & responsibilities (e.g. 1 CP)	PL (non Sch. A) fire protection	Receiving Licences
Professional Reliance	Repl. WL document	Silviculture Discussion Paper
Open Burning Smoke Control Regulation	Waste & Residue	Carbon Credits/Protocols
Woodlot 4 Windows AAC support - TIPSYP & VDYP	Fire Prevention/protection	
Seek FFT & other program funding	Capital gains wrt WL sales & transfers – Almanac notice	
Resolutions		
Land Based Investment Program & other program funding		
Integrated Vegetation Mgmt Plan template		

government funding partners.

This work is challenging, but the WPDC board of directors takes its duty seriously to reach out to all woodlots and discuss our financial asset. The plan will analyze and compare practical options, and ways to “lever” your money. Nothing is set in stone at this point, and we won’t make decisions until after the 2012 AGM in consultation with the FBCWA and an opportunity provided to collaborate with you.

We’ve completed or started the following since December:

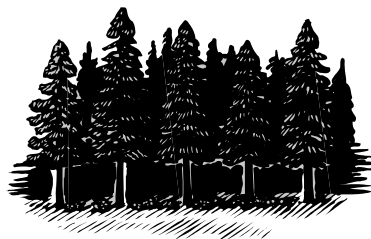
1. To get a better feel for what’s happening on the ground, we obtained referrals from FBCWA directors to almost 100 licensees who have developed revenue streams beyond sawlogs, and interviewed most of them,
2. We’re researching the best examples we can find of how woodlot associations from North America and Europe have successfully supported their members,
3. To understand how much of the levy reserve may be available for new services—if any—scenarios are being developed for levy receipts over the next five years, taking into account AAC reductions due to the pine beetle and other factors,
4. Three regional discussion groups are being organized for late March and April to get initial feedback on the draft plan, (this is in draft form and may change) and

5. To improve communication with FBCWA directors, we’ve expanded our project Working Group to include FBCWA executive members John Massier and Shawn Flynn.

A key feedback step is ahead: we’re asking each local woodlot association to hold a meeting to review a rough draft of the plan. That draft should be ready in April, and I hope that you’ll participate. In May, we will incorporate all of the feedback we’ve received into a final draft. Then we’ll seek a consensus with FBCWA directors on what course of action to take, and send every licensee in BC the final draft with the summer Almanac, along with recommendations.

Further feedback is welcomed. The key point of contact for feedback is Cathy McClary, the WPDC Coordinator. However, you can also email me, our new President Denise English and/or other WPDC directors. (See the inside page of the Almanac for email addresses and telephone numbers.)

Thanks to all of you for your help. Almost 20 years ago the leadership of our woodlot community pursued a way for us to achieve common goals for woodlots: the two-bit promise must continue to support all woodlots and FBCWA. ♦



NOTICES:

- BC’s Forest Community Launches online Wood Market Place: www.WoodSourceBC.com is a free marketing tool designed to help BCCFA members, woodlot licensees, First Nations, private forest landowners, re-manufacturers and others to access up to date information on the availability of wood products within BC’s forest communities. This website will provide buyers and sellers the ability to market themselves to a wider network of BC’s wood users. The creation of this website was guided by input from 140 forest community members at 12 community meetings across the province.
- WorkSafeBC has established new safety standards for resource roads which appears to be Safety Management System for resource roads. For information: http://www.worksafebc.com/publications/health_and_safety/by_topic/resource_road_safety/default.asp
- Council elects new President: Denise English from Golden BC and welcomes Ken Devick from Kamloops back on Council as a Director. Council thanks outgoing President Chris Elden of Quesnel for his contributions to Council.
- SISCO Winter Workshop will be held in Salmon Arm on April 2-4, 2012. For more information check out their website <http://www.siscobc.com/> ♦

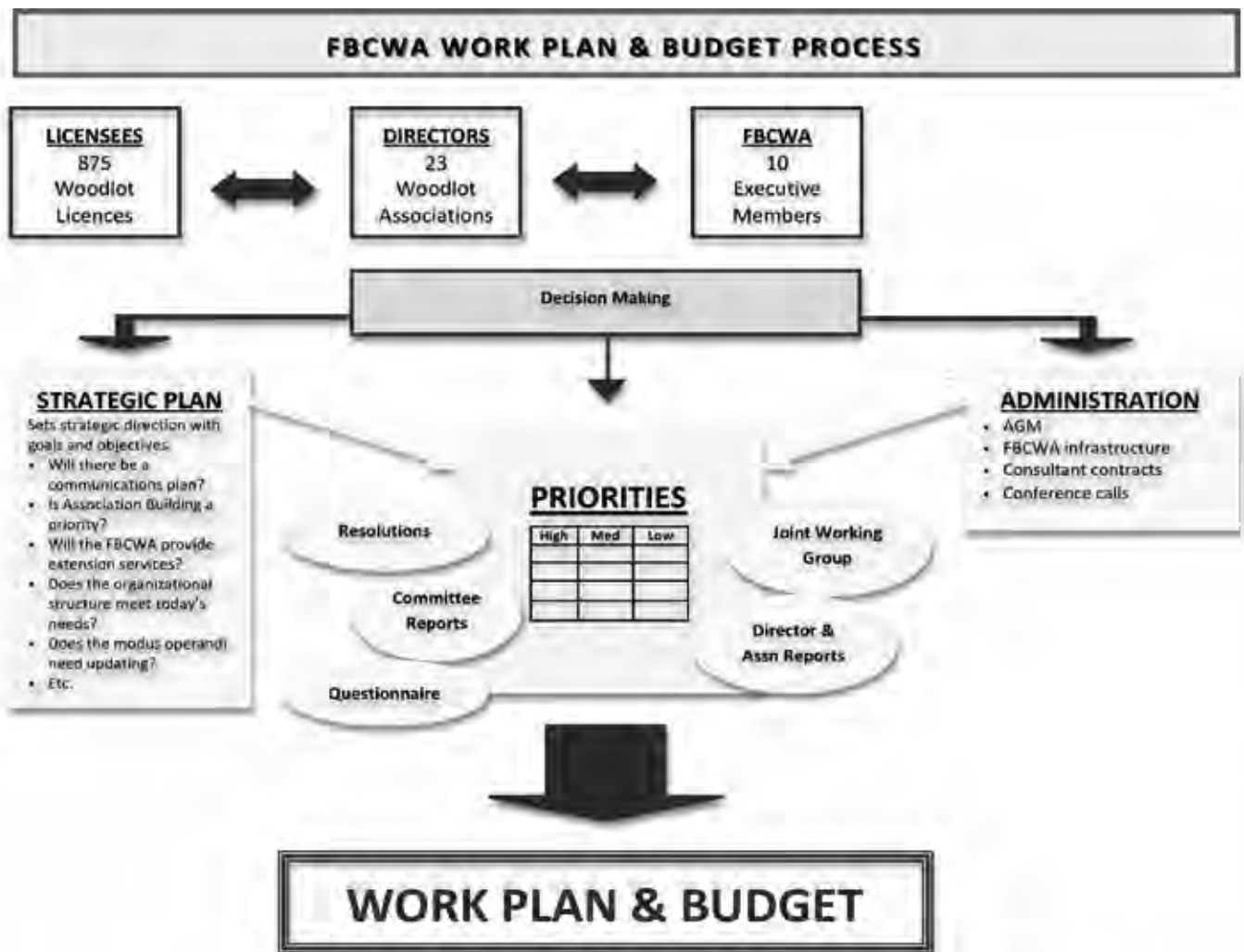
FBCWA Work Plan & Budget Process

In February the FBCWA and WPDC directors met in Kelowna. At that meeting the budget and work plan for the next fiscal year starting on April 1, 2012 was determined along with establishing the priorities for the upcoming work load. (See following page for the approved work plan and page 10 for the 2012 Priority listings.)

The flow chart below illustrates how these priorities are determined and demonstrates the impact that individual woodlot licensees can have when ideas are shared with Association directors.

Priorities are based on input from licensees, directors and the FBCWA Executive. This input, together with Resolutions from the AGM, and initiatives arising from the Joint MFLNRO/FBCWA Working Group were reviewed, discussed and provided a direct influence on the budget & work plan.

The Directors of the FBCWA and the WPDC are all volunteers who are working very hard on your behalf as a woodlot licensee.



FBCWA/WPDC 2012/2013 Workplan

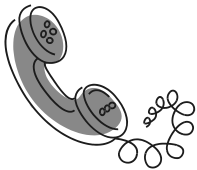
(approved February 18, 2012)

Portfolio	Activity item	Budget \$	Contact	Comments
FBCWA BUSINESS		\$143,100		
	FBCWA Accounting	\$2,000	Nancy Pezel	Review of FBCWA books will be done in 2012
	FBCWA Exec Travel	6,500	Nancy Pezel	For President & Executive travel/expenses not associated with committees.
	Teleconference Port line charges	4,500	Mark Clark	15 conference calls/year with Telus
	FBCWA/WPDC Insurance	3,100	Nancy Pezel	For directors insurance not covered by LBIP
	FBCWA Directors Expenses	12,000	Mark Clark/Nancy Pezel	Expenses are based on 1 director from each association to attend the directors budget meeting in Feb/March. Local woodlot associations are expected to pay for their directors to attend the AGM.
	GM Professional Fees	90,000	Mark Clark	Professional fees based on 15 days/month x \$500/day
	GM Expenses and Disbursements	15,000	Mark Clark	Expenses of \$12,500 & Disbursements of \$2,500
	Support Contracts	6,000	Mark Clark	Contracts for e-business (\$4,000), LBIP/FBCWA Communication (\$1,000) and Non-committed Misc (\$1,000) at the discretion of the Exec.
	Integrated Vegetation Management Plan template	4,000	Mark Clark	one time expenditure for 2012
TIMBER PRICING		\$36,000	Miles Fuller	
INTERIOR		\$18,000		
	Interior Professional Fees	15,000	Miles Fuller	Professional fees based on 2.5 days/month x \$500/day
	Interior Consulting Expenses	3,000	Miles Fuller	Expenses for FBCWA travel (flights, accommodation, mileage, meals, taxis) and office supplies.
COAST		18,000		
	Coastal Professional Fees	15,000	Miles Fuller	Professional fees based on 2.5 days/month x \$500/day
	Coastal Consulting Expenses	3,000	Miles Fuller	Expenses for FBCWA travel (flights, accommodation, mileage, meals, taxis) and office supplies.
WOODLOT AAC SUPPORT		\$4,500	Mark Clark	Woodlot for Windows program telephone support. (Mike Bandstra)
W4W updating - VDYP & TIPSYP		\$40,000	Mark Clark	One time expenditure in 2012
NATIONAL / EXTERNAL AFFAIRS		\$3,650	Cliff Manning	
	CFWO dues	1,500		Annual dues
	CFWO AGM	2,150		Travel expenses to attend AGM
COMMUNICATIONS & PUBLIC RELATIONS		\$51,500	Lisa Marak	
	Press Releases	\$500		4 releases/year
	Tree Frog sponsorship	\$500		Sponsorship for forestry news service
	Profiles & Expenses	3,000		Profiles for 1 area of province
	Woodlot Connector	5,000		Design, writing & distribution of 6 electronic issues
	Promotional Materials	3,000		Education DVD/Carabineers/bookmarks, etc.
	Education Program	2,000		Updates, materials and promotion
	Trade Shows	1,500		Registration Fees & Expenses
	Communications Coordinator Fees	16,000		Fees to complete communication activities 4 days/month x \$320/day + expenses
	Shipping & postage	500		
	Special Projects	2,000		Funding to cover special events & projects
	Website updating & maintenace	10,000	Cathy McClary	
	Woodlot Report	7,500		publishing & Distribution of revised WL 2008 report
ANNUAL GENERAL MEETING		\$14,000	Cathy McClary	
	AGM grant	\$3,000	Cathy McClary	Grant requested by local host association.
	AGM Coordinator Fees	5,000	Mark Clark	To assist AGM committee with planning
	AGM Travel Expenses	6,000	Nancy Pezel	For FBCWA Executive Directors and/or smaller associations who request financial help prior to their directors' attending the AGM.
SAFETY		\$7,500	Rick Biller	Travel & expenses for representing the FBCWA on Forest Safety Council (1000); Safe certification document distribution (\$4,000) and telephone support for new safety program (2500)
STRATEGIC PLANNING		\$1,000	Lisa Marak	5 Year review of the Strategic Plan due
FBCWA BASE BUDGET		\$301,250		

■ Workplan continued ...

FBCWA CONTINGENCY RESERVE (15%)	\$45,000		To cover initiatives approved by the FBCWA exec (eg. Stumpage Annual Rent Model, MPS Analysis, WoodSource BC, NRRRA, FG declarations, Policy committee, etc.)
FBCWA TOTAL	\$346,250		
WOODLOT PRODUCT DEVELOPMENT COUNCIL			
Directors' Expenses	18,000	Denise English	Includes 2 Council meetings per year, AGM registration, teleconferences for 7 Directors.
Accountant	5,000	Ken Pedersen	Professional fees for annual review of accounts and monthly bookkeeping updates.
Coordinator Professional fees	35,000	Denise English	Professional fees based on 9.1 days/month x \$320/day
Coordinator Expenses	5,000	Denise English	Expenses includes travel, communication expenses, AGM planning and office supplies.
Questionnaire	1,000		For the production & mailing of 860 questionnaires.
Annual Report	1,000	Ken Pedersen	Production and distribution of joint annual report by request to licensees and 100 copies to AGM.
Woodland Almanac	14,000	Ken Pedersen	Expenses for the production and distribution of 1275 copies, 4 times a year.
Woodlot Stewardship Recognition Program	4,500	David Zirnhelt	Costs to recognize woodlot licensees such as video profiles, AGM registrations, local events.
Strategic plan 2012-2017	10,000	Denise English	Collaborative effort with FBCWA to create both plans.
WPDC TOTAL	\$93,500		
PRODUCT DEVELOPMENT PROPOSALS	\$25,000	Mike Larock / David Zirnhelt	Funding for Next Level project plus approved projects submitted by associations or woodlot licensees.
TOTAL EXPENSES	\$464,750		

14



Telephone Support for using the Woodlot for Windows AAC program is available to all woodlot licensees or their representatives.

Contact Mike Bandstra

ph: 250-847-4822 fax: 888-273-0209 email: mbandstra@forsite.ca ♦



Links of Interest

- 1 & 3 Month Coast & Interior Log Market Reports: <http://www.for.gov.bc.ca/hva/logreports.htm>
- For daily scans of news from BC, Canada, the US and around the world focusing on Forestry, Forest Products & Business, Climate Change, Carbon & Bioenergy and Wood products and Green Building http://www.treefrogcreative.ca/Daily_Forestry_News.html
- **Buy BCwild** is an annual directory of BC Businesses that offer natural and wild products and services. It is published by the Centre for Non Timber Resources at Royal Roads University. For more information : www.BuyBCwild.com
- Three silviculture committees around BC offer workshops and field trips several times a year that may be of interest to woodlot licensees. For more information check out the one closest to you. North: <http://nsc-bc.org>; Southern Interior: <http://www.siscobc.com/>; and Coast: <http://www.coastalsilviculturecommittee.com/> ♦

■ Working at Rod Krimmer's Woodlot

Restored historic Big Lake Ranch school house on Woodlot 0550.



Spruce sawlogs sorted for a specialty mill in Horsefly.



Logging close to home on Schedule A lands of W0550.



Doing what woodlot licensees do best: Rod Krimmer at work on his woodlot.



Off to the mill and wait for payday!



Trucker extraordinaire: John Johnstone



My two cents worth: a licensee's opinion

Editor's comment: This article was submitted as feedback to the Next Level of Success document. Council has heard a broad range of ideas from ~100 woodlot licensees and is compiling all feedback to be presented in an Options Report this summer. If you have an idea you'd like to share please contact Cathy McClary 250-961-0271 or cjmclclary401@gmail.com

By Fred Newhouse

SUGGESTION TO WOODLOT PRODUCT DEVELOPMENT COUNCIL:

Two birds with one stone

Spending money in these times seems contradictory but the Federation of B.C. Woodlots has a vision and the following is a suggestion on how to implement that vision.

16 “The Federation of BC Woodlot Associations [FBCWA] promotes the economic and social interests of woodlot licensees, private forest landowners and others involved in small-scale forest management in British Columbia. The FBCWA's mission is for all its members to practice exemplary forest and natural resources management in a socially, economically and environmentally responsible manner.”

The economic and social interests are in need of promotion right now. Perceptions could go south fast due to problems with the data entry system. Never licensee friendly, the lack of correct input has resulted in unreported work. This tends to paint the program in a bad light even though most of the noncompliance is with not reporting the work done.

The result is a conundrum, we may be doing an exemplary job but there is no way to tell based on the government information site, RESULTS. This is

the first bird, information management and the lack thereof.

The second bird is the economic and social interests that need promoting. No one doubts the social good resulting from the small tenure but no one has a solution to the problem small scale has with efficiencies. We live in an optimizing environment today. This is the outcome of an industrial era that rewards the big, and has a philosophy (belief system) that says big is better. I have no problem with this philosophy but I do think that the strength of the woodlot program is to allow all philosophies and belief systems to be played out in the forest.

Take a look at the current forestry debates for example. We are caught up in a battle between two models. At one end is the anthropomorphic approach, ego centric with man in the middle, versus the eco centric where nature is in the centre. I like to think that the value of the woodlot program is that all belief systems are honoured. This is probably our greatest value to the people of B.C., in our actions a spirit is expressed that reflects individualism. A kind of built in diversity generator unlikely to be found in our current obsession with collaborative approaches.

How do we promote small scale when the perception is that licensees not only have to be bigger but that they need multiple licenses to break even.

The one stone I suggest evolves from a perspective on the modern world. The paradigm shift currently embracing the world is the shift from the industrial framework to the information age. Just look at Apple, Microsoft, Google and Facebook if you have doubts. Information is more valuable than any hard object.

On the timber side of things, the value of information on diversity, complexity, carbon offsets etc. is greater than many of our hard objects such as, timber. With the cost of harvesting and trucking ever increasing, the day is fast approaching when forests will be worth more as standing timber than cut.

Again there's debate here on which model achieves the most carbon credits. These debates are good but recognize the underlying message relay. We are not going back to the industrial era, we are evolving towards the information era. Whether you're a climate denier or an earth firster, the message is clear, by the time our plantations mature there will be a whole new set of challenges to deal with. This is why the woodlot licence is so important. (The eco-centric model is well expressed by Dr. Jim Pojar at <http://ltabc.ca/docs/New%20Climate%20for%20Conservation.pdf> . The egocentric or anthropomorphic can be found at http://www.woodlot.bc.ca/PDF/Mason_BCWoodlot.

FBCWA Vision

Woodlot holders/owners will participate in a healthy and diverse forest industry with woodlot licenses and private forest lands, making significant contributions to local communities and providing a sustainable supply of forest products.

The FBCWA will have a voice in forest and economic policy.

BC's woodlots will be models of forest management excellence, and world-renowned for their social, economic, recreational, cultural, and educational contributions to rural communities. ♦

pdf and is a presentation from Larry Mason at our 2008 AGM. These publications express the two sides of our current debate.)

The woodlot license offers a diverse approach from multiple managers. This cannot be easily replicated by the board room or by a collaborative community approach. What makes the small scale forest tenure valuable are the diversity of beliefs and the subsequent diversity and structural complexity that shows up in the forest. The stone we need to cast at our two birds is our own story, our experience and the expression of these as information from our data.

Suggestion: We collect our own data now but the data entry is where things fall apart. Why not collate our own data, take ownership of quality and feed the chief forester what he needs. This will cost money and require extension.

The suggestion here is that we just don't stop there but determine the extra information requirements to meet REDD+ (California, one of our Carbon partners has an approach on REDD+ worth reading. Good explanation on cap and trade, <<http://redd-plus.com/drupal/california-climate-change-AB32-and-redd-plus-carbon-markets>>) and possibly TEEB (<<http://www.teebweb.org/Home/tabid/924/Default.aspx>>) The carbon credits from REDD+ and

environmental goods and services from TEEB may just pay for the extra information gathered as well as the data collators and extension.

I have read on the internet that pilot programs for REDD+ in the tropical forests have used locals. The result was lower costs and equal quality compared with researchers. This leads me to suggest that as licensees many of us could collect the data and spend less on the pro's from Dover attached to many carbon credit programs.

There are several advantages to this suggestion and the main one is owning the information. If it is becoming valuable now, just think of the future values, information on Ecological Goods and Services will become the next big thing and woodlots would be the leading edge. If promoting woodlots and private land is our vision then this suggestion is one way of accomplishing our aims while of course dealing with the two birds.

NEXT STEPS : If this suggestion hits a green light, the next steps would be to seek government and chief foresters support on this. If the light stays green then flesh out the proposal and work out the strategies required.

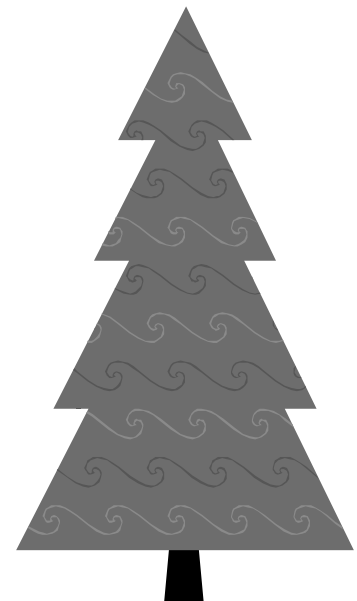
As Paven Sukhdev explains at this ted talk carbon credits come in different colours. <http://www.ted.com/talks/pavan_sukhdev_what_s_the_price_of_nature.html> ♦



Woodlot Licensees are invited to apply for the Minister's Awards of Excellence for Woodlot Management

associated with site productivity gains, improved utilization and administrative streamlining.

A woodlot licensee may be nominated by a woodlot association, another licensee, an individual, Ministry staff or the Federation. Annually one woodlot licensee from the Coast, Southern and Northern Interior Regions will be recognized and awarded \$2500.00. The application deadline is December 31. For more information: www.woodlot.bc.ca (Min Award). ♦



NIWA's contribution to the new Tourist Information Centre in the Comox Valley

by Harold Macy

The North Island Woodlot Association was one of the many community groups contributing to the new Tourist Information Centre for the Comox Valley.

Several displays depicted the major resource industries in the area: agriculture, forestry and fisheries. Also represented were recreational and cultural activities available. The building itself utilizes natural materials and green technology.

NIWA members and Woodlot Licensees Wolfram Wollenheit, Mike Larock and Harold Macy gave input into the design of the displays as well as providing “woody” material to give a taste of the forest. Logs from a variety of species were erected and labelled to show the diversity and strength of our local woodlots. Thanks to Lisa Marak, FBCWA Communications Coordinator, for her help with the display material. ♦



Construction of the new Tourist Information Centre in the Comox Valley



Opening Reception for the new Tourist information Centre in the Comox Valley



Mike Larock at the opening of the Comox Valley Tourist Information Centre

Letter to the Editor

Dear Editor;

I'm Mad as Heck about a couple of things upon reading the last couple of issues of the Almanac - several things Jump out at me!

Firstly, I see a resolution (#8) to hire a consultant to give us WL dummies a report card on our abilities (or lack thereof) based on info in RESULTS. How come we have to hire a consultant every time we want a fix? Hiring consultants- F (Fail)

I suggest the resolution should have been worded to give the Ministry the report card from a Free and Volunteer survey by Licensees on various issues such as the "user- Unfriendly" nature (to the average License) of RESULTS- eg. bceid #'s/results reporting-they change/disappear overtime/won't accept data entries as per my latest attempts by consultant #1/MOF staff are little help/ I've had to hire consultant #2 to facilitate the first (still awaiting a resolution-is somebody afraid I might sell this stuff to the Russians?) The computer programmers – F (Fail)

Neither Licensees or their contractors, want to waste wood in these lean (or any) market times. If we estimate (and report) our residues to be within the benchmarks, then that should be good enough. Heavens sake! We are encouraged to leave coarse woody debris and there are even minimum requirements for this. No sign-off here! Professional reporting- F (Fail)

And Firewood of all things! Many licensees have opportunities/initiative

to produce/market a product from otherwise waste wood while the MOF want their share. They will charge us about \$12 stumpage for say 35 Kgs. Govt. could save a ton of \$ if they let up a bit! (The cost to produce/record/bill us for these types of transactions far outweighs any potential revenue loss). Revenue Branch- F (Fail)

Somebody who deserves a huge vote of gratitude for his due diligence in explaining the Beast called "RESULTS" and his volunteerism in listening to our concerns, has immense WOODLOT FERVOUR, and capacity to understand the convolutions of these NEW times is Tom Bradley – A++ Outstanding Tom !

As per Dave Haley's comment that the numbers do not show good performance by licensees, I suggest that somebody finally tell Dave our best kept secret -"it's not all about the numbers". Many of us fell into the Map Trap as Tom explained and others ended up with incomplete/incorrect data fields of info when Ministry staff did the reporting for us. The ministry even hired consultants for about 2 years to fix the problem. Maybe we will never come to the end of this issue?or a good inventory could fix?

The vast majority of Woodlot Licensees did not apply to get a woodlot to report 'stuff'-we want to do Good things on our Woodlots. Many of us have grown older and wiser having lived on/worked in our forested holdings and hopefully have experienced a few fruits for our labour (you have had to LIVE it to know the feeling).

Woodlot Licensees are a bit like elephants I like to think. We are in for the long term and through years of experience and the memories that go with them, must endure the bad times with the good to survive. There is a perception out there that " time-is-of-the-essence" does not exist for MOF personnel, that many tinker with the system to prolong/ justify their job and yet are rewarded with dedicated/defined pension plans- in many cases much before they reach that just getting into stride age of 65 like me! Many Licensees have but their personal industry to save them in old age.

In Summary, if the Woodlot Council wants to put Our Licensee \$\$ to work, those \$2.5 million and growing excess funds that sit burning a hole in Councils' pocket, then maybe it's time to pay Licensees a Dividend instead of hiring More consultants to study stuff and produce yet more reports!

In the last month or so, I have heard many good ideas and suggest the one I personally support and like the best: That the Federation request of the Council who controls these funds to pay \$100 annually to WL Associations for each paid-up member licensee and for Associations to refund \$90/year to each member to help pay for All this reporting (or otherwise Govt. inflicted pain) that have been dumped on us poor souls. (Then watch Woodlot Association memberships grow!) Perhaps then, Mr. Haley and we Licensees could be happier chaps!

by George! ♦

New Feature!

Woodlotter's Tricks of the Trade

Submit your ideas on what makes woodlot life easier. Examples could include anything from a handy tool, how you have made something work, or 'How to' tips that you have discovered that you want to share with other woodlot licensees. Specific examples might be suggestions like how you keep that old 30 year chainsaw going, how you extend the life of a power saw chain, how you have adapted that 40 year old piece of equipment to keep on running, etc. Send your ideas to Cathy McClary at cjmclary401@gmail.com or call her at 250-961-0271. The licensee whose idea gets published each issue will receive a FBCWA hat or Shirt.)

20



Council directorship vacancies

The Woodlot Product Development Council is comprised of seven woodlot licensee directors representing the Northern Interior, Southern Interior, Coastal Forest Region and the Peace. The positions are staggered so that vacancies come up every year. In the fall of 2012, 3 Council Director Positions will need to be filled. Council hosts ~10 teleconferences and two meetings per year. Meetings are held in February/March and at the AGM in the fall. Directors are compensated for travel expenses and the AGM registration fee. If you are interested in joining Council please contact any of the Directors or the WPDC Coordinator, Cathy McClary. ♦



Old Whitetail on W0475 recently lost his 5pt headgear.



Evening meal and kickboxing display as viewed from the frogpond on W0475 on the Kettle River. ♦

Purpose of the WPDC

The primary purpose of the WPDC is to ensure that levy fees are spent on woodlot licensee priorities to benefit and promote the woodlot industry throughout BC. Funds are collected through powers granted to Council under the Farming and Fishing Industries Development Act. ♦

Natural Resource Road Act

by Brian McNaughton

Government's objective is to consolidate all resource road legislation (parts of 11 different laws) into a single act – the Natural Resource Road Act (NRRRA). The NRRRA is intended to establish common requirements and responsibilities regarding construction, maintenance and use for all resource sectors (forestry, oil & gas, mining, ranching, recreation, etc.), with due consideration for the public interest and the environment.

According to the discussion paper that was released last year, Government is committed to sound environmental stewardship while improving industrial competitiveness, supporting rural economic sustainability, and reducing the administrative cost borne by taxpayers. Government claims the NRRRA will:

- Streamline administrative processes;
- Clarify and standardize rights, obligations and environmental objectives; and
- Integrate decision-making in way that will provide greater certainty for new and existing businesses.

This is a very complex and challenging piece of legislation to develop. There's an estimated 450,000km of natural resource roads with ~40,000 structures. There are roads & trails, non-status vs. wilderness roads, industry vs. public use, multi-sectoral roads, safety, environmental protection, costs – risks – liabilities, etc. to be considered. As an indicator of how complex this is, consider there are 14 working groups in place dealing with such important topics as what roads will fall under the Act, cost sharing, safety, road standards for construction and maintenance, rights of access (restrictions and closures), etc. There is a Federation representative either sitting on or monitoring each of the working groups. Also, the Federation sits on the Senior Sector Advisory Team – which is a group of various industry representatives that provides some oversight to this project.

To make it even more challenging, government has set an extremely short timeline to get this work done. They have set the Fall 2012 session for this legislation to be passed. Why the rush? The Federation has asked the question but so far, there hasn't been an answer. So if you are wondering why, as licensees, your Association and Federation haven't been talking

with you over this important piece of legislation then the answer is that government has not allowed enough time for that to happen. There hasn't been time to consult with other industry organizations or with First Nations either!

Some of the reasons why the Federation is paying close attention to the NRRRA include:

- To make sure roads on private land don't fall under the NRRRA.
- That government's intent to reduce the cost burden on taxpayers doesn't result in higher cost to Woodlot Licensees.
- That the costs, risks and liabilities associated with building or maintaining a road are fair, reasonable and acceptable to those responsible.
- That the Act stipulate the use of resource roads is 'use at your own risk'
- That the reporting (e-business) requirements are reasonable,
- Etc.

This is a very important piece of legislation that will affect every woodlot licensee in the province. ♦

MEMBER Reflections

The Woodland Almanac is always looking for creative submissions for "Member Reflections" related to small-scale forestry. We'd like to hear from you on stories from the woodlot or see your photos from the block. "Member Reflections" can also be used to share obituaries on licensees who are no longer with us. If you'd like to submit an article or photo, contact Cathy McClary at cjmclary@shaw.ca.

Policy Change Opens Up Options for Woodlot Licensees

March 10, 2012

A regulatory change allowing the removal of private land from a woodlot licence will give woodlot holders more flexibility in how they manage their assets, Minister of Forests, Lands and Natural Resource Operations Steve Thomson announced today.

In fall 2011, an amendment to section 47.1 of the Forest Act was introduced to allow private land to be removed from a woodlot. That change is now in effect.

All potential private land removals will be at the discretion of the minister of forests, lands and natural resource operations (or a delegate determined by the minister) following public consultation. The following requirements must also be met:

- The private land has been part of a woodlot licence for at least 10 years.
- The woodlot holder has provided notification and advertised their intent.
- The licence is in good standing with no overdue payments, no major contraventions of forestry legislation, or outstanding obligations.
- Access to Crown land via existing roads on the private land has been adequately addressed.
- Private land removed from an existing woodlot can't be used by the owners to apply on new woodlot licence opportunities.



BRITISH
COLUMBIA

The Best Place on Earth

MFLNRO OFFICIAL GOVERNMENT NOTICE BOARD

- **Private Land Withdrawal** - New legislation has been passed which now makes it possible for woodlot licensees to get some or all of their private land out of the woodlot licence, yet still keep the licence as it pertains to the crown land (Schedule B) portion. The Ministry news release announcing this change is to the right.

Licensees who are interested in this should read the guidelines. They can be found at: <http://www.for.gov.bc.ca/hth/timber-tenures/woodlots/forms.htm>

- The BC Ministry of Forests, Lands and Natural Resource Operations (MFLNR) is pleased to announce the release of our **Forest Stewardship Action Plan for Climate Change Adaptation**. This action plan is collaboratively led by the MFLNR Resource Stewardship Division and the MFLNR Tenures, Competitiveness and Innovation Division. Its actions are integrated across headquarters branches, regions, and BC Timber Sales (BCTS).

Today's Forest Stewardship Action Plan for Climate Change Adaptation continues our leadership on climate adaptation, and steps into a new era in which the Ministry is integrating adaptation to climate change into business practices. The plan outlines actions the Ministry will undertake to adjust our policies, operations, and decision support tools to adapt to climate change and keep our forests healthy, resilient, and productive. The Action Plan outlines a sound, measured and informed approach to manage the risks to our forests from climate change and to capture the opportunities that arise.

The Action Plan builds on ongoing work, partnerships, and commitment to climate change adaptation in British Columbia's forests. This work began with the Future Forest Ecosystems Initiative (FFEI) in 2005, deepened through the Future Forest Ecosystems Scientific Council projects, and benefits from synergy with partners including industry, universities, the Canada-USA Landscape Conservation Cooperatives, and others. The Action Plan starts with the forest resource and will be expanded to include other resources such as water, land, fish and wildlife habitat, etc. in the future. Where adaptation science and tools such as a drought risk index are available and applicable to your area, we encourage you to use them or try them out. For further information, see *Adapting to Climate Change* on the Chief Forester website, the Competitiveness and Innovation Branch website or contact Kathy.Hopkins@gov.bc.ca at 250-387-2112.

The policy change was requested by the Federation of BC Woodlot Associations. The Union of British Columbia Municipalities was consulted, and helped develop the guidelines for a private land deletion.

Most, but not all, woodlot licences include private land. Some licensees have expressed a desire to diversify their operations and pursue other economic opportunities with their private land such as agriculture and ranching. Others have indicated they want to sell their private land for financial reasons such as retirement planning.

The amount of private land in an individual woodlot varies, ranging from zero hectares up to 1,400 hectares. The average area of private land per individual woodlot is 108 hectares.

Quotes:

Minister of Forests, Lands and Natural Resource Operations Steve Thomson -

“Woodlot holders are not major licensees. They are small-scale operators, who have asked for the flexibility to be able to manage some of their private land independently of the Crown land portions, which with this amendment the government is pleased to provide.”

Federation of BC Woodlot Associations general manager Brian McNaughton -

“As woodlot licensees get older, they require the flexibility to remove some or all of their private land from their woodlots in order to plan their estates and take care of their families. This legislative change gives them the opportunity to do so, but only with the minister’s approval. Each request will be evaluated and decided on its own merits. Any remaining private land, along with the Crown land portion of the woodlot licence area, will continue to be managed sustainably under the woodlot licence agreement. This change in legislation is good for the forests and good for the licensees who manage the forests.”

Quick Facts:

- Woodlot licences are small, area-based tenures that combine private land with Crown land. They are

managed by individuals, families, small groups or First Nations.

- There are 866 woodlots across the province, covering about 592,000 hectares. Private land comprises about 16 per cent of the total area.
- Woodlots are replaceable tenures, usually awarded for an initial term of 20 years.
- Woodlots generate jobs in planning, harvesting, road construction and maintenance, reforestation, silviculture and small-scale timber processing.

Learn More:

Link to the policy around private land deletions:

<http://www.for.gov.bc.ca/hth/timber-tenures/woodlots/forms.htm> ♦



Future woodworkers: Students from Port Alberni honing their skills while visiting W1479

The FBCWA has a number of items that would make great gifts for Friends, Family, Contractors and others. Items in stock include screen-printed logo on T-shirts and coffee mugs, embroidered FBCWA logo on golf shirts, oilskin ball caps and knitted toques. Order through the WPDC coordinator, Cathy McClary. ♦

S-100A Annual Safety Refresher Course / Online

Corporate & Individual Registration

Visit our official website at:

www.firesafetraining.com

250-372-0097 or Toll Free 1-800-372-0244

WHMIS is Also Available Through Our Website
Recognized, 2 Day S-100 Courses Available

Woodlot 1050 For Sale
Located at 14 km A road, James Mountain
40 km south of Quesnel;
Current AAC of 450m3.
For more info contact: carterfamily07@gmail.com or call 250-297-0102



Dunkley
LUMBER LTD.

DIRECT LINE: (250) 998-4215
BUS.: (250) 998-4421
RES.: (250) 747-3595
CELL.: (250) 961-3100

DOUG NELSON
Log Buyer/Wood Supervisor

P.O. BOX 173
FAX: (250) 998-4558
EMAIL: dnelson@dunkleylumber.com

PRINCE GEORGE, B.C.
CANADA V2L 4S1

Advertising Rates

As a service to FBCWA members, the Woodland Almanac will make space available for non-commercial ads, free of charge. Commercial advertising space is also offered to enterprises at the following rates:

Business card.....	\$50	Quarter page	\$135
Half page.....	\$175	Full page.	\$250

There is a 10% discount for ads appearing in two or more issues. A complementary annual subscription is mailed to all advertisers.



Thank you
to our contributors for this issue

- | | |
|--------------|------------------|
| Blain Arnett | Rod Krimmer |
| George Dore | Mike Larock |
| Shawn Flynn | Harold Macy |
| Sara Grady | Brian McNaughton |
| Ed Hughes | Fred Newhouse |

Please note:
The opinions expressed in the Almanac do not necessarily reflect those of the Federation, the Council, or their members.



No matter how long the winter, spring is sure to follow. ~Proverb



FEDERATION OF BC WOODLOT ASSOCIATIONS
381 Pheasant Road • Williams Lake, BC, V2G 5A9
Tel: (250) 398-7646 • Toll-free: 1-866-345-8733
Fax: (250) 398-7642 • E-mail: gen_manager@woodlot.bc.ca
www.woodlot.bc.ca

WOODLOT PRODUCT DEVELOPMENT COUNCIL
THE WOODLAND ALMANAC
Tel: (250) 961-0271
E-mail: cjmclary@shaw.ca